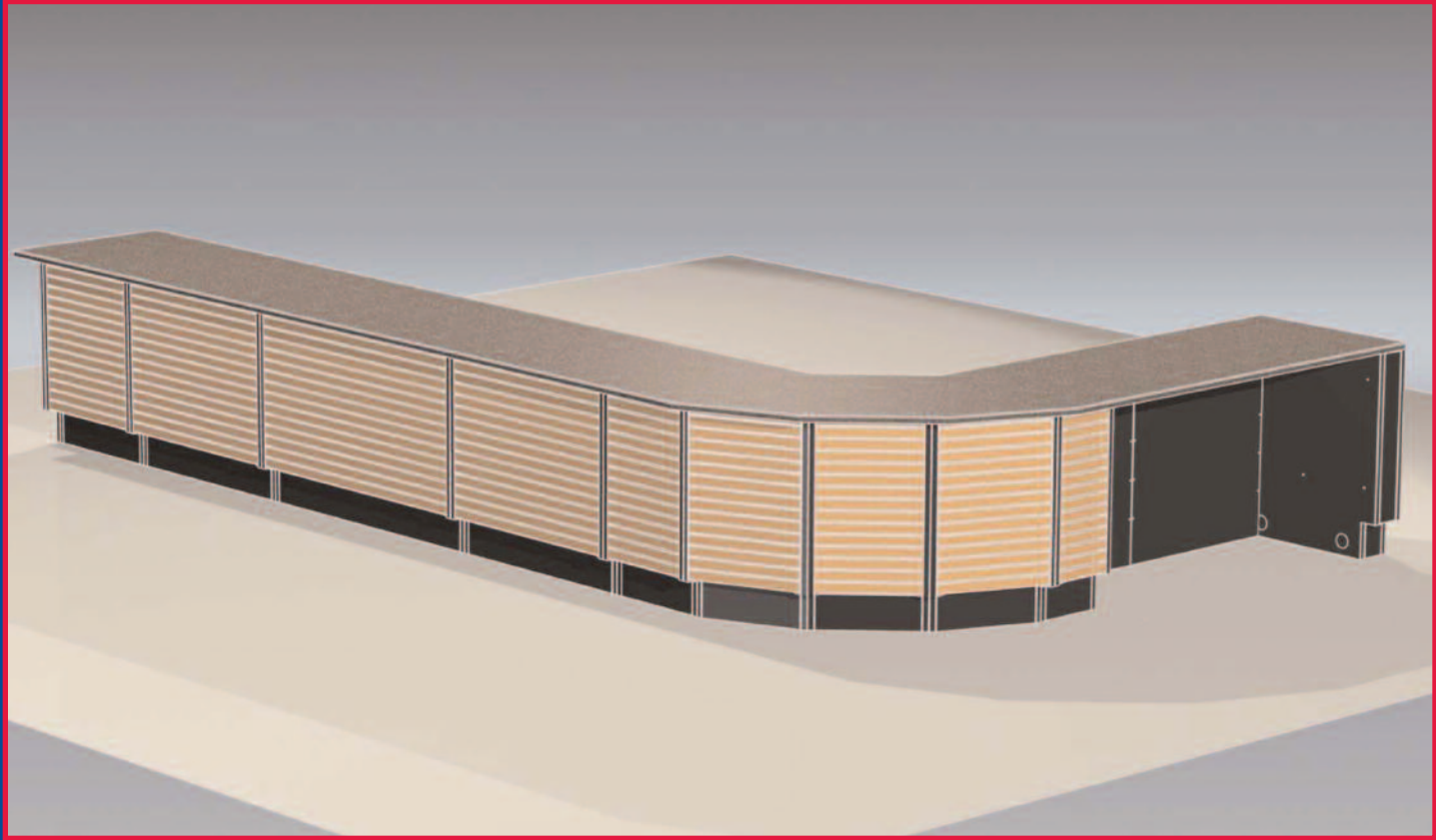


SHOP-FLEX

METAL CABINET SYSTEM



SHOPCO U.S.A. Inc.
7171 W. Sam Houston Parkway North
Houston, Texas 77040
Telephone: 713/934-2900
Fax: 713/934-2929
Toll Free: 888/874-6726
Internet: www.shopcousa.com





INTRODUCTION

For over two decades SHOPCO U.S.A., INC. has been working with retail channels to provide the most versatile, durable and aesthetically pleasing interior store fixtures. If you are looking for a fixture-supply partner that will take the time to understand your business needs, and form a relationship far beyond the sale itself, then SHOPCO is the company of choice; whether it is a c-store, QSR, travel plaza, campus store or other select retail. With that said, we would like to take this opportunity to introduce the next generation of cabinets from SHOPCO — **The SHOP-FLEX Metal Cabinet System.**

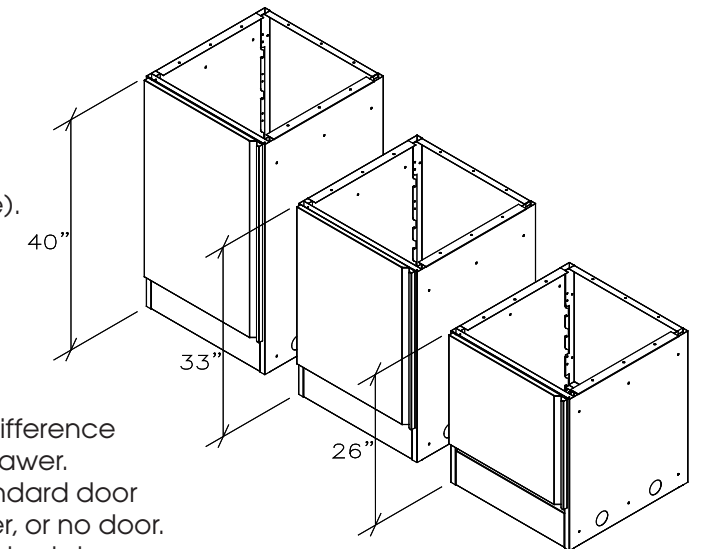
The SHOP-FLEX Cabinet is constructed of SAE 1010 steel. Our team specially designed this cabinet to be as flexible as possible. Our concept was to have a cabinet with the durability of steel, combined with the economy and modern look of wood fronts with customized countertops. **Now, you have a choice!**

The SHOP-FLEX Cabinets are great for many purposes such as:

- Sales Counters
- Shop-In-Shop Kiosk Counters
- Reception Desk
- Rear Storage Counters
- Warehouse Counters

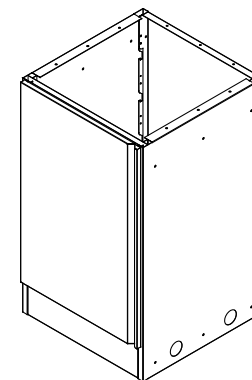
SHOP-FLEX sizes:

Three Heights (Cabinet Body Heights - 26", 33" and 40" which includes an integral 6" base). Total overall heights with a 1" thick top are 27", 34" and 41".

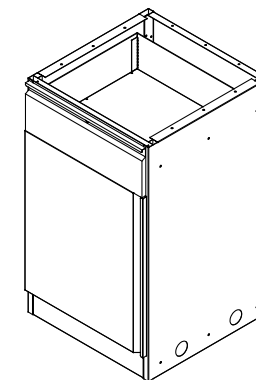


Height Versatility

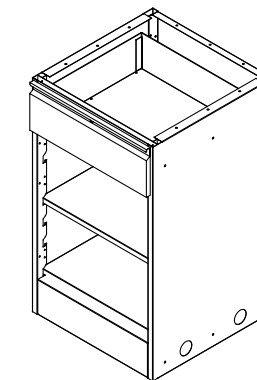
The heights are designed so that the incremental difference between each height is equal to the height of a drawer. Therefore a standard height unit can include a standard door (on the attendant side), or a low door plus a drawer, or no door. Similarly, a tall unit could have a tall door, or a standard door plus one drawer, or a low door plus two drawers.



Tall Unit with Tall Door



Tall Unit with One Drawer and Standard Door



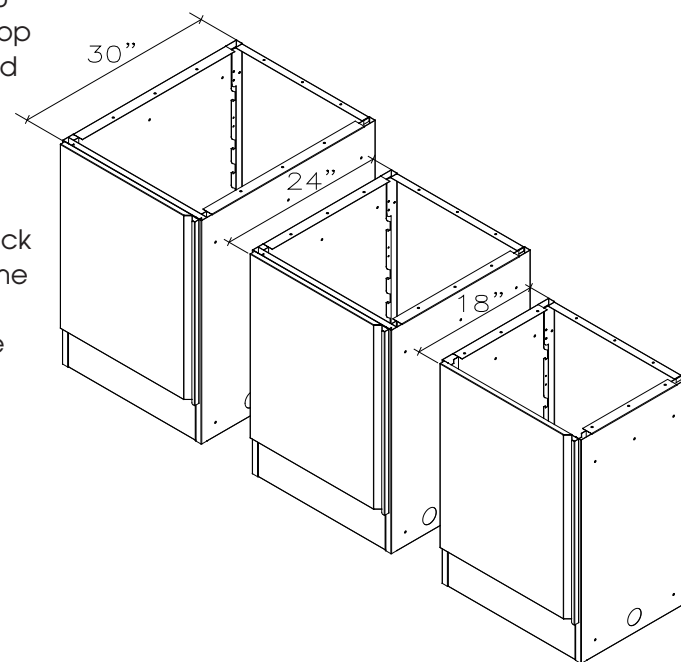
Tall unit with Drawer and Open below



SHOP-FLEX Metal Cabinet System

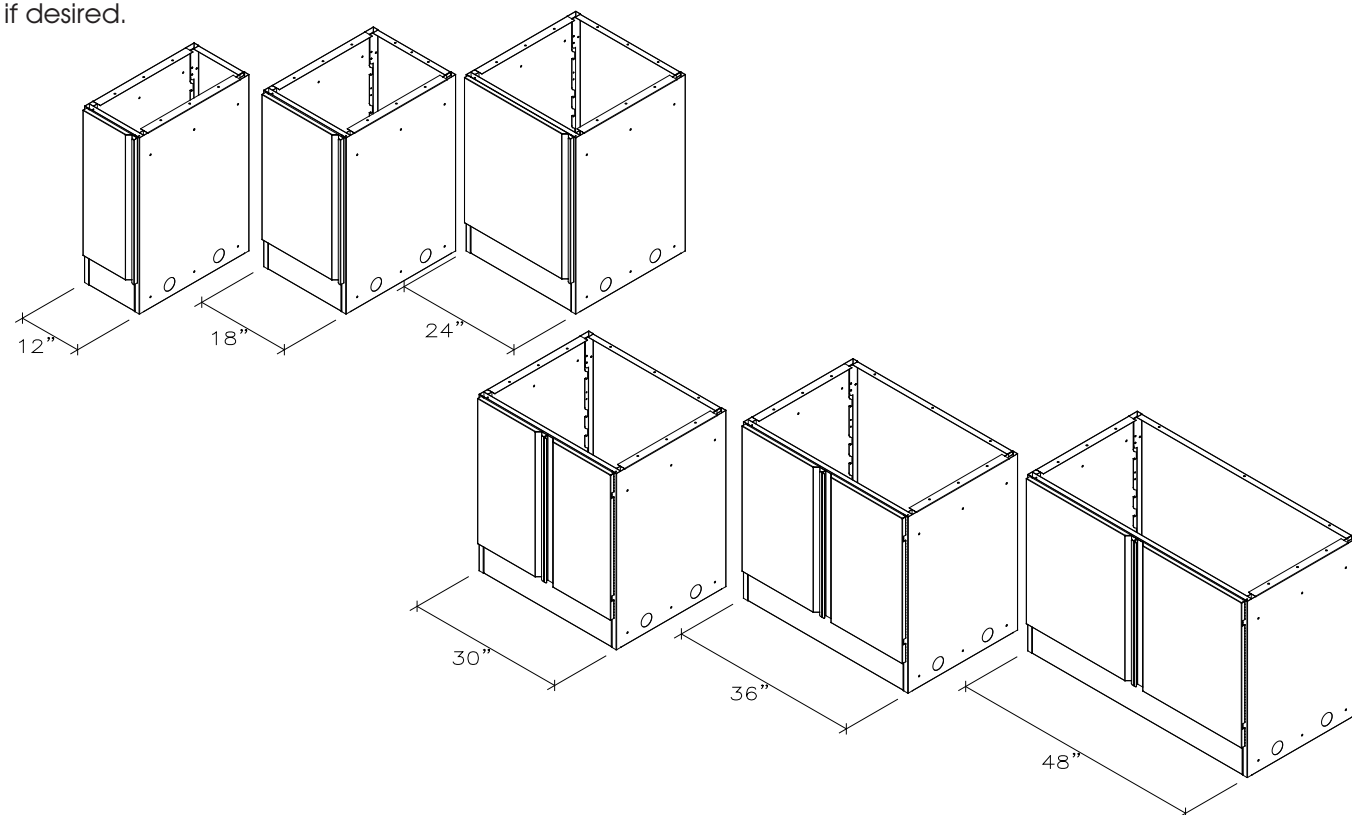
Three Depths Cabinet body depths 18", 24" and 30" which can be combined with a deeper counter top to provide an electric and plumbing chase. To yield overall depths of 18" with no chase to 36" with 6" chase for wall applications.

For sales counter applications, the counter top typically has a 1" overhang in the front and the back for a depth 2" greater than the cabinet body. Some sales counter applications utilize an extended top at the pay points on the front of the counter to the depth of the merchandising shelving.



SHOP-FLEX Cabinet Lengths

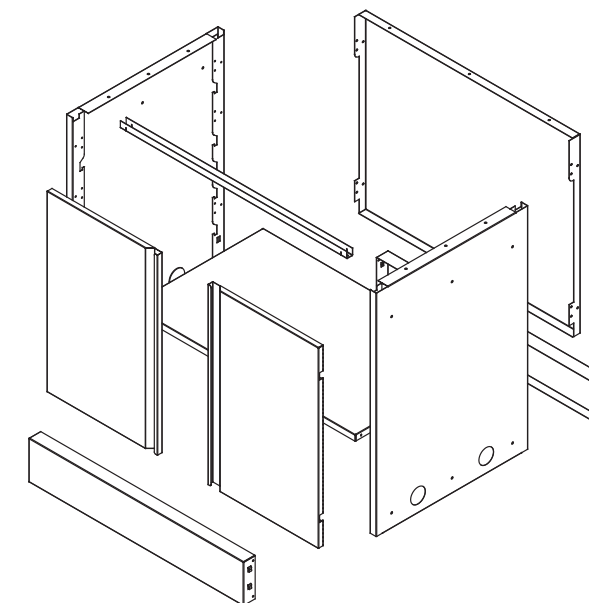
SHOP-FLEX cabinets are designed in six lengths plus an adjustable filler that can be cut to fit in the field for unlimited versatility. The 12", 18" and 24" units have one door; while the 30", 36" and 48" units have two doors. Drawers are only stocked in 18", 24" and 36" lengths but can be fabricated for any size cabinet if desired.



SHOP-FLEX Metal Cabinet System

SHOP-FLEX Features

Component design allows for tremendous versatility. Standard components can be configured in wide variety of ways for many design options.

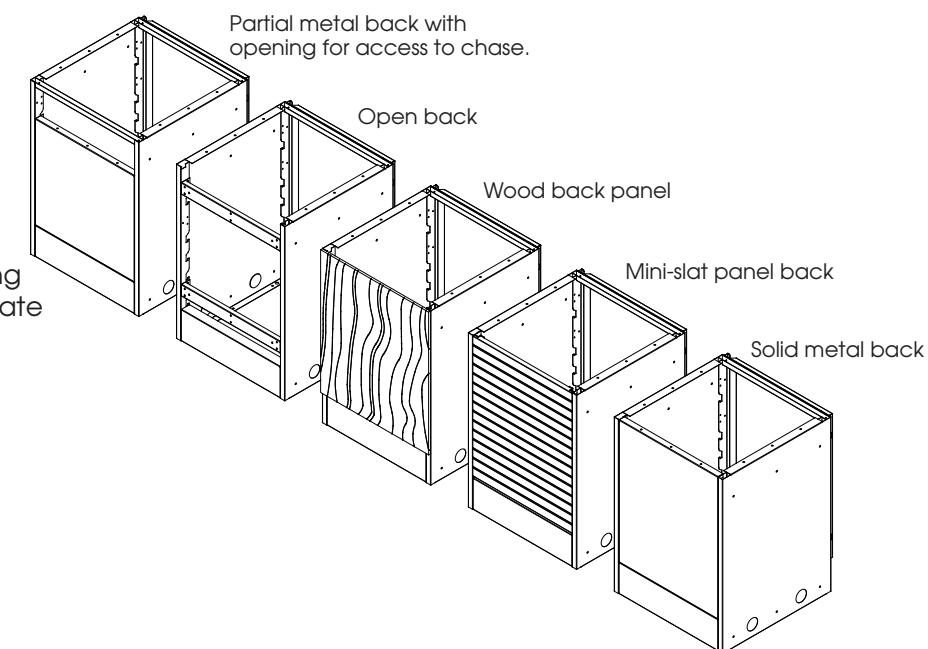


The base shelves are removable and the middle shelves are adjustable. The base panel is reversible, giving you the choice of a recessed base (with approximately 2" of toe space) or a base flush with the body of the cabinet.

We have a wide variety of cabinet countertops available including; plastic laminate, stainless steel and solid surface. Countertops are fabricated per layout (not individual unit) to minimize seams. The standard counter top is 6" deeper than the cabinet body to provide an electrical and plumbing chase when used in wall mounted applications, or 2" greater than the cabinet body for island configurations..

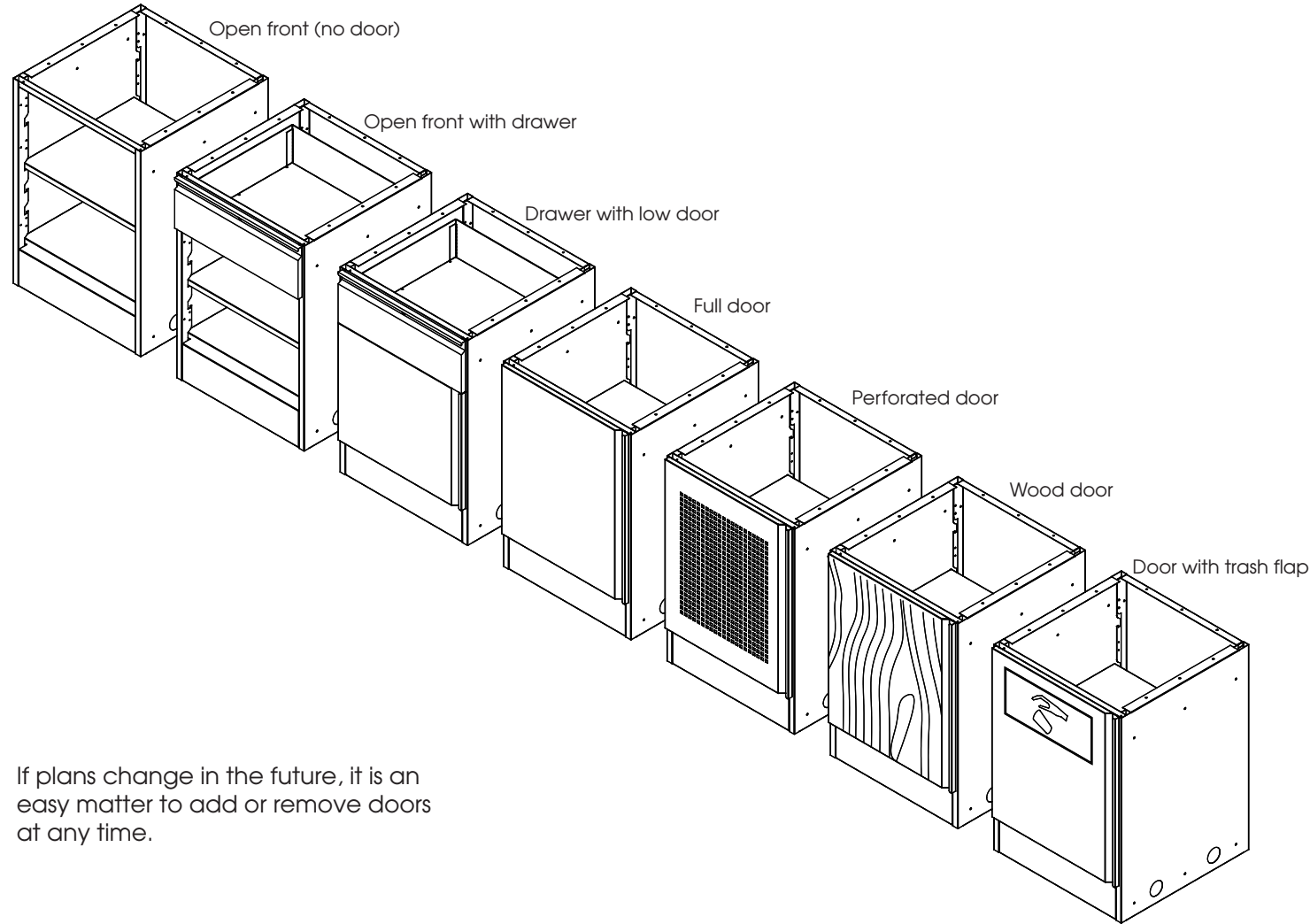
The standard cabinets are stocked in white and black, however we can customize your cabinet in any color available in the RAL system.

The cabinet backs are available in solid metal with a powder coat finish, partial metal with opening for access to chase, mini-slat for merchandising or with bracing bars for use with customized wood laminate panels or left open.





The cabinet fronts are available with solid metal doors, perf doors, customized wood doors, drawers or open. They can even combine doors and drawers as desired.



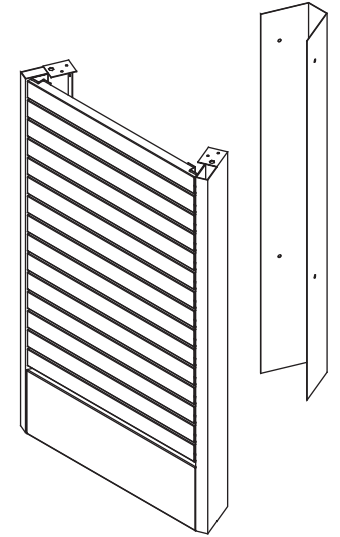
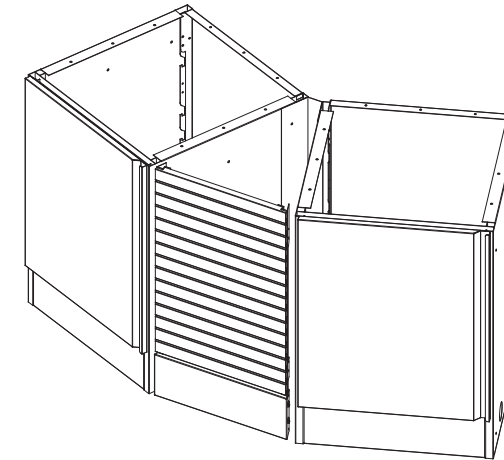
If plans change in the future, it is an easy matter to add or remove doors at any time.



45° WEDGE UNIT AND FILLER

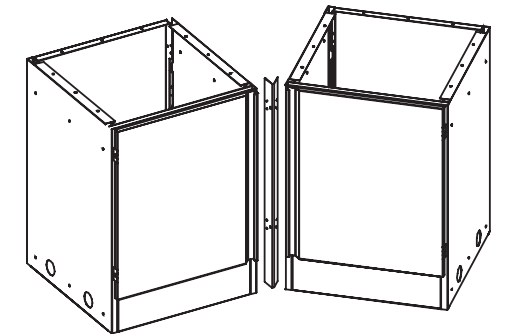
The wedge unit is designed to make a 45° turn in a cabinet run. The SHOP-FLEX Wedge unit is available for 24" and 30" cabinet depths and standard (33") and tall (40") cabinet heights. The back panels are available in solid metal, mini-slat or laminated wood panel.

Perspective drawing showing the 45-deg wedge in a cabinet run. Similar to the filler drawings below.



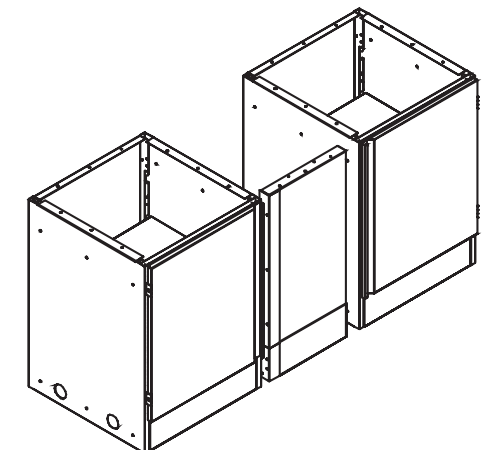
45 Degree Inside Filler Panel Features:

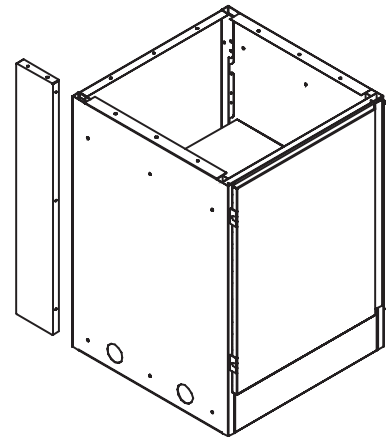
Designed to attach two units for an inside 45 degree corner. Available for both the cabinet with a depth of 18", 24" and 30". Standard height 33" and 39" (Excludes countertop). Fills base and cabinet area.



Adjustable Front Filler Panel Features:

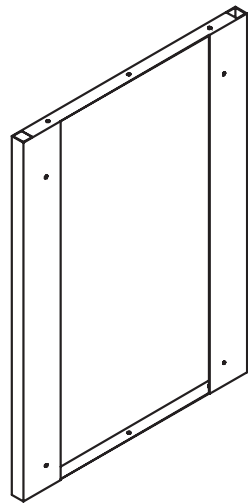
Designed to complete a cabinet run of virtually any length; this unique Adjustable Filler is designed to be easily cut in the field while still providing finished edges after cutting to the correct size. Standard heights of 26", 33" and 39" (excluding counter top height).





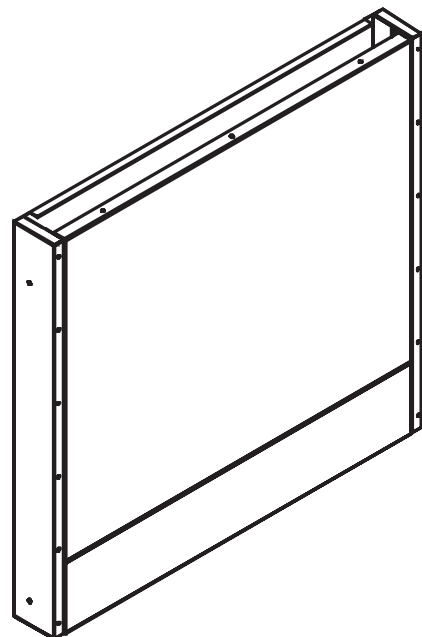
Chase Filler Panel Features:

Designed to finish off the opening of a standard 6" chase
 Fills base and cabinet area at the end of a run
 Standard height 33" and 39" (excluding countertop)



Finished End Filler Features:

Full height end panel to give a finished look to an exposed end of
 a run of cabinets, or to add approx 1" length to a run.
 Available in 33" or 39" heights.



Filler Box:

Filler Box is designed to finish off small areas in the cashier area,
 such as surrounds for refrigeration units, or half walls, etc.
 Length available: 12", 18", 24", 30", 36" and 48"
 Height available: 26", 33" and 39" (Excludes countertop)
 Depth available: 4"



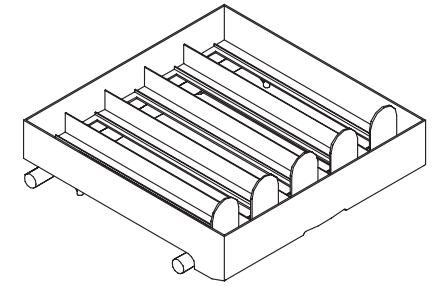
ACCESSORIES

Slide Out Cigarette Tray Features:

Newly developed single served, spring-loaded cigarette tray
 under the counter for quick access

Available in two sizes:

- 4 - 9-5/8"W X 12"D X 2"H
- 5 - 12"W X 12"D X 2"H



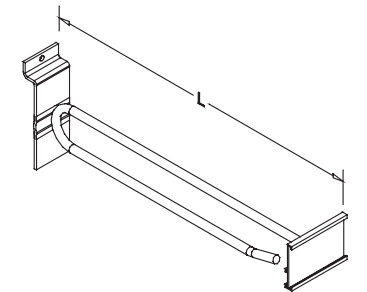
Each column has the capacity of 11 standard cigarette packages:

- 12" cabinet - Can fit (1) 4-column tray
- 18" cabinet - Can fit (1) 5-column tray
- 24" cabinet - Can fit (1) 4-column & (1) 5-column tray
- 30" cabinet - Can fit (2) 5-column trays
- 36" cabinet - Can fit (2) 4-column tray & (1) 5-column tray

Scanning Mini Slat Hooks Features:

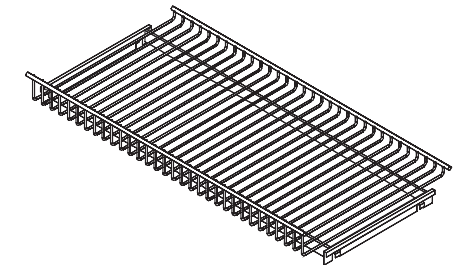
for merchandising on the front of the sales counter.

- Available lengths: 6" and 8"
- Standard stock color is galvanized
- Also available in 11" white
- Includes flip scan label holder



SHOP-FLEX Cabinets Wire Shelf for Mini Slat Features:

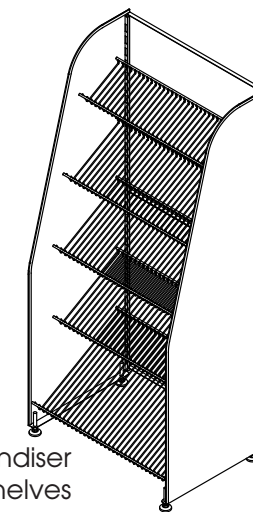
- Available depths: 6", 8", 10", 12"
- Available lengths: 2', 3' and 4'



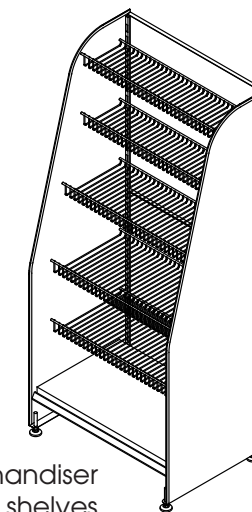
Vertical Merchandising Unit

New metal unit for merchandising
 display in front of Shop-Flex metal sales
 counters to maximize impulse sales.
 Shelves can be added as desired for
 specific merchandising arrangements.

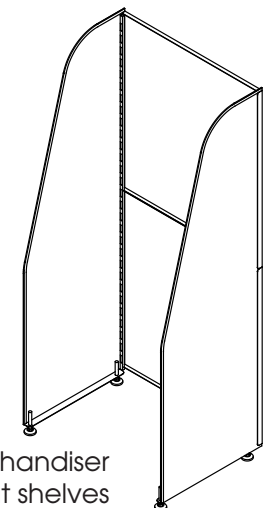
Vertical Merchandiser
 with 5 wire shelves



Vertical Merchandiser
 with base shelf and 5 wire shelves



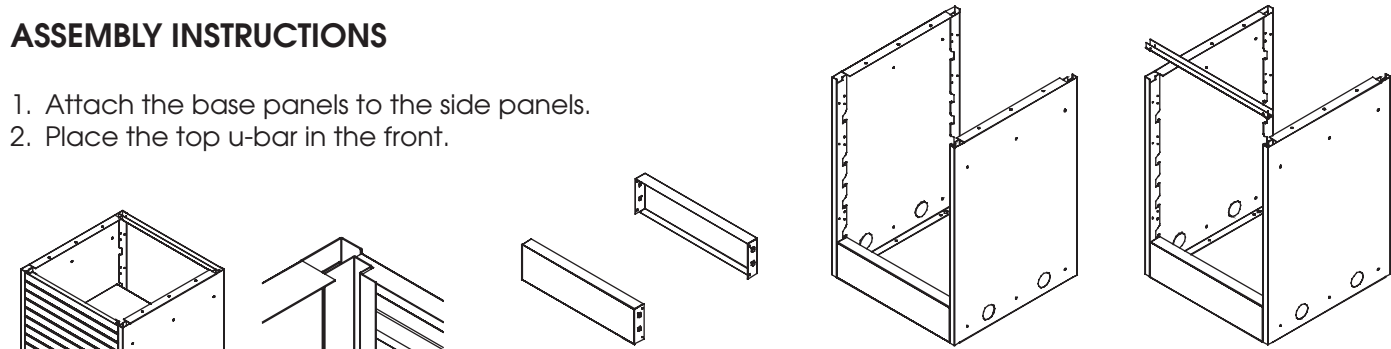
Vertical Merchandiser
 shell without shelves





ASSEMBLY INSTRUCTIONS

1. Attach the base panels to the side panels.
2. Place the top u-bar in the front.

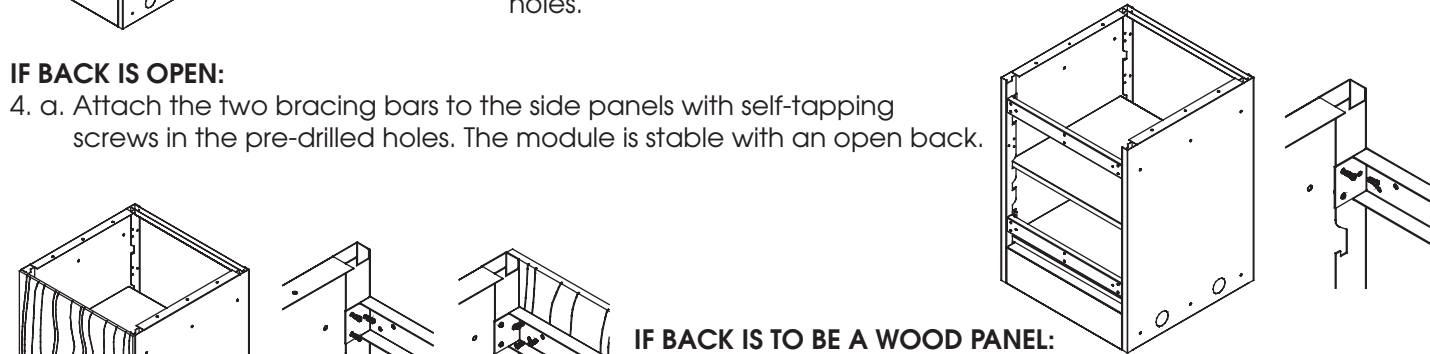


IF MODULE IS TO HAVE A FINISHED BACK:

3. Position the mini slat, solid steel or partially open panel on the back. Attach to the sides with self-tapping screws (supplied) in the pre-drilled holes.

IF BACK IS OPEN:

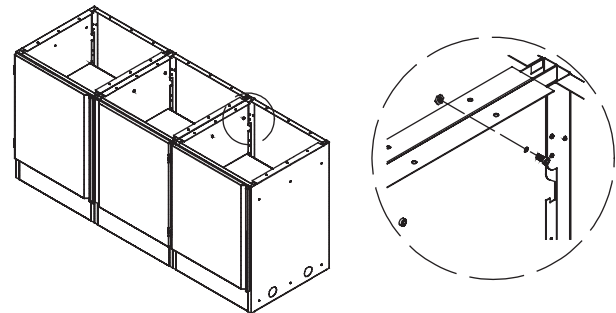
4. a. Attach the two bracing bars to the side panels with self-tapping screws in the pre-drilled holes. The module is stable with an open back.



IF BACK IS TO BE A WOOD PANEL:

4. b. Attach two bracing bars, per 4.a. Place the wood laminate panel behind the bracing bars and attach with wood screws through the pre-drilled holes in the bracing bars.

5. If you need to have electrical wires or plumbing going into or through the cabinet, now is the time to punch out the pre-cut holes near the bottom of the side panels.



6. Align the cabinets as designed. Secure cabinets together using the bolts and nuts (supplied) through the pre-drilled holes in the sides.
NOTE: If drawers are to be included, connect the slide support panels to the inside of the cabinets before the connecting bolts are inserted (the same holes are used for both). Then insert drawers onto the slides.

On The Front Side You Have The Following Options:

7. Leave it open.
8. If doors are to be included, attach the hinges to the cut outs in the back side of the door in the pre-drilled slots. Secure with screws. Next attach the hinges to the sides of the cabinets with three screws through the pre-drilled holes. Adjust hinges so that doors are level.
9. Place the counter top on the cabinets in its correct position and attach with wood screws through the holes in the top flange of the cabinet sides. One screw per side is plenty.

The installation is now complete.

