



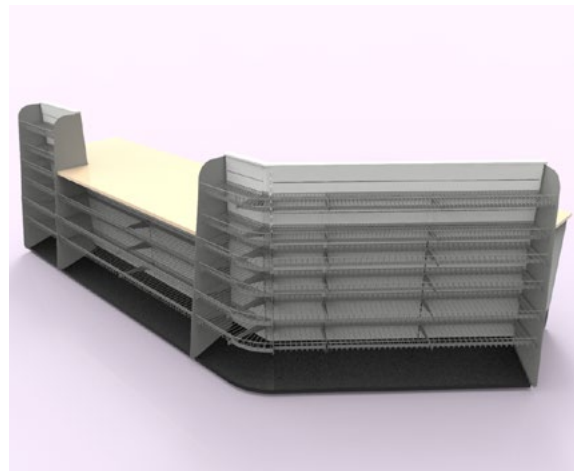
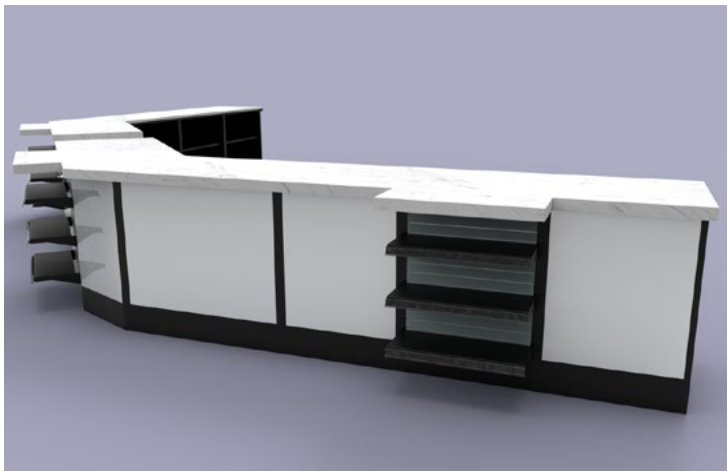
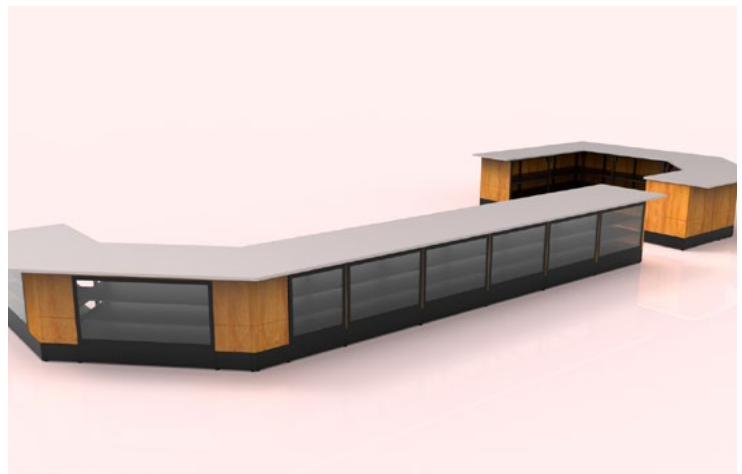
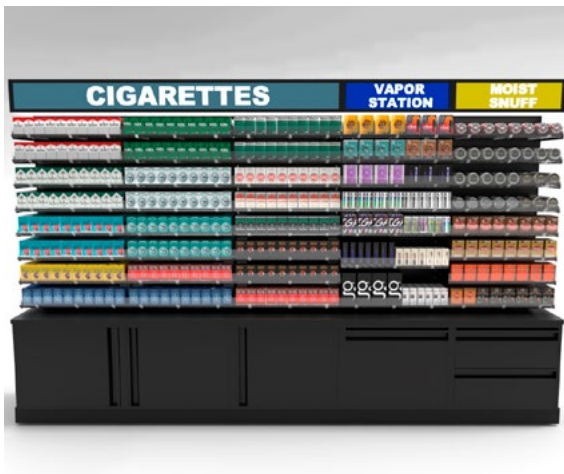
**SHOPCO USA**

**PRODUCT CATALOG**



**Your Full-Service Partner for  
Premier Store Fixture Solutions**

**SHOPCOUSA.COM**



**SHOPCO USA**  
7171 W. Sam Houston Parkway North  
Houston, TX 77040  
**PHONE: 713.934.2900 | FAX: 713.934.2929**

# Table of Contents

---

ABOUT SHOPCO USA	4
4D SALES COUNTERS	6
SHOP-FLEX METAL CABINETS	10
FOOD & BEVERAGE METAL CABINETS	22
TOBACCO FIXTURES	38
SHOPCO EURO GONDOLA SYSTEMS	50
MADIX GONDOLA SYSTEMS	54
SPECIALTY FIXTURES	64
DESIGN SERVICES	72
RAL COLOR CHOICES	80
SOLID SURFACE CHOICES	82
LAMINATE CHOICES	92

**WITH OVER 400 YEARS OF EXPERIENCE,  
OUR TEAM IS READY TO SERVE YOU!**

# A Letter From Our President & Chairman

---

## WELCOME!

Thank you for taking the time to consider SHOPCO U.S.A. for your store fixture needs! At SHOPCO, we are dedicated to providing our customers with the best customer service experience possible. SHOPCO was founded in 1985 with the philosophy of serving our customers with a premier product, innovative designs, unparalleled customer service, and the shortest lead time in the industry.

We take pride in our high-quality, versatile, and long-lasting retail merchandising systems, including Metal Food Service Cabinets, Metal Sales Counters, Tobacco Fixtures, and Gondola Shelving Systems. Over the years, we've grown to be one of the leading fixture suppliers to the small retail marketplace, focused on convenience stores, travel centers, liquor stores, and tobacco outlets.

As our product line continues to grow, our values remain the same. We strive to remain the marketplace leader through superior product design, continual research and development, creative store concepts, and a team of employees who are passionately committed to exceeding the customer's expectations daily. Providing customers with the shortest lead time in the store fixture industry is just one of many elements contributing to our excellent customer service.

We invite you to browse through this product catalog and examine the many ways we can assist with your store remodel projects or new build designs. You will find examples of the award-winning designs possible with our unique component system. Our professional sales team and creative designers are waiting to help design your store with the limitless possibilities of our all-metal system, designed to enhance a store's image, increase impulse sales, and last for decades to come.

Please feel free to contact us at [shopcousa.com](http://shopcousa.com) or call us at (713) 934-2900. We invite you to "Come and Discover the SHOPCO Difference!"

Sincerely,



**TOM MORRIS**  
President



**DWIGHT ASTON**  
Chairman



# Customizing Your Fixture Solutions

---

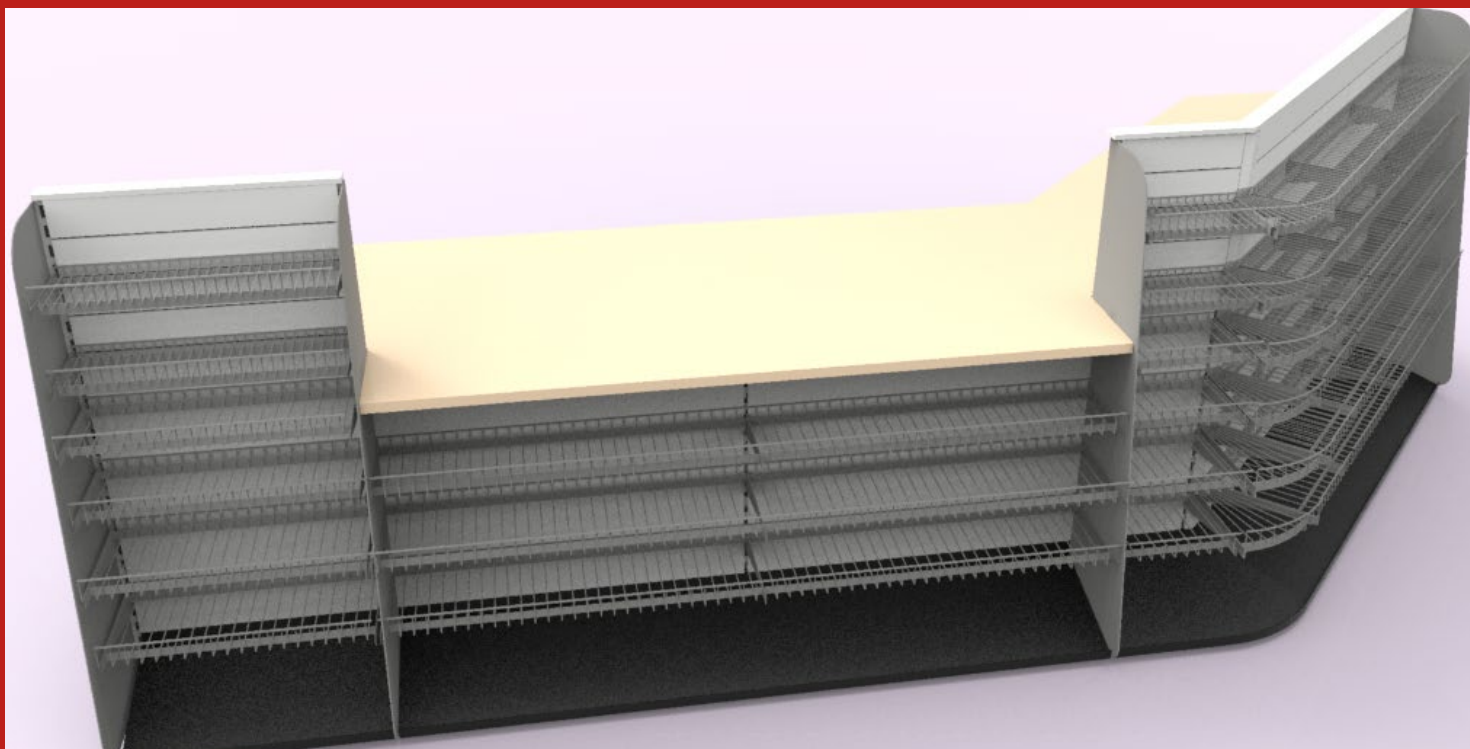
For over three decades the SHOPCO Team have been working with all retail channels to provide the most versatile, yet durable and aesthetically pleasing interior store fixtures. If you are looking for a true partnership for your in-store fixture needs that will take the time to understand your business needs, and form a relationship far beyond the sale itself, then SHOPCO is the company of choice! Regardless of your business type, SHOPCO has an interior fixture solution for you!

SHOPCO has developed an array of all-metal fixture systems to meet your design requirements for gondola merchandising, food and beverage counter solutions, the all important sales counter presentation, tobacco fixtures and many other specialty fixtures to achieve all your merchandising goals.

Combine these spectacular fixtures with our remarkable sales staff, AutoCAD design offering and first class customer service, and you will have everything you need to win the merchandising “battle”.

## METALING IN MERCHANDISE

- Award-winning, all-metal sales counters designed not only to increase impulse sales, but also to be team member friendly.
- The Metal Cabinet System, stocked for immediate shipment for quick serve food counter and beverage solutions.
- Introducing the latest innovation for Tobacco Fixtures from SHOPCO USA, available in Standard Height (84”) and Low Profile (58”) to meet your store’s needs. Standard set-ups are available or build your own configuration. SHOPCO’s standard component system makes it easy to build most configurations to fit your store’s needs.
- Exceptional component-style shelving fixtures that promote your products and provide limitless versatility for optimal presentation.
- SHOPCO is proud to offer Madix products and SHOPCO is one of a only a few Master Distributors of Madix product in the United States. Madix fixtures are manufactured in a highly automated facility with the most Modern technology to create store fixtures that are as cost efficient as they are functional.
- Industry’s shortest lead-time on product offerings.
- Made to order custom counter tops and specialty fixtures.
- Unbeatable SHOPCO service (sales support, CAD Design, supply and installation).



## GET THE MOST IMPACT OUT OF YOUR SALES COUNTER

The retail sales counter can potentially have the greatest impact on the customer. Since every customer must stop here, it is important to make the visit productive and profitable. By utilizing the same standard, mass produced components from SHOPCO's Euro-Style Gondola Shelving, the 4D Upright Sales Counter is a functional, all-metal sales counter designed just for you! The 4D Sales Counter is a unique component checkout counter design. Much like the concept of an "erector set", this sales counter system is made up of mass-produced standard components that can be assembled in different ways to create a customized solution for all retail merchandising needs.

4D Sales Counters are available with metal smooth, pegboard, slat wall and mini-slat wall panels. Curved sections are also available. Counter interior on Clerk side can be customized to suit various equipment needs as required including interior shelves, cigarette trays, bag holders, printer shelves, trash can areas, drawers, safe openings and built/drop-in lottery displays.

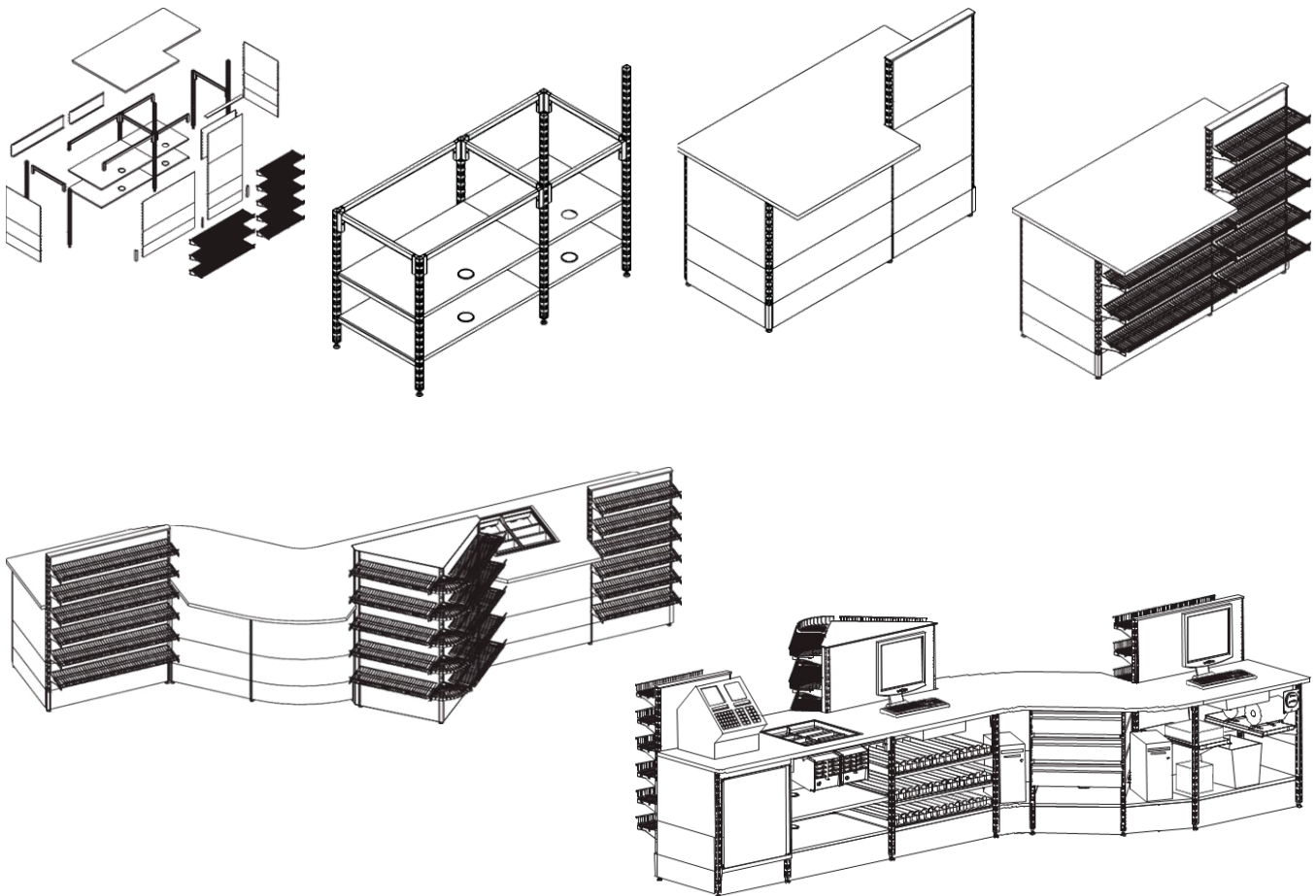
Our 4D Sales Counters can be designed to match our food and beverage service counters and gondola shelving systems.

# 4D Sales Counters

---

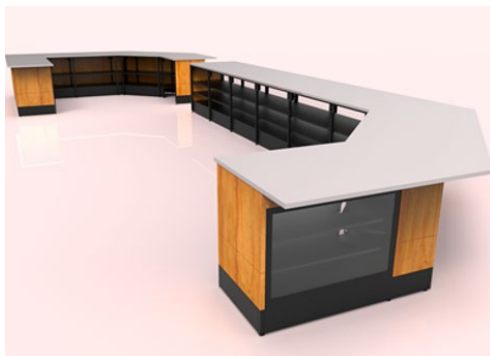
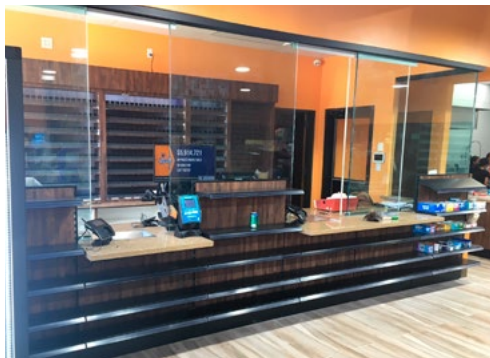
SHOPCO's 4D Sales Counter incorporates curved and straight sections with vertical merchandising to promote impulse sales, while better defining checkout points. The counter system permits customization of the Clerk side for maximum utilization of available space. Design your sales counter to fit your specific needs and improve the efficiency of your Store Clerks. Sales Counters are in stock in black, white, and beige.

Designed with the intent to impact the customer, the 4D Sales Counter can incorporate true radius corners and shelves, vertical front merchandisers and counter tops in a wide variety of finishes, including laminate, solid surface, or a combination. SHOPCO's sales counters can easily be designed to integrate a wide variety of c-store equipment, cigarette drawers, bagging systems, and more. Likewise, SHOPCO's component style design allows for easy access to all areas of the sales counter for your electrical requirements and offers the ability to embrace many ergonomic features.



# 4D Sales Counters

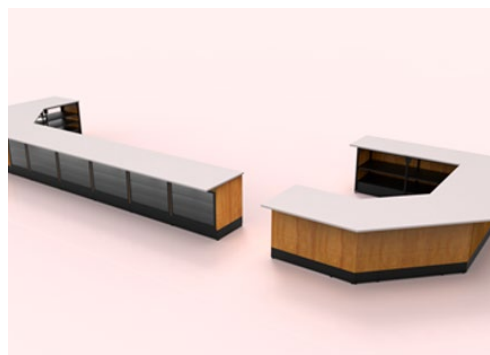
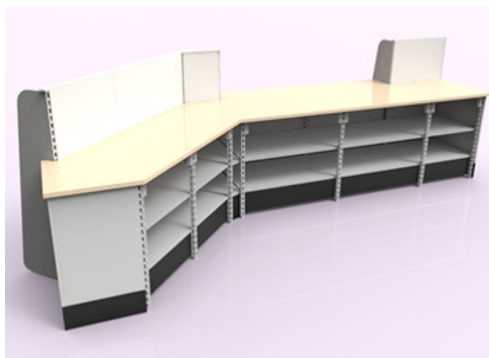
---

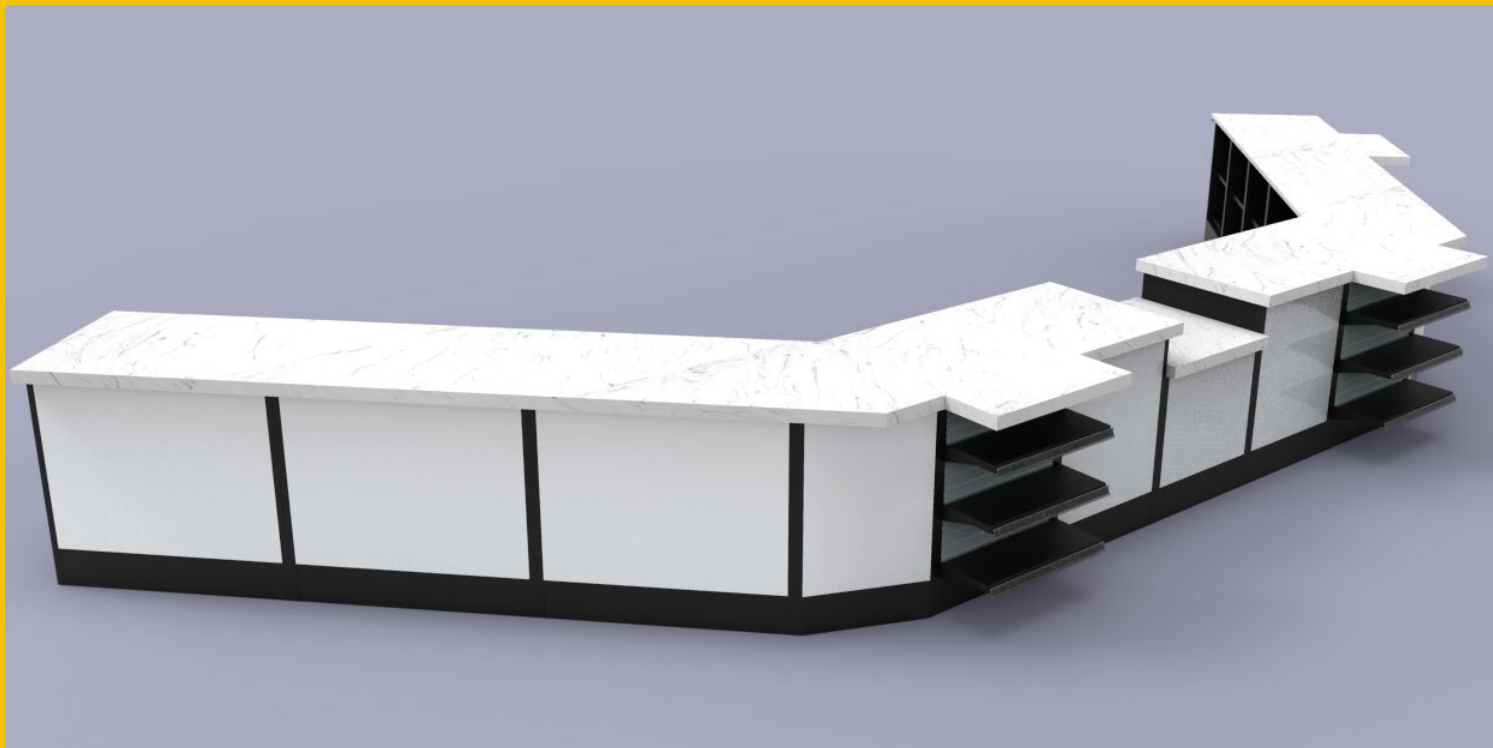




# 4D Sales Counters

---

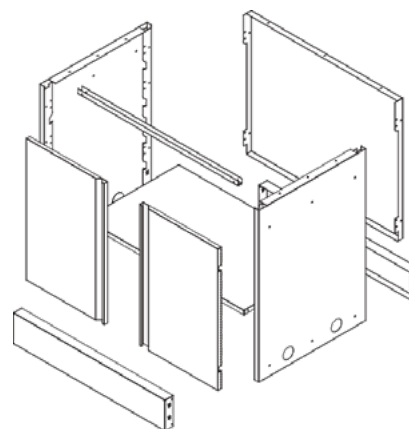




The SHOP-FLEX Cabinet is constructed of SAE 1010 steel. Our team specially designed this cabinet to be as flexible as possible. Our concept was to have a cabinet with the durability of steel, combined with the economy and modern look of wood fronts with customized counter tops.

## **GREAT FOR A VARIETY OF USES:**

- Sales Counters
- Shop-In-Shop Kiosk Counters
- Reception Desk
- Rear Storage Counters
- Warehouse Counters



## **SHOP-FLEX FEATURES:**

- Component design allows for tremendous versatility. Standard components can be configured in wide variety of ways for many design options.
- Standard cabinets are stocked in white and black, however we can customize your cabinet in any color available in the RAL system.



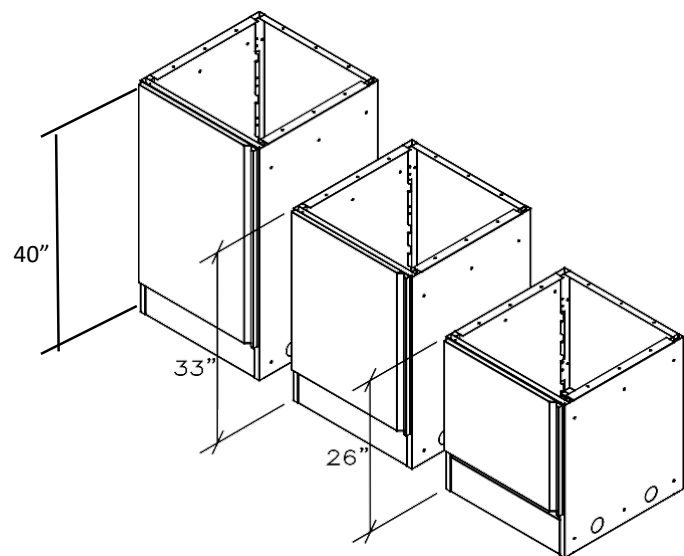
# Shop-Flex Metal Cabinets

---

## SHOP-FLEX SIZES - THREE HEIGHTS:

Two Heights (Cabinet Body Heights - 26" and 33" which includes an integral 6" base). Total overall heights with a 1" thick top are 27" and 34".

The base shelves are removable and the middle shelves are adjustable. The base panel is reversible, giving you the choice of a recessed base (with approximately 2" of toe space) or a base flush with the body of the cabinet.



## HEIGHT VERSATILITY:

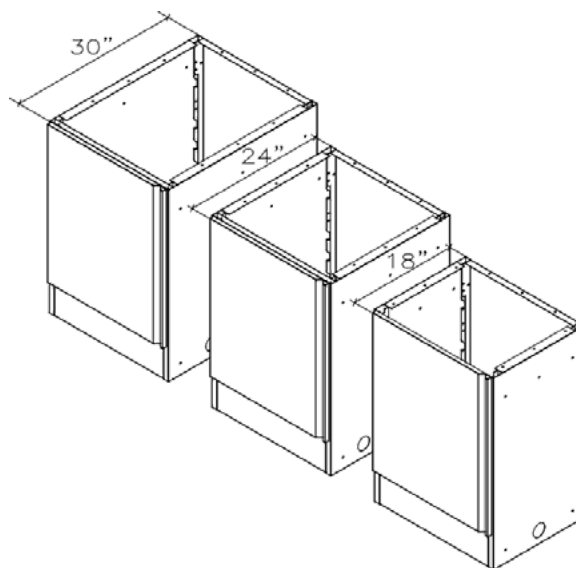
The heights are designed so that the incremental difference between each height is equal to the height of a drawer. Therefore a standard height unit can include a standard door (on the attendant side), or a low door plus a drawer, or no door.

# Shop-Flex Metal Cabinets

## SHOP-FLEX SIZES - THREE DEPTHS:

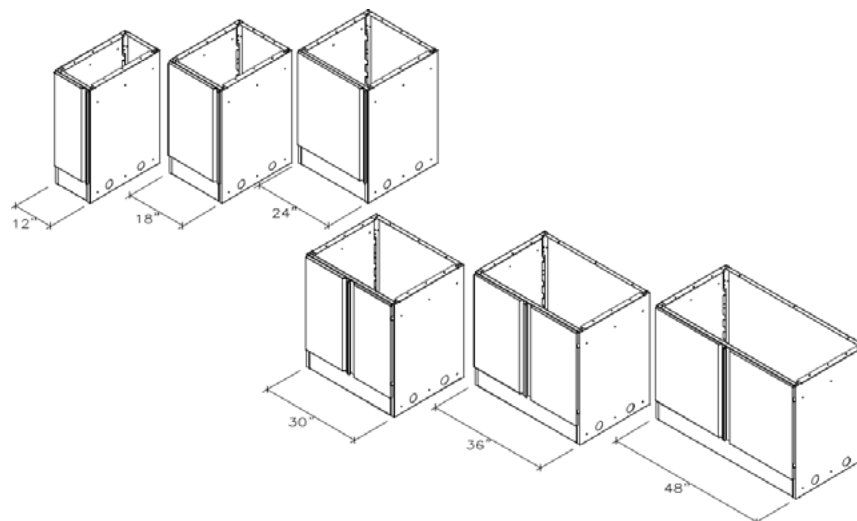
Cabinet body depths 18", 24" and 30" which can be combined with a deeper counter top to provide an electric and plumbing chase. To yield overall depths of 18" with no chase to 36" with 6" chase for wall applications.

For sales counter applications, the counter top typically has a 1" overhang in the front and the back for a depth 2" greater than the cabinet body. Some sales counter applications utilize an extended top at the pay points on the front of the counter to the depth of the merchandising shelving.



## SHOP-FLEX CABINET LENGTHS - SIX LENGTHS:

SHOP-FLEX cabinets are designed in six lengths plus an adjustable filler that can be cut to fit in the field for unlimited versatility. The 12", 18" and 24" units have one door; while the 30", 36" and 48" units have two doors. Drawers are only stocked in 18", 24" and 36" lengths but can be fabricated for any size cabinet if desired.



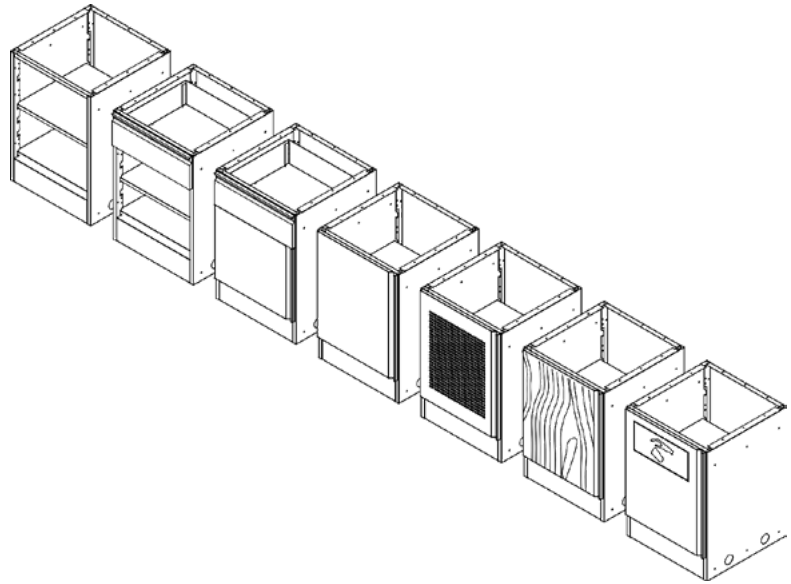
# Shop-Flex Metal Cabinets

---

## CABINET FRONTS:

Available with solid metal doors, customized wood doors, drawers or open. They can even combine doors and drawers as desired.

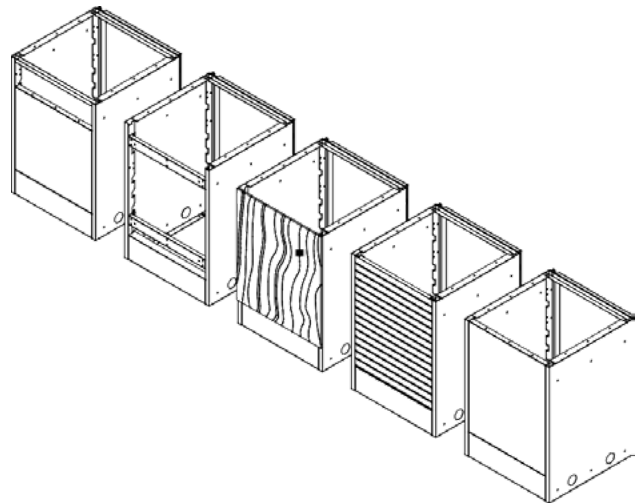
If plans change in the future, it is an easy matter to add or remove doors at any time.



## CABINET BACKS:

Available in solid metal with a powder coat finish, partial metal with opening for access to chase, mini-slat for merchandising or with bracing bars for use with customized wood laminate panels or left open.

The cabinet backs are available in solid metal with a powder coat finish, partial metal with opening for access to chase, mini-slat for merchandising or with bracing bars for use with customized wood laminate panels or left open.



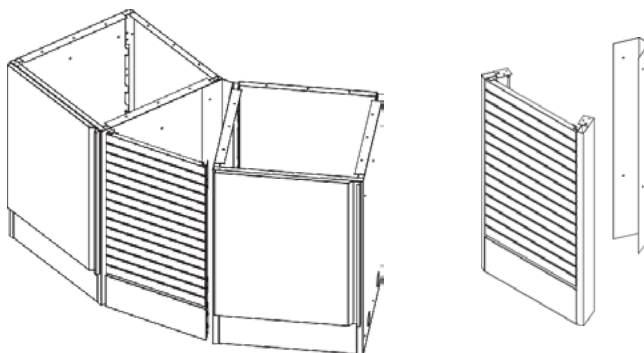
# Shop-Flex Metal Cabinets

---

## 45-DEGREE OUTSIDE WEDGE UNIT:

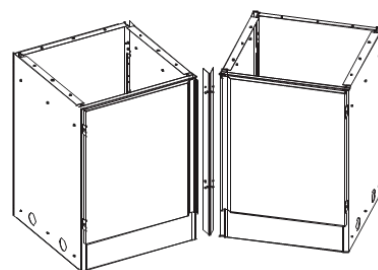
The wedge unit is designed to make a 45 degree turn in a cabinet run. The SHOP-FLEX Wedge unit is available for 24" and 30" cabinet depths and standard (33") cabinet height. The back panels are available in solid metal, mini-slat or laminated wood panel.

Perspective drawing showing the 45 degree wedge in a cabinet run. Similar to the filler drawings below.



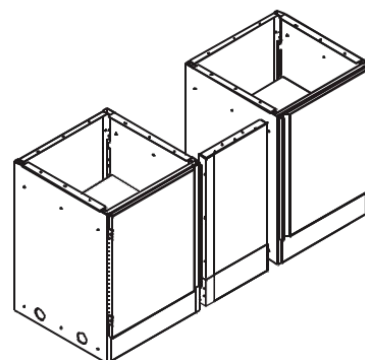
## 45-DEGREE INSIDE FILLER PANEL FEATURES:

Designed to attach two units for an inside 45 degree corner. Available for both the cabinet with a depth of 18", 24" and 30". Standard height 33" (excludes counter top). Fills base and cabinet area.



## ADJUSTABLE FRONT FILLER PANEL FEATURES:

Designed to complete a cabinet run of virtually any length; this unique Adjustable Filler is designed to be easily cut in the field while still providing finished edges after cutting to the correct size. Standard heights of 26" and 33" (excludes counter top).

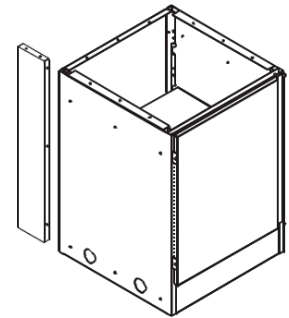


# Shop-Flex Metal Cabinets

---

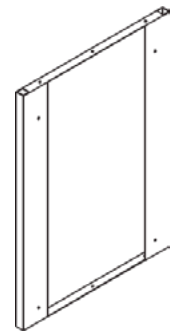
## CHASE FILLER PANEL FEATURES:

Designed to finish off the opening of a standard 6" chase. Fills base and cabinet area at the end of a run. Standard height 33" (excludes counter top).



## FINISHED END FILLER FEATURES:

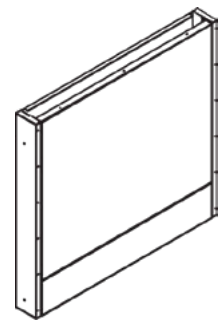
Full height end panel to give a finished look to an exposed end of a run of cabinets, or to add approximately 1" length to a run. Available in 33" or 39" heights (excludes counter top).



## FILLER BOX:

Filler Box is designed to finish off small areas in the cashier area, such as surrounds for refrigeration units, or half walls, etc

- Length available: 12", 18", 24", 30", 36" and 48"
- Height available: 26" and 33" (Excludes counter top)
- Depth available: 4"



## COUNTER TOPS:

We have a wide variety of cabinet counter tops available including; plastic laminate, stainless steel and solid surface. Counter tops are fabricated per layout (not individual unit) to minimize seams. The standard counter top is 6" deeper than the cabinet body to provide an electrical and plumbing chase when used in wall mounted applications, or 2" greater than the cabinet body for island configurations.

# Shop-Flex Cabinet Accessories

---

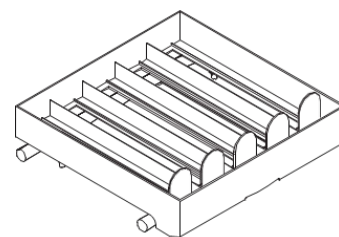
## SLIDE-OUT CIGARETTE TRAY FEATURES:

Single served, spring-loaded cigarette tray under the counter for quick access.

- 4 Column - 9-5/8"W X 12"D X 2"H
- 5 Column - 12"W X 12"D X 2"H

### Column capacity of 11 standard cigarette packages:

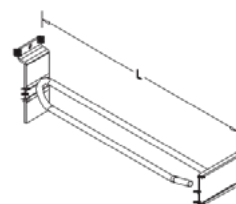
- 12" cabinet - Can fit (1) 4-column tray
- 18" cabinet - Can fit (1) 5-column tray
- 24" cabinet - Can fit (1) 4-column & (1) 5-column tray
- 30" cabinet - Can fit (2) 5-column trays
- 36" cabinet - Can fit (2) 4-column tray & (1) 5-column tray



## SCANNING MINI SLAT HOOKS FEATURES:

For merchandising on the front of the sales counter.

- Available lengths: 6" and 8"
- Standard stock color is galvanized
- Also available in 11" white
- Includes flip scan label holder



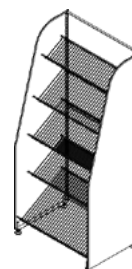
## WIRE SHELF FOR MINI SLAT FEATURES:

- Available depths: 6", 8", 10", 12"
- Available lengths: 2', 3' and 4'



## VERTICAL MERCHANDISING UNIT:

New metal unit for merchandising display in front of Shop-Flex metal sales counters to maximize impulse sales. Shelves can be added for specific merchandising arrangements.

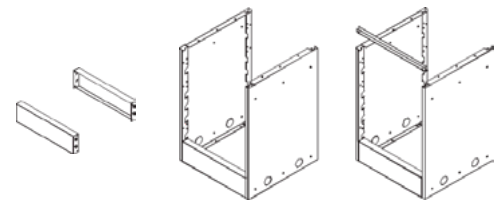




# Shop-Flex Metal Cabinets

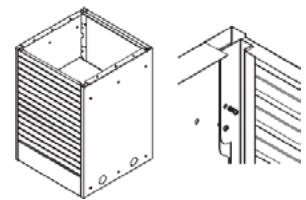
## ASSEMBLY INSTRUCTIONS:

1. Attach the base panels to the side panels.
2. Place the top u-bar in the front.



### IF MODULE IS TO HAVE A FINISHED BACK:

3. Position the mini slat, solid steel or partially open panel on the back.  
Attach to the sides with self-tapping screws (supplied) in the pre-drilled holes.

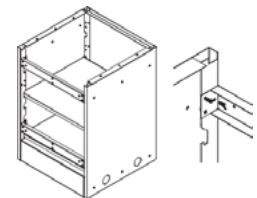


### IF BACK IS OPEN:

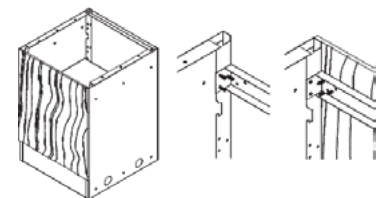
- 4a. Attach the two bracing bars to the side panels with self tapping screws in the pre-drilled holes. The module is stable with an open back.

### IF BACK IS TO BE WOOD PANEL:

- 4b. Attach two bracing bars, per 4a. Place the wood laminate panels behind the bracing bars and attach with wood screws through the pre-drilled holes in the bracing bars.
5. If you need to have electrical wires or plumbing going into or through the cabinet, now is the time to punch out the pre-cut holes near the bottom of the side panels.

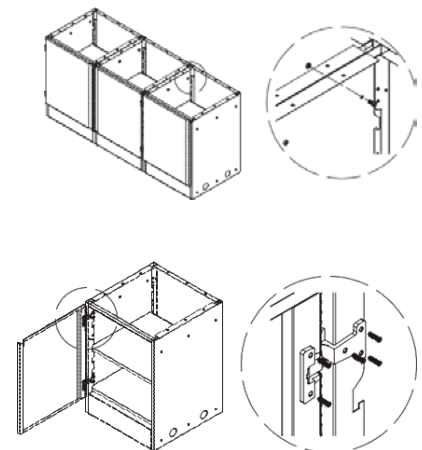


6. Align the cabinets as designed. Secure cabinets together using the bolts and nuts (supplied) through the pre-drilled holes in the sides.  
NOTE: If drawers are to be included, connect the slide support panels to the inside of the cabinets before the connect bolts are inserted (the same holes are used for both). Then insert drawers onto the slides.



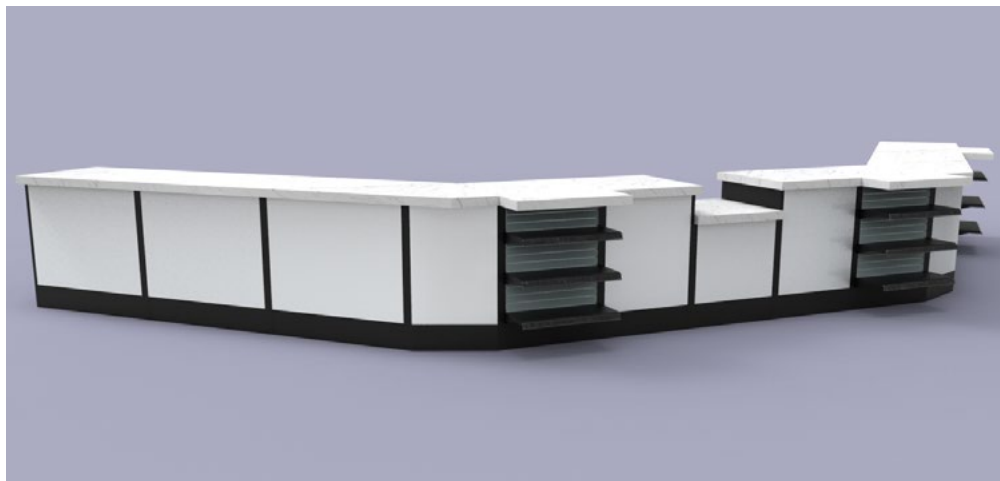
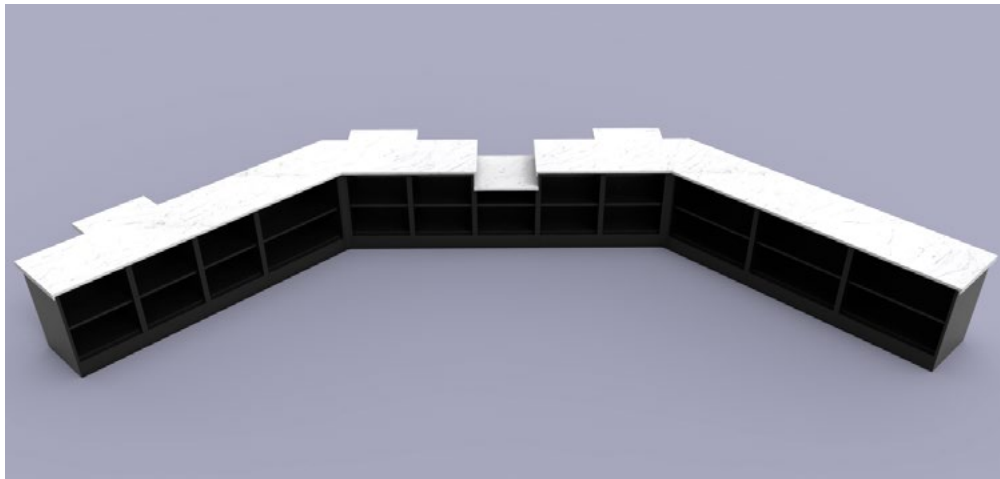
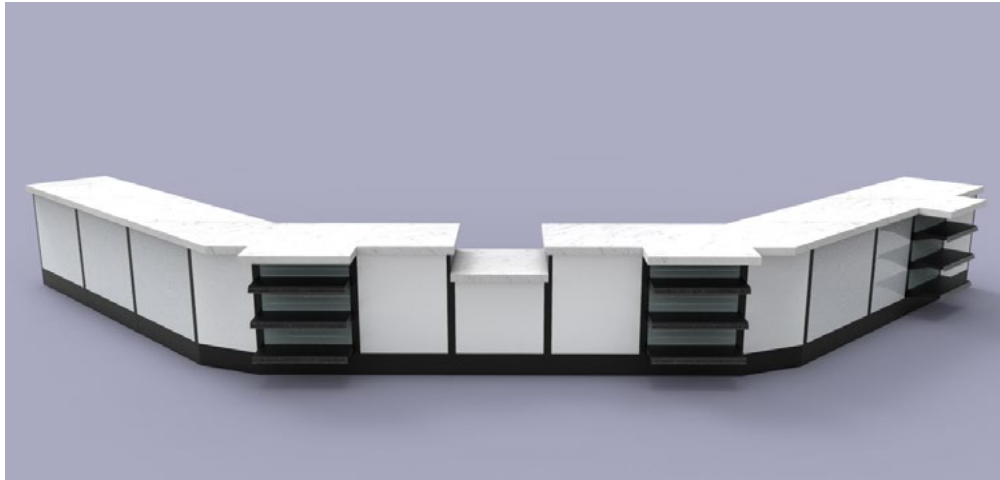
### ON THE FRONT SIDE, YOU HAVE THE FOLLOWING OPTIONS:

7. Leave it open.
8. If doors are to be included, attach the hinges to the cut outs in the back side of the door in the pre-drilled slots. Secure with screws. Next attach the hinges to the sides of the cabinets with three screws through the pre-drilled holes. Adjust hinges so that doors are level.
9. Place the counter top on the cabinets in its correct position and attach with wood screws through the holes in the top flange of the cabinet sides. One screw per side is plenty.



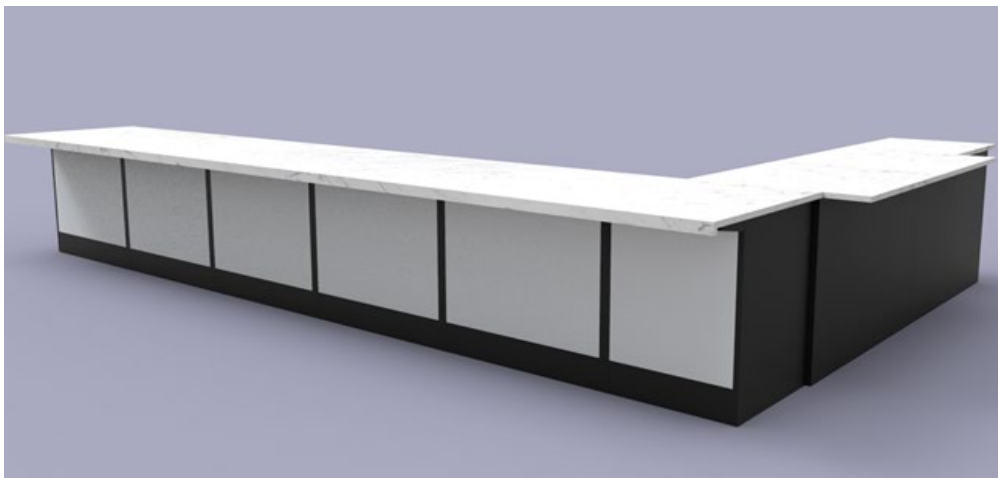
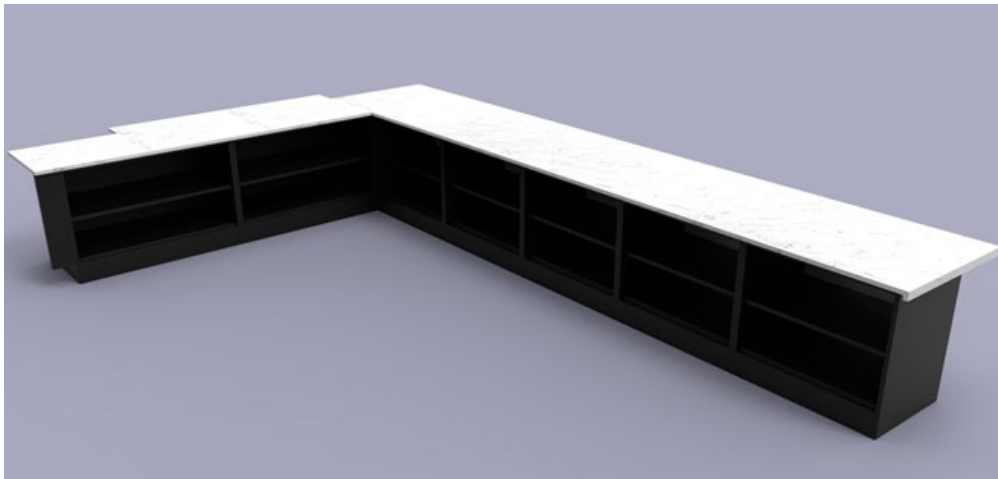
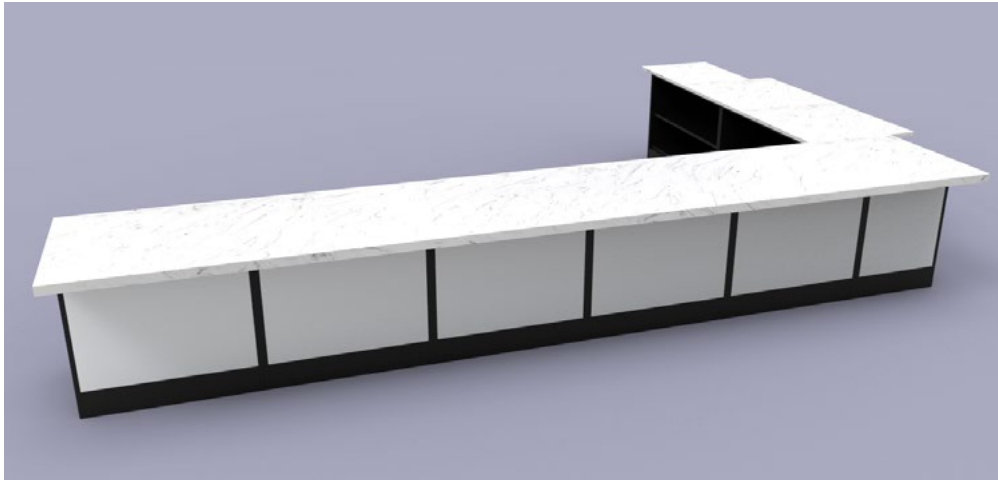
# Shop-Flex Metal Cabinets

---



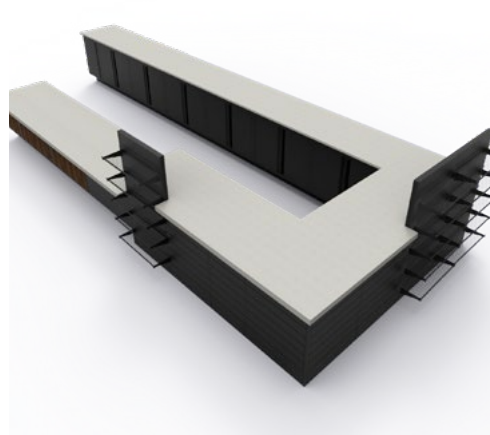
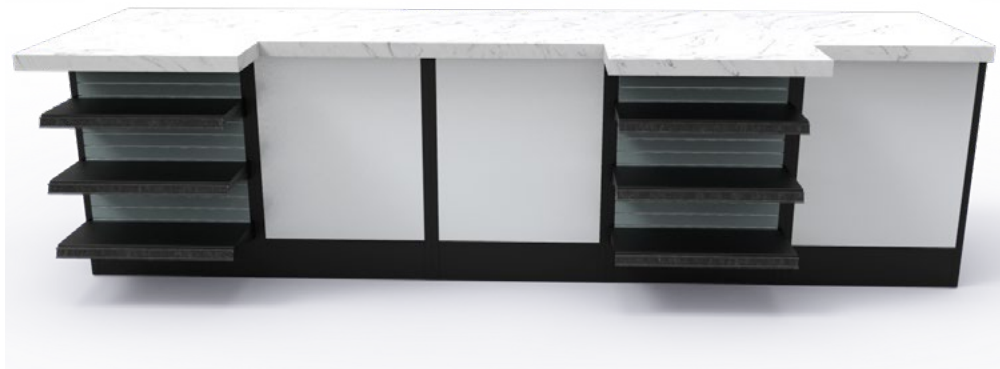
# Shop-Flex Metal Cabinets

---



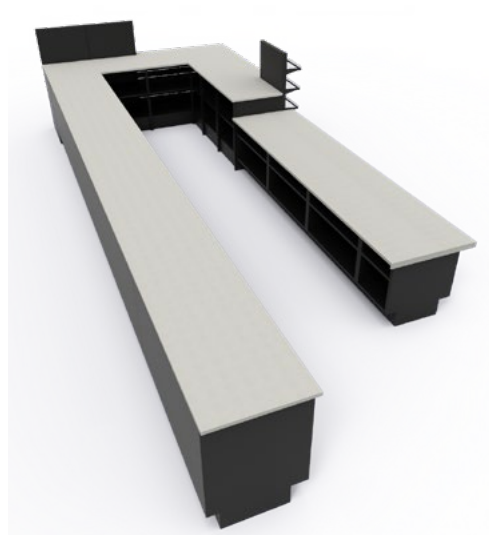
# Shop-Flex Metal Cabinets

---

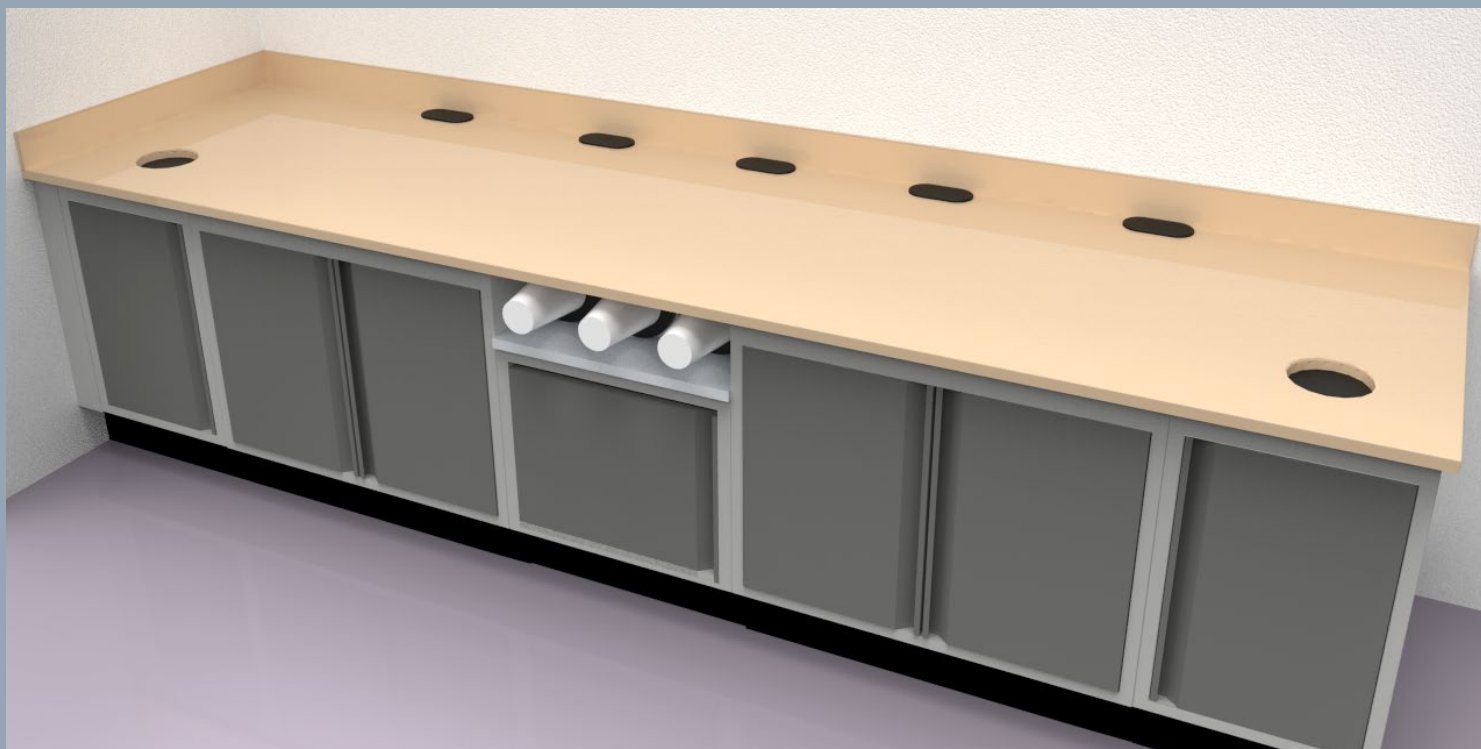


# Shop-Flex Metal Cabinets

---







SHOPCO's Metal Food Service Counters carry the same load capacities and qualities of traditional systems, but surpass these systems with the unique advantage of being in stock, ready-to-ship with no fabrication lead time! SHOPCO's Metal Food Service Counters System utilizes a variety of units to create a Counter sequence that meets your specific retail needs. We offer a full line of all-metal Counters with options such as prep units, waste units, beverage units, condiments units, and microwave units.

All units are stocked in white, beige, and black. Counter top fabrications are also available through SHOPCO: Solid Surface, Plastic Laminate and Stainless Steel. In addition, you also have the choice of stainless-steel legs or metal bases. The all-metal components provide limitless design opportunity, while maintaining the durability and cleanliness of powder-coated metal, which makes the Metal Cabinet System ideal for QSR and retail food service applications.

The system is so flexible, merely swapping a few pieces can change the lengths, depths and Counters style in minutes.



# Food & Beverage Metal Cabinets

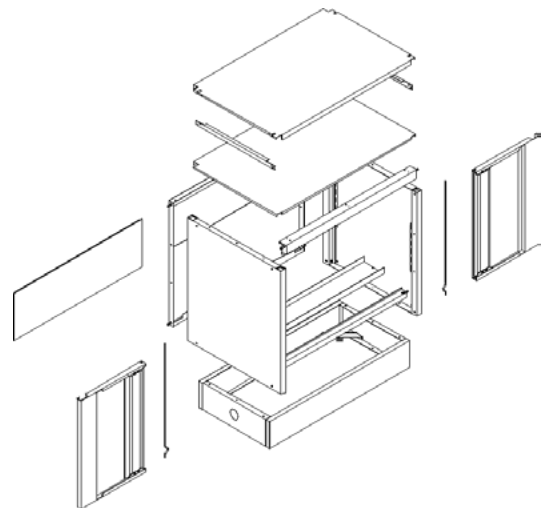
---

## CUSTOM STYLE FABRICATION ADVANTAGES:

- Units typically ship assembled for ease of installation. However, they may be ordered unassembled for reduced shipping costs.
- Quick ship availability, since components are stocked rather than fabricated per order.
- Ease of on-site modifications without ordering an entire new cabinet.
- Complete inventory of components stocked in black, beige and white.
- Allows for easy custom powder-coating of non-standard colors.
- Permits versatility unmatched in our industry.

## ADDITIONAL FEATURES:

- Variety of cabinet lengths and depths.
- Standard cabinet bodies are 33" high including a 5" base, for a total cabinet height of 34" with a 1" thick counter top.
- Wide variety of counter tops available, including plastic laminate, stainless steel and solid surface materials.
- Removable base shelves and adjustable interior shelves.
- Standard cabinets include back panels with openings to access electrical and plumbing chase (Optional back panel fillers are available).
- Counter tops fabricated per layout (not individual unit) to minimize seams.
- Standard counter top design is deeper than cabinet body to provide electric and plumbing chase behind unit.
- Units come with standard 6" high metal base with four levelers for easy adjustment or optional stainless steel or powder-coated legs.
- Many design options are available, such as plastic laminate on doors and/or custom doors.

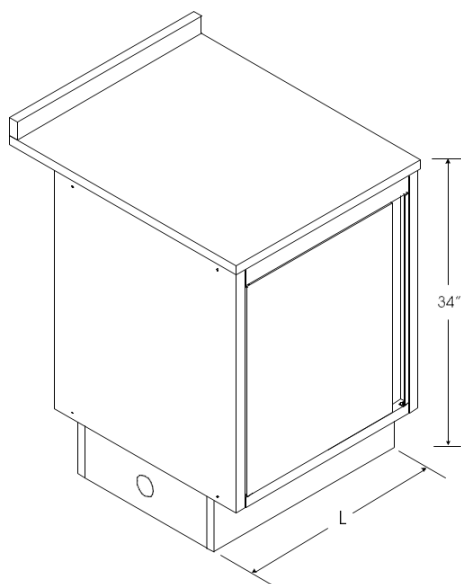


# Food & Beverage Metal Cabinets

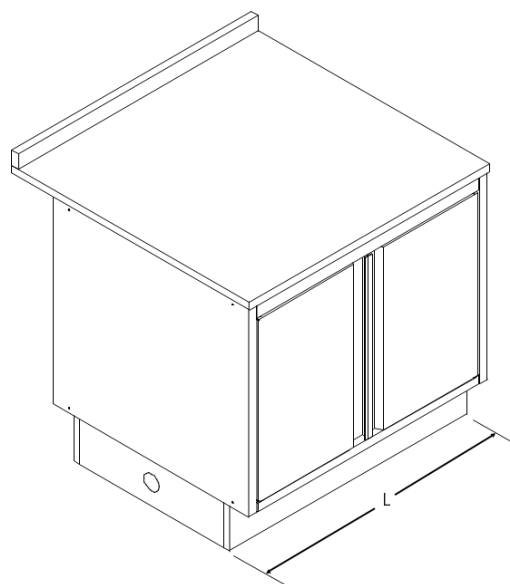
---

## PREP UNIT FEATURES:

- Back panel with opening to access chase
- Optional filler for back panel opening
- One adjustable interior shelf
- One removable base shelf
- Cabinet body height - 33" (excluding counter top)
- Cabinet body depths - 18", 24", 30", 36"
- Cabinet body lengths - 12", 18", 24", 30", 36" and 48"
- Standard counter tops are designed to provide a 5 1/2" electrical and plumbing chase behind cabinet
- Optional end filler panels available



12", 18" AND 24" LONG  
CABINETS HAVE ONE DOOR



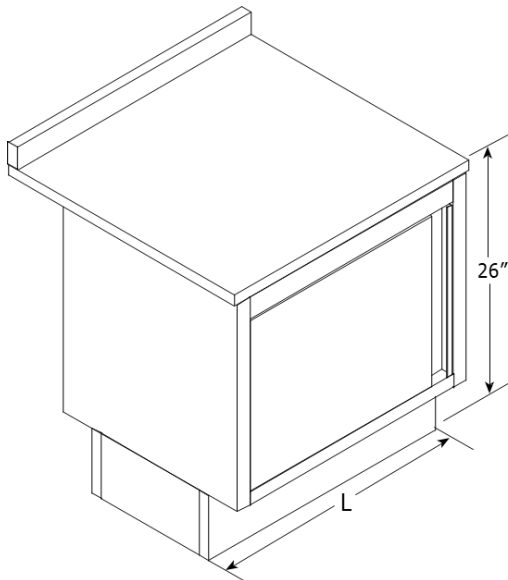
30", 36" AND 48" LONG  
CABINETS HAVE TWO DOORS

# Food & Beverage Metal Cabinets

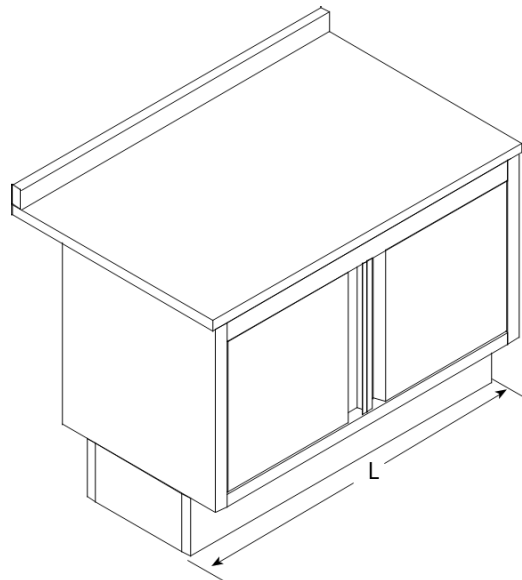
---

## LOW PREP UNIT FEATURES:

- Full back panel (with no chase access opening)
- One adjustable interior shelf
- One removable base shelf
- Cabinet body height - 25" (excluding counter top)
- Cabinet body depth - 18" and 24"
- Cabinet body length - 24", 36" and 48"
- Standard counter tops are designed to provide a 5.5" electrical and plumbing chase
- Optional end filler



24" LONG CABINET  
HAS ONE DOOR



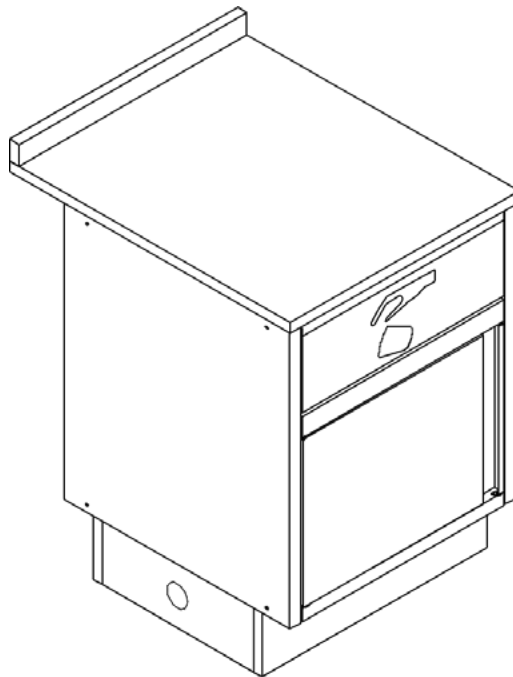
36" AND 48" LONG  
CABINETS HAVE TWO DOORS

# Food & Beverage Metal Cabinets

---

## WASTE UNIT FEATURES:

- One door and one stainless steel trash flap
- Waste bin included (with stop for correct positioning of trash can)
- Removable base shelf
- Full back panel with no chase access opening
- Cabinet body height - 33" (excluding counter top)
- Cabinet body lengths - 12", 18" and 24"
- Cabinet body depths - 24" and 30"
- Standard counter tops are designed to provide a 5 1/2" electrical and plumbing chase
- Optional end filler panels available

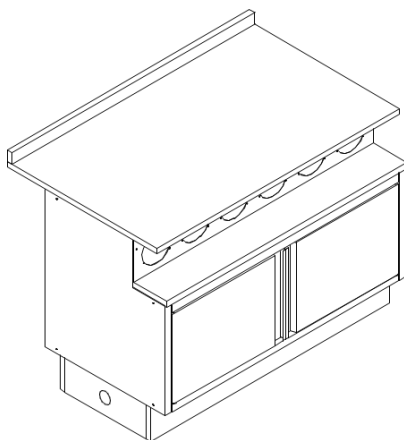


# Food & Beverage Metal Cabinets

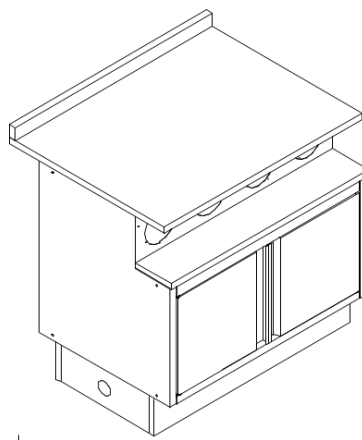
---

## CUP DISPENSER UNITS FEATURES:

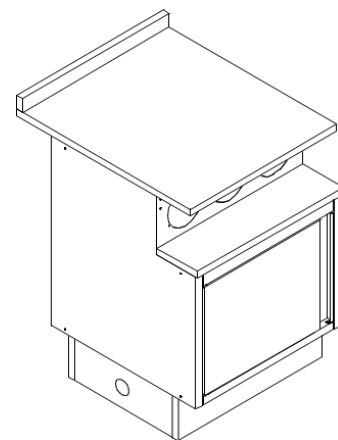
- Stainless steel step ledge with cut-outs for cup dispensers
- Cup dispensers sold separately
- Internal support bar for cup dispensers is included
- Back panel with opening to access chase
- One removable base shelf
- Cabinet body height - 33" (excluding counter top)
- Cabinet body depths - 24", 30" and 36"
- Cabinet body length - 24", 36" and 48"
- Heavy duty internal support optional for 36" length, standard for 48" length units
- Standard counter tops are designed to provide a 5 1/2" electrical and plumbing chase
- Optional end filler panels available



48" LONG UNIT  
6 CUP DISPENSER OPENINGS



36" LONG UNIT  
4 CUP DISPENSER OPENINGS



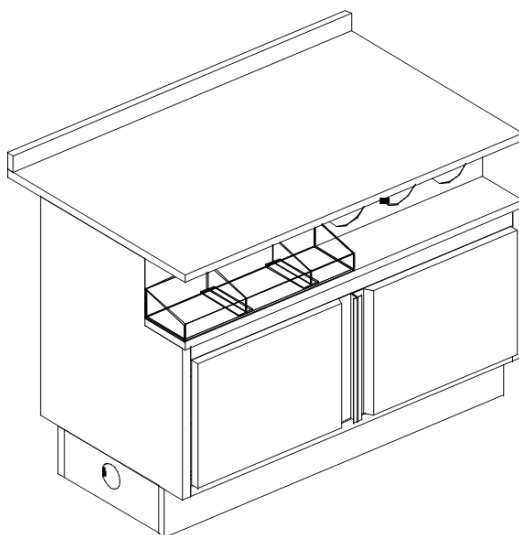
24" LONG UNIT  
3 CUP DISPENSER OPENINGS

# Food & Beverage Metal Cabinets

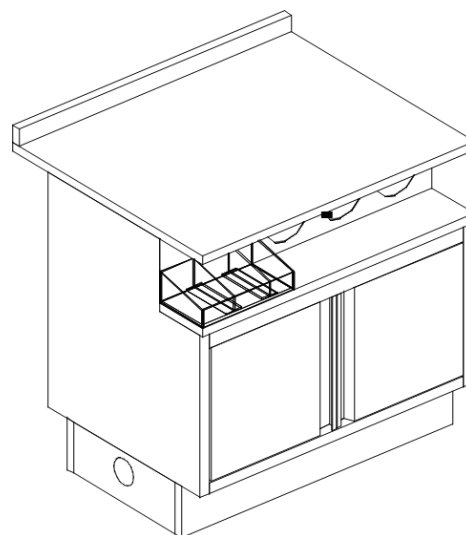
---

## CUP DISPENSER PLUS CONDIMENT TRAY UNIT FEATURES:

- Stainless steel step ledge with cut-outs for cup dispensers, and positioning pins for acrylic condiment tray
- Cup dispensers sold separately
- Acrylic condiment tray included
- Internal support
- Back panel with opening to access chase
- One removable base shelf
- Cabinet body height - 33" (excluding counter top)
- Cabinet body depths - 24", 30" and 36"
- Cabinet body lengths - 36" and 48"
- Heavy duty internal support optional for 36" length, standard for 48" length
- Standard counter tops are designed to provide a 5 1/2" electrical and plumbing chase
- Optional end filler panels available



48" LONG UNIT  
3 CUT-OUTS + 24" TRAY



36" LONG UNIT  
3 CUT-OUTS + 12" TRAY

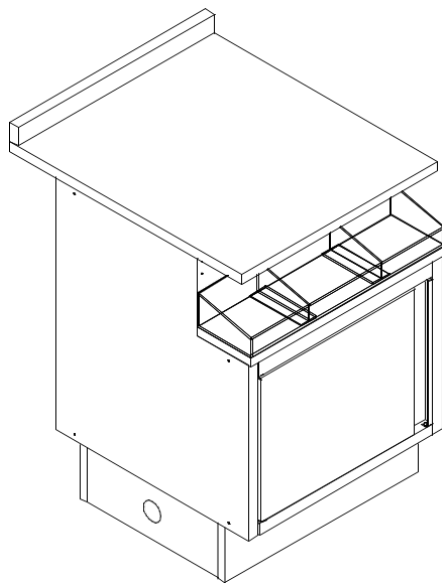


# Food & Beverage Metal Cabinets

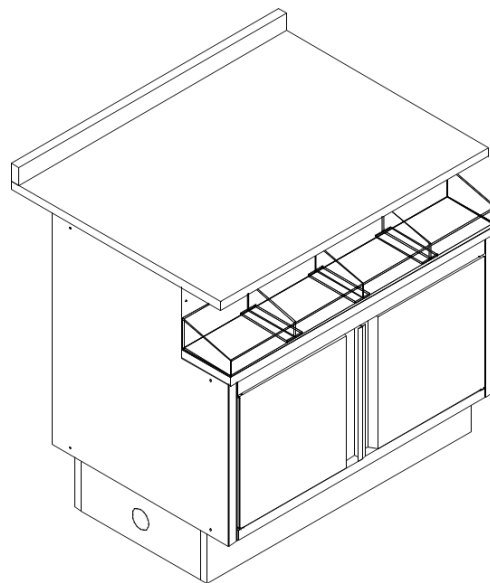
---

## CONDIMENT UNIT FEATURES:

- With stainless steel step ledge and acrylic condiment tray
- Back panel with opening to access chase (optional filler for back panel opening available)
- One removable base shelf
- Cabinet body height - 33" (excluding counter top)
- Cabinet body length - 24", 36" and 48"
- Cabinet body depths - 18", 24", 30" and 36"
- Internal heavy duty support included in all 48" length units
- Special 48"L by 18"D unit available
- Standard counter tops are designed to provide a 5 1/2" electrical and plumbing chase
- Optional end filler panels available



24" LONG CABINETS  
HAVE ONE DOOR



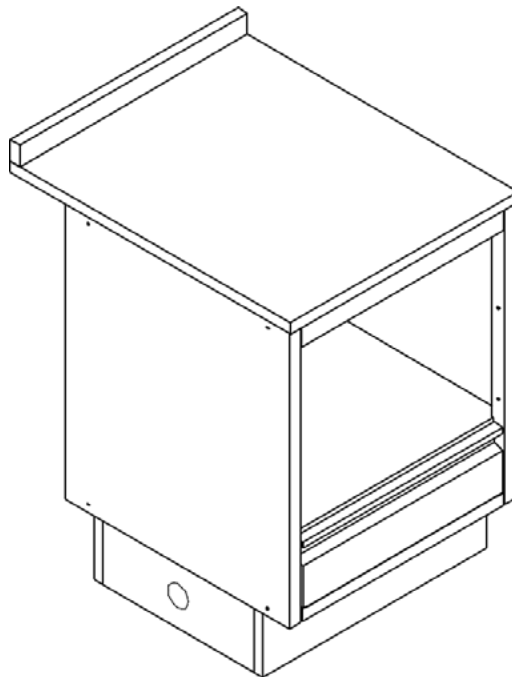
36" AND 48" LONG  
CABINETS HAVE TWO DOORS

# Food & Beverage Metal Cabinets

---

## MICROWAVE UNIT FEATURES:

- Back panel with opening to access chase (optional filler for back panel opening available)
- One storage drawer
- Interior shelf for microwave placement
- Cabinet body height - 33" (excluding counter top)
- Cabinet body length - 24"
- Cabinet body depth - 24"
- Clear opening for microwave cabinet is 22 1/8" w x 16 1/8" h x 20" d
- Standard counter tops are designed to provide a 5 1/2" electrical and plumbing chase
- Optional end filler panels available

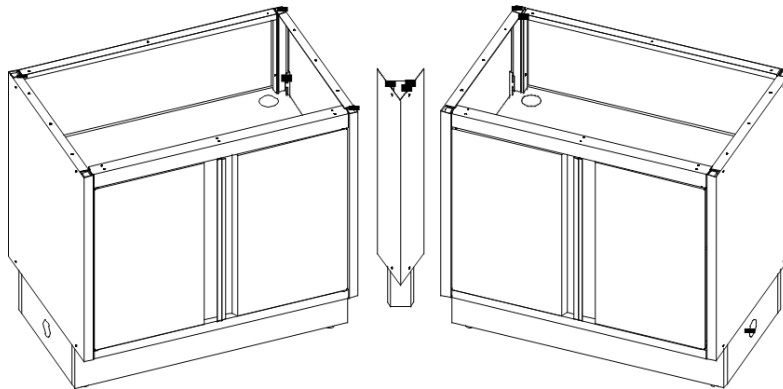


# Food & Beverage Metal Cabinets

---

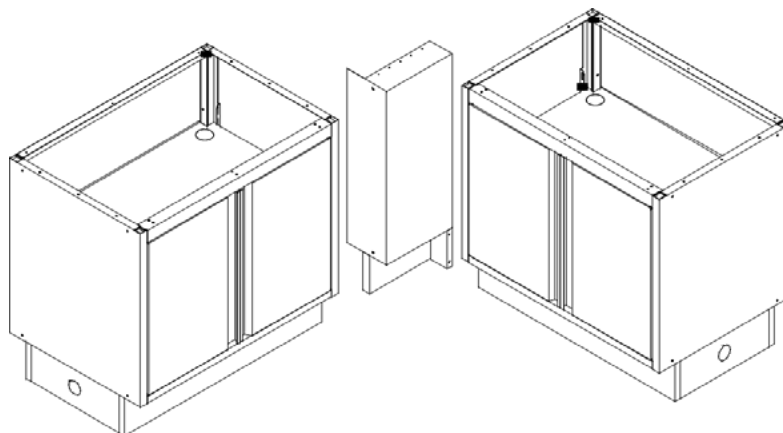
## 45 DEGREE FILLER PANEL FEATURES:

- Designed to attach two units for an inside 45 degree corner
- Fills base and cabinet area



## 90 DEGREE FILLER PANEL FEATURES:

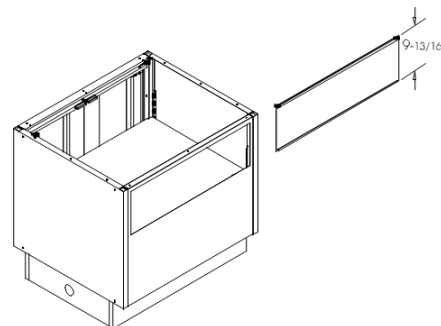
- Designed to attach two units for an inside 90 degree corner
- Fills base and cabinet area



# Food & Beverage Metal Cabinets

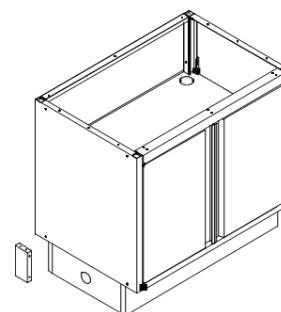
## BACK PANEL FILLER FEATURES:

- To fill chase opening in back panel of cabinet
- Can be easily installed and removed from within the cabinet body



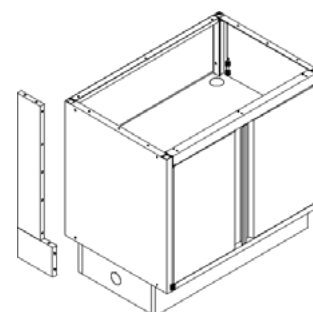
## BASE PANEL FILLER FEATURES:

- To fill base opening between cabinet base and wall
- To be used in place of end filler for cabinets without chase



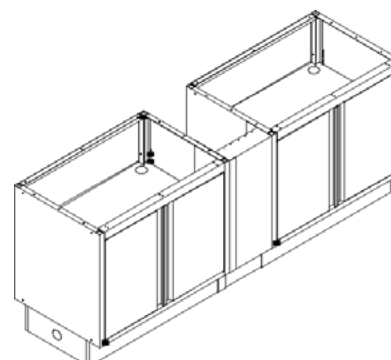
## END FILLER PANEL FEATURES:

- Designed to finish off the opening of a standard 5 1/2" chase
- Finishes base and cabinet area at the end of a run



## ADJUSTABLE FILLER PANEL FEATURES:

- Designed to complete a cabinet run unequal to length of standard cabinet bodies. \*Easily cut to size in field; adjustable from 2" to 12" in length
- Unique design provides finished edges after cutting to size

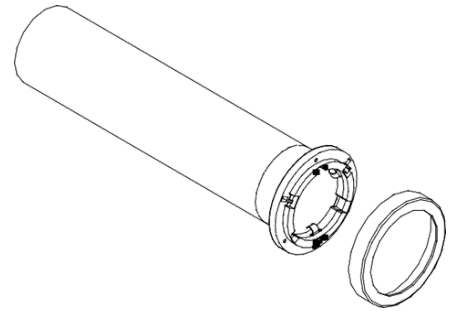


# Food & Beverage Metal Cabinets

---

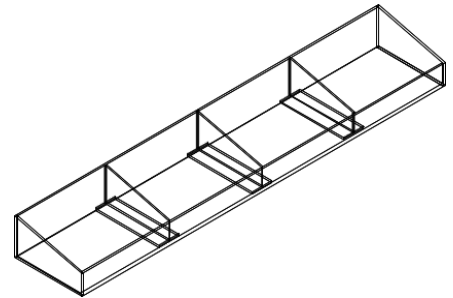
## CUP DISPENSERS:

- One-size-fits-all adjustable cup dispenser utilizes a three clip design for a variety of paper, plastic and foam cups. The fingers can be adjusted to fit 8 oz. to 44 oz. size cups without having to be removed from the cabinet. Available in 18" and 23" lengths.



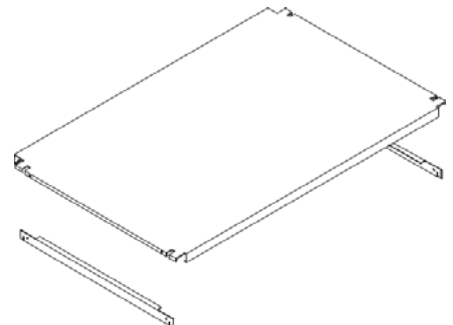
## CONDIMENT TRAY:

- 6" deep
- Includes adjustable dividers for various condiment items
- Tray lengths - 12", 24" and 36"



## ADJUSTABLE INTERIOR SHELF:

- Requires two brackets

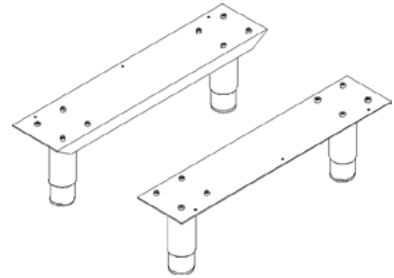


# Food & Beverage Metal Cabinets

---

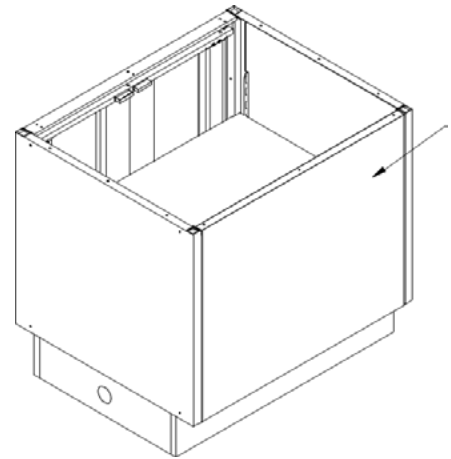
## STAINLESS STEEL & POWDER COATED LEGS:

- To be used in place of standard base when desired
- Height is adjustable from 5.5" to 9.5"
- Castors are also an available option



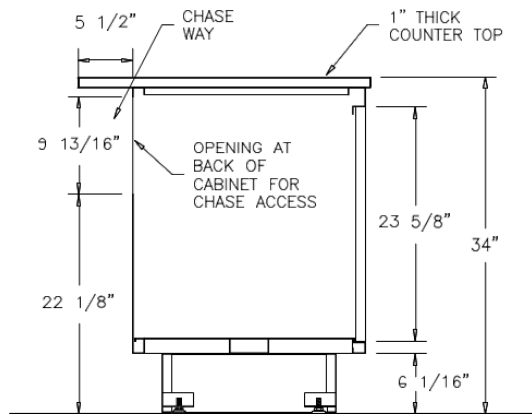
## FULL BACK PANEL:

- Back panel without chase opening
- Available for all cabinet sizes
- Supplied standard on trash unit

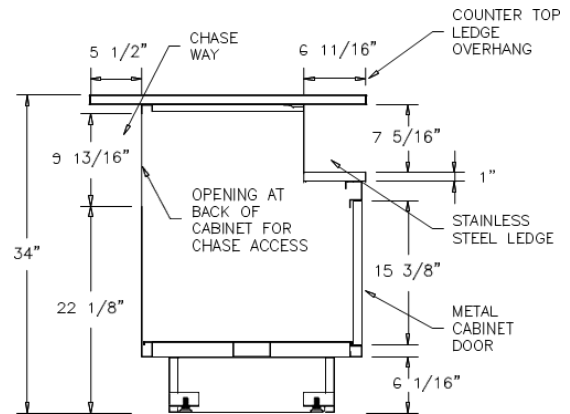




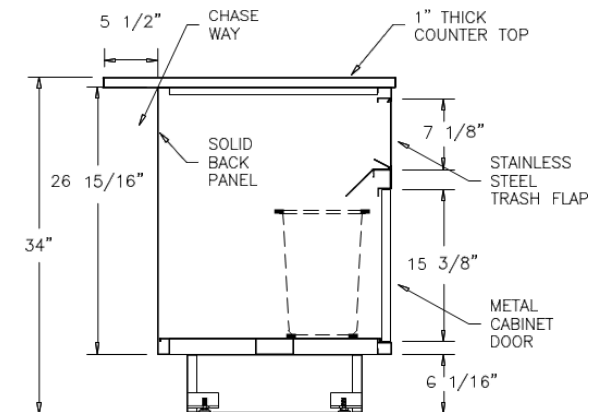
# Food & Beverage Metal Cabinets



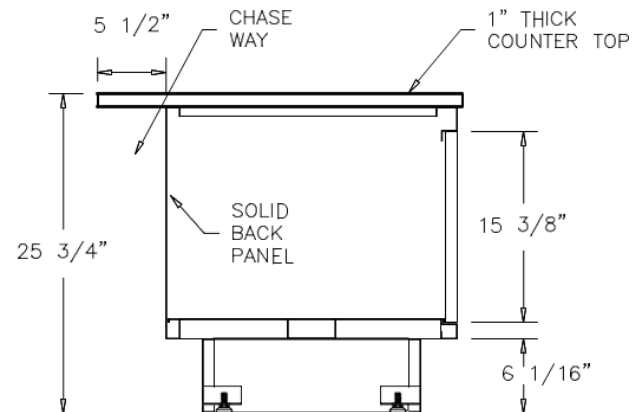
STANDARD PREP UNIT



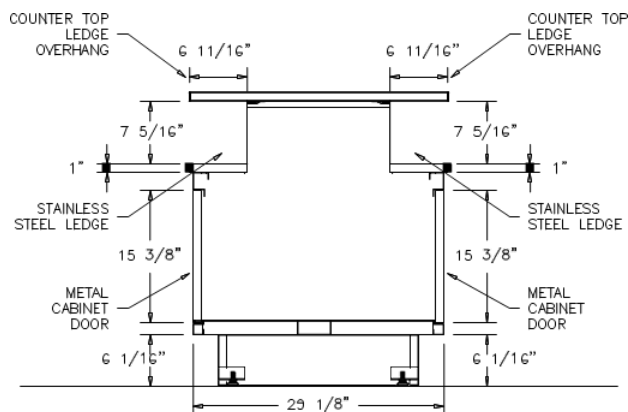
BEVERAGE UNIT



TRASH UNIT



LOW PREP UNIT



CONDIMENT PEDESTAL

## ACTUAL CABINET LENGTHS

NOMINAL LENGTH	ACTUAL LENGTH
12"	11-13/16"
18"	17 -3/4"
24"	23 -5/8"
30"	29 -1/2"
36"	35 -7/16"
48"	47 -1/4"

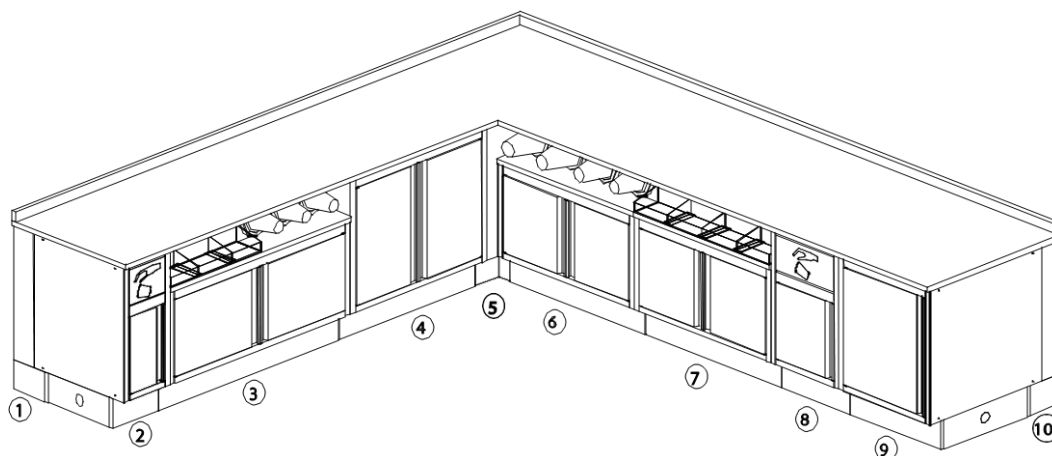
# Food & Beverage Metal Cabinets

---

## DESIGN SERVICE:

With SHOPCO's AutoCAD design service, our design department can create an exciting new Metal Cabinet layout that is customized to fit your store's specific requirements.

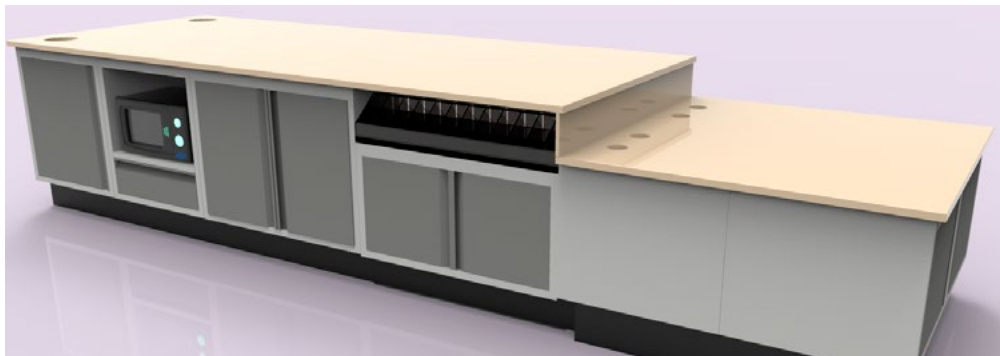
Our design department not only creates entire new store layouts, but can also retrofit your existing store in order to provide a functional design with a contemporary upscale look and feel.



1. End Filler Panel
2. 12" L X 24" D Waste Unit
3. 48" L X 24" D 3 Cup and Condiment Beverage Unit
4. 36" L X 24" D Prep Unit
5. 90 Degree Filler Panel
6. 36" L X 30" D 4 Cup Dispenser Unit
7. 36" L X 30" D Condiment Unit
8. 18" L X 30" D Waste Unit
9. 24" L X 30" D Prep Unit
10. End Filler Panel

# Food & Beverage Metal Cabinets

---





Introducing the latest patent-pending design for Tobacco Fixtures from SHOPCO USA featuring:

- All Metal Frame based on SHOPCO's award winning component system
- Aluminum lighted snap frame header (with lift-up and retractable capability)
- Aluminum lighted/non-lighted internal snap frame flip sign (non-spring movement - for extended service life)
- Innovative Flex-Tray with adjustable dividers for Moist, Vapor, Cigars, CBD, etc.
- 10 Column standard spring loads per two foot fixture (versus 9 Column spring loads in competitive offerings)
- And much more...

Available in Standard Height (84") and Low Profile (58") to meet your stores needs. Standard set-ups are available or build your own configuration. SHOPCO's standard component system makes it easy to build most configurations to fit your stores needs.

SHOPCO's new Tobacco Fixtures are designed for a 20 plus year service life!

SHOPCO has 90+ years of Tobacco Industry experienced team members ready to discuss your Tobacco needs today and to assist you in gaining Merchandising space needs to maximize your Tobacco Manufacturers contracts!



# Tobacco Fixtures

## CUSTOMIZE TO SUIT YOUR NEEDS:

- Based on recent studies, Cigarettes continue to be the reigning champion of in-store sales for Convenience Stores
- About 70% of U.S. Tobacco Sales go through the convenience and gas channel
- Although Cigarettes still reign as champion for in-store sales, other tobacco products (OTP) are gaining momentum
- The top three sellers in the OTP category continue to be Cigars, Electronic Cigarette devices (Vapor), and Smokeless (Moist Snuff, SNUS, and other alternatives)
- 31% of in-store category sales are Cigarettes
- 6.7% of in-store category sales are OTP (and gaining momentum)

SHOPCO has you covered to display all your Tobacco needs! Why not choose a Tobacco Fixture that not only enhances your product merchandising and investment, but also increases usability and functionality.

In addition, SHOPCO provides the all essential HBA (health and beauty aids)/Sundries fixtures in 2', 3' and 4' widths to compliment your back bar set-up. These fixtures come standard with both shelving and peg-board hooks to satisfy all your merchandising requirements or we can customize a layout to suit your needs!



8' STANDARD HEIGHT TOBACCO FIXTURE - 4' CIGARETTES, 2' VAPOR AND 2' MOIST/CIGAR, WITH OPTIONAL INTERNAL FLIP SIGNS AND SIDE PANELS

# Tobacco Fixtures

---

## CABINET WITH DOOR:

SHOPCO's new Tobacco Fixtures are available with no Cabinets or your choice of 3 Cabinet styles: With Doors, Single Deep Drawer or Double Drawers (for standard height Fixtures only):



As displayed above, the Cabinet with Door provides an attractive, crisp aesthetic look to your Tobacco Fixture, with the added benefit of three rows of single pack storage capacity behind the Door (maximum of 24 Cigarette Pack Facings). In addition, if the single pack storage is not a need, the shelves can easily be removed and the cabinet utilized for open storage. The door comes standard as non-lockable, however lockable doors are an available option at minimal cost.



# Tobacco Fixtures

---

## CABINET WITH SINGLE DRAWER:

As displayed below, the Cabinet with Single Drawer provides an attractive, crisp aesthetic look to your Tobacco Fixture, with the added benefit of deep storage and one row of single pack storage capacity behind the Door (maximum of 9 Cigarette Pack Facings). The single drawer comes standard as non-lockable, however a lockable drawer is an available option at minimal cost (plus the drawer is soft close).



9 PACK FACINGS BEHIND THE DRAWER DOOR

## CABINET WITH DOUBLE DRAWER:

As displayed below, the Cabinet with Double Drawers provide an attractive, crisp aesthetic look to your Tobacco Fixture, with the added Benefit of double storage capacity to maintain separate storage areas for differentiated products. The double drawers come standard as non-lockable, however lockable drawers are an available option at minimal cost (plus the drawers are soft close).



# Tobacco Fixtures

---

## PRODUCT STORAGE CAPACITY:

In addition to the storage capacity provided by Tobacco Fixture Cabinetry, storage capacity is available behind the optional interior flip signs from SHOPCO or behind the flip signs provided by your Tobacco Representative. The key benefit to the SHOPCO interior flip sign is the use of earth magnets to maintain the sign in a 90 degree closed position (verses competitive spring capacity signs).

Why is this a benefit? First, springs tend to wear out over time and second, when competitive spring hinged flip signs are utilized, the individual loading product behind the sign must utilize one hand to hold the sign down and use the other hand to load the product. SHOPCO's internal flips signs have the flexibility to lift all the way downward to a 90 degree fixed position to allow hands free maintenance of the sign while loading the product. When completed, simply lift the sign back in place to the 90 degree closed position and the strong earth magnets holds the sign in place.



INTERIOR FLIP SIGNS UP



INTERIOR FLIP SIGNS DOWN

# Tobacco Fixtures

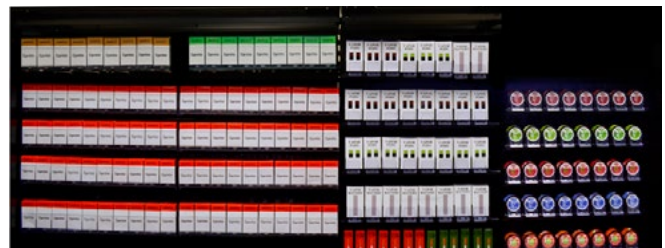
---

Additional product storage capacity for SHOPCO's new Tobacco Fixture is available behind the Upper Header Signs (both 2' and 4'). The key benefit to the SHOPCO Upper Header Sign is the ability to lift the sign and slide backward to a retractable position (a resting position).

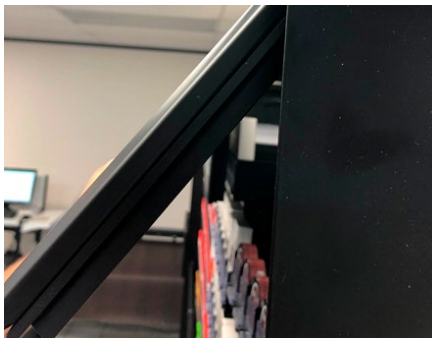
Why is this a benefit? Most competitive Tobacco Fixtures do not have storage capacity behind the Upper Header Signs, however when these configurations are made available, none have the capability to lift up and retract backward. By designing the Upper Header Signs to lift up and retract backward to a resting position, the individual loading the product behind the sign has the flexibility of being hands free from the sign (verses holding the sign in an upward position) to load product. When complete, simply pull the sign outward and lower back into position.



UPPER HEADER SIGNS DOWN



UPPER HEADER SIGNS UP AND RETRACTED



LIFTING THE UPPER HEADER SIGN



SLIDING BACK/RETRACTING THE UPPER  
HEADER SIGN

# Tobacco Fixtures

---

## SPRINGLOAD MERCHANDISING SOLUTIONS:

SHOPCO's Innovative Merchandising Solutions are second to none! In either standard fixture set-ups or customizations, we provide pushers for all your merchandising needs. A key benefit to SHOPCO's single and 10-Column Pushers is the ability to slide the pushers all the way to the back, slightly tilt forward, and the pusher will lock into place (see all pics).

Why is this a benefit? When traditionally loading product into the pushers, individuals will typically load two packs at a time, as they use the pack to push the spring loaded pusher back to fill the slot. When our pushers are locked into place, both hands can be utilized to load the column without pushing the pusher backward (allowing quicker load time and eliminating possible damage to product). When loading is complete, simply touch the pusher and it retracts back into place against the product. Another benefit to SHOPCO's Merchandising Solutions is the newly designed 10-Column Fixed Tray set. Most 2' Fixtures come standard with 9 pack facings. With the 10-Column Fixed Tray Pusher set, you receive 10 Pack facings per row verses 9.

Why is this a benefit? This will allow increased merchandising space across the entire dimension of your Tobacco fixture and open up greater possibilities to contract with additional Tobacco companies (based on increased product facings).



STANDARD SINGLE PUSHER



SMALL SINGLE VAPOR PUSHER

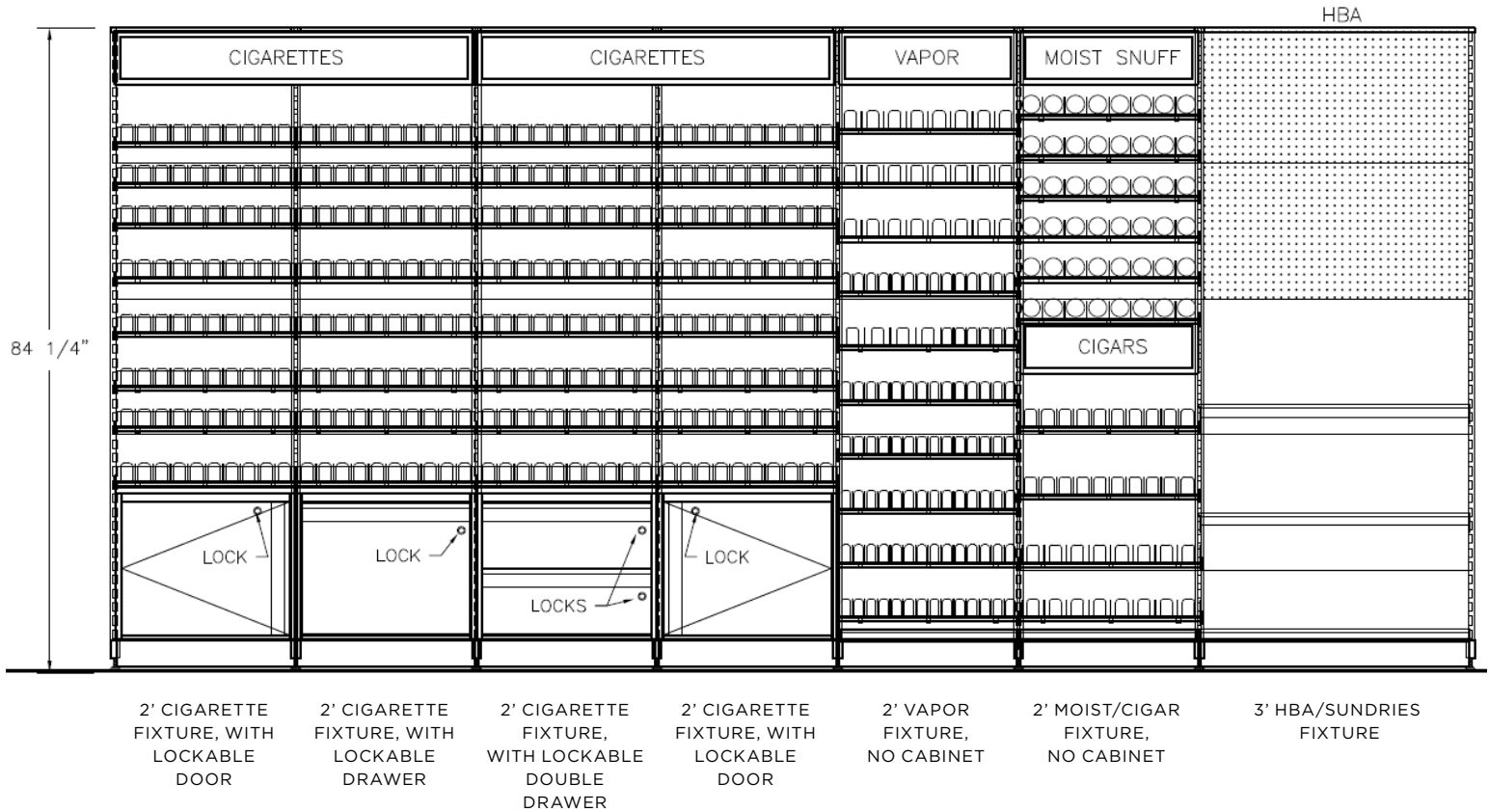


ROUND SINGLE CAN PUSHER

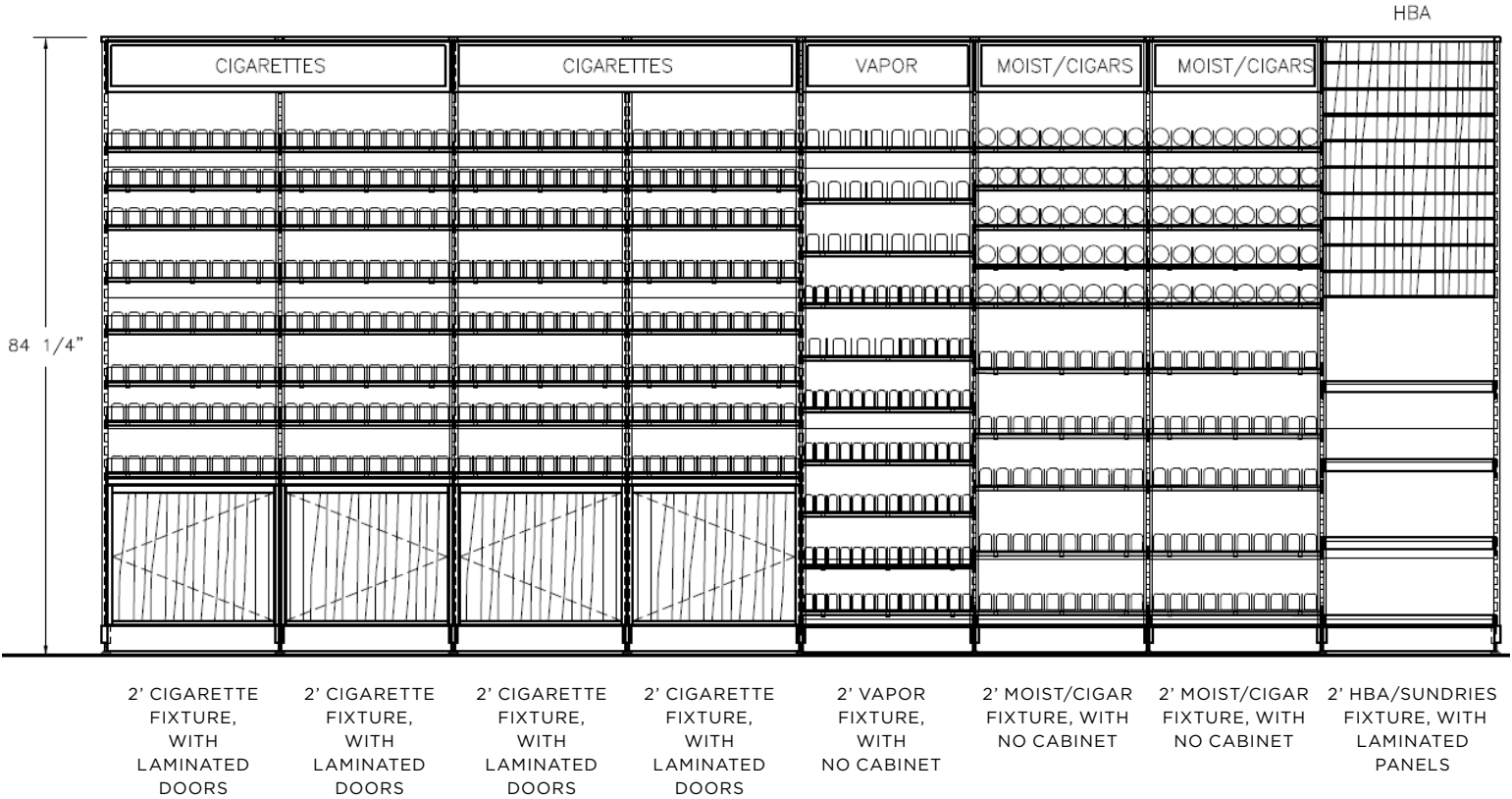


FIXED 10-COLUMN PUSHER SET

# Tobacco Fixtures



# Tobacco Fixtures





# Tobacco Fixtures

---



# Tobacco Fixtures

---



# Tobacco Fixtures







SHOPCO's all metal Euro Gondola Shelving comes in a variety of lengths, depths and heights to meet all of your retail merchandising needs. This shelving system is stocked in black, beige and white. SHOPCO Gondola Shelving can also be powder-coated to custom colors for various design requirements. Choose from all metal back panels either smooth, metal pegboard, metal slat wall and heavy duty metal mini-slat wall panels. Traditional and curved gondolas available in stock and ready to ship!

Our unique gondola shelving system is used in a variety of retail applications including convenience stores, supermarkets, and grocery stores. SHOPCO gondolas are adaptable to almost any type of store due to its modular design. SHOPCO Gondola Shelving can help insure that your store is uniform and distinguishable by giving store owners the ability to brand their merchandising systems.

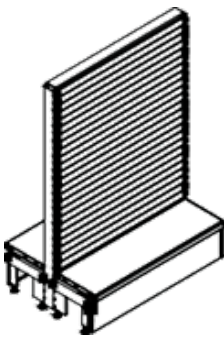
If your convenience store, supermarket, or grocery store just needs a remodel, SHOPCO is here to help! We can assist you with your store layout and design with our CAD Services or with our vast network of certified installers. If your gondola shelving just needs to be spruced up, we carry a variety of replacement parts, including peg hooks, shelves, back panels, front fences and more, in stock and ready to ship.

# SHOPCO Euro Gondola Systems

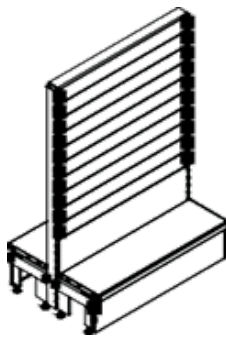
---

## CHOOSE FROM A VARIETY OF STYLES FROM TRADITIONAL TO CURVED SYSTEMS!

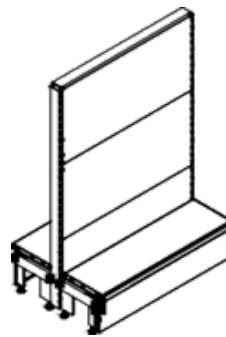
High and low bases available (pictured below with high bases)



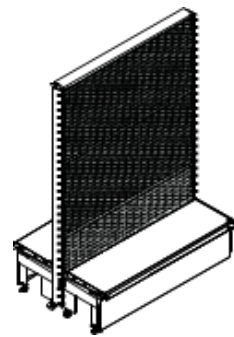
STRAIGHT GONDOLA WITH  
MINI-SLAT WALL PANELS



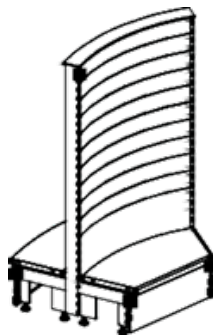
STRAIGHT GONDOLA WITH  
SLAT WALL PANELS



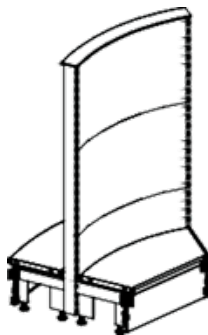
STRAIGHT GONDOLA WITH  
SMOOTH PANELS



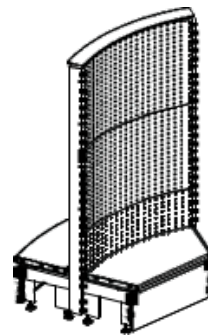
STRAIGHT GONDOLA WITH  
PEGBOARD PANELS



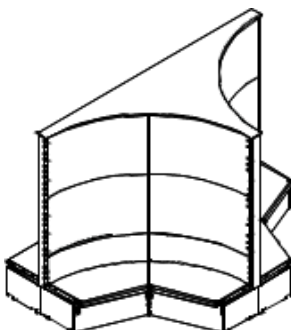
CURVED GONDOLA WITH  
SLAT WALL PANELS



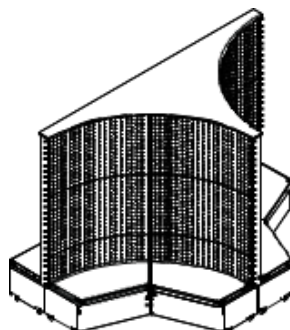
CURVED GONDOLA WITH  
SMOOTH PANELS



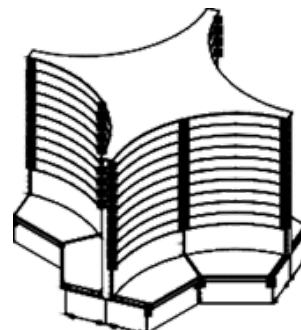
CURVED GONDOLA WITH  
PEGBOARD PANELS



SPLIT CURVE GONDOLA  
WITH SMOOTH PANELS



SPLIT CURVE GONDOLA  
WITH PEGBOARD PANELS

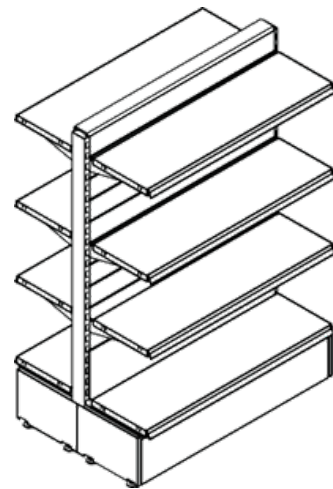
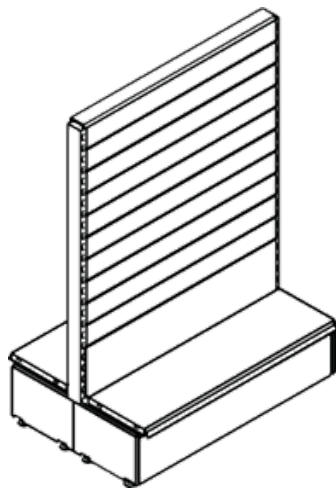
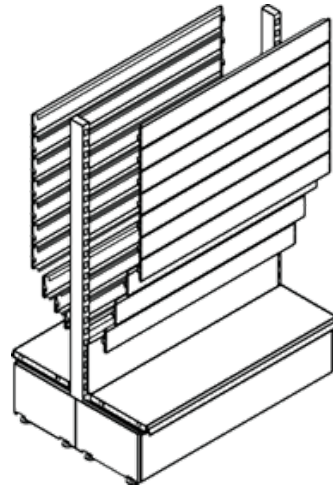
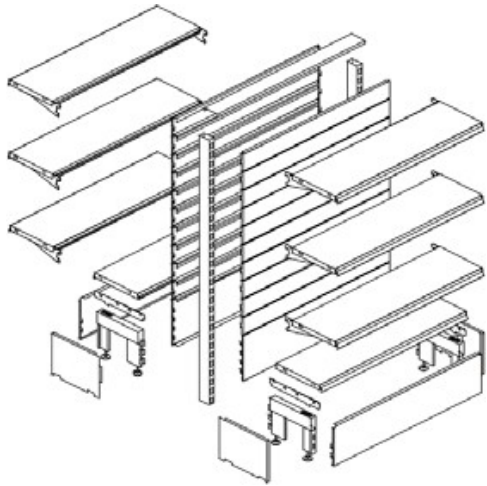


CLOVER LEAF GONDOLA  
WITH SLAT WALL PANELS

# SHOPCO Euro Gondola Systems

---

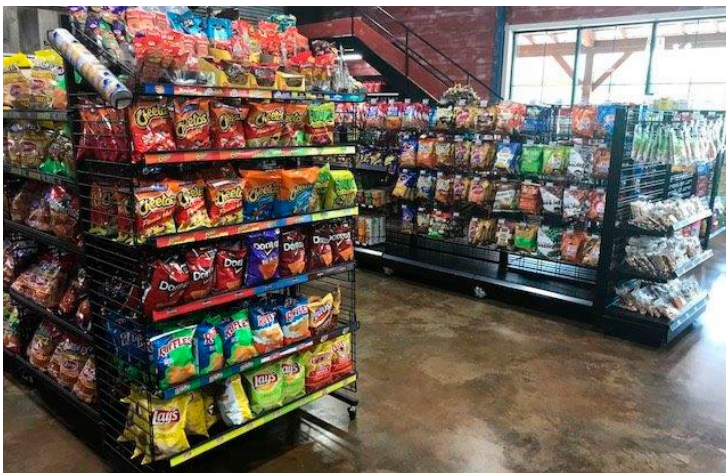
**LIMITLESS DESIGN OPPORTUNITIES!**





# SHOPCO Euro Gondola Systems

---







Madix Gondola Shelving is an industry standard that is compatible with many domestic shelving systems, giving you the option of buying Madix shelves on a quick ship basis for your existing domestic shelving systems. It also allows you to order new Madix gondolas from SHOPCO while using existing shelves from your current inventory.

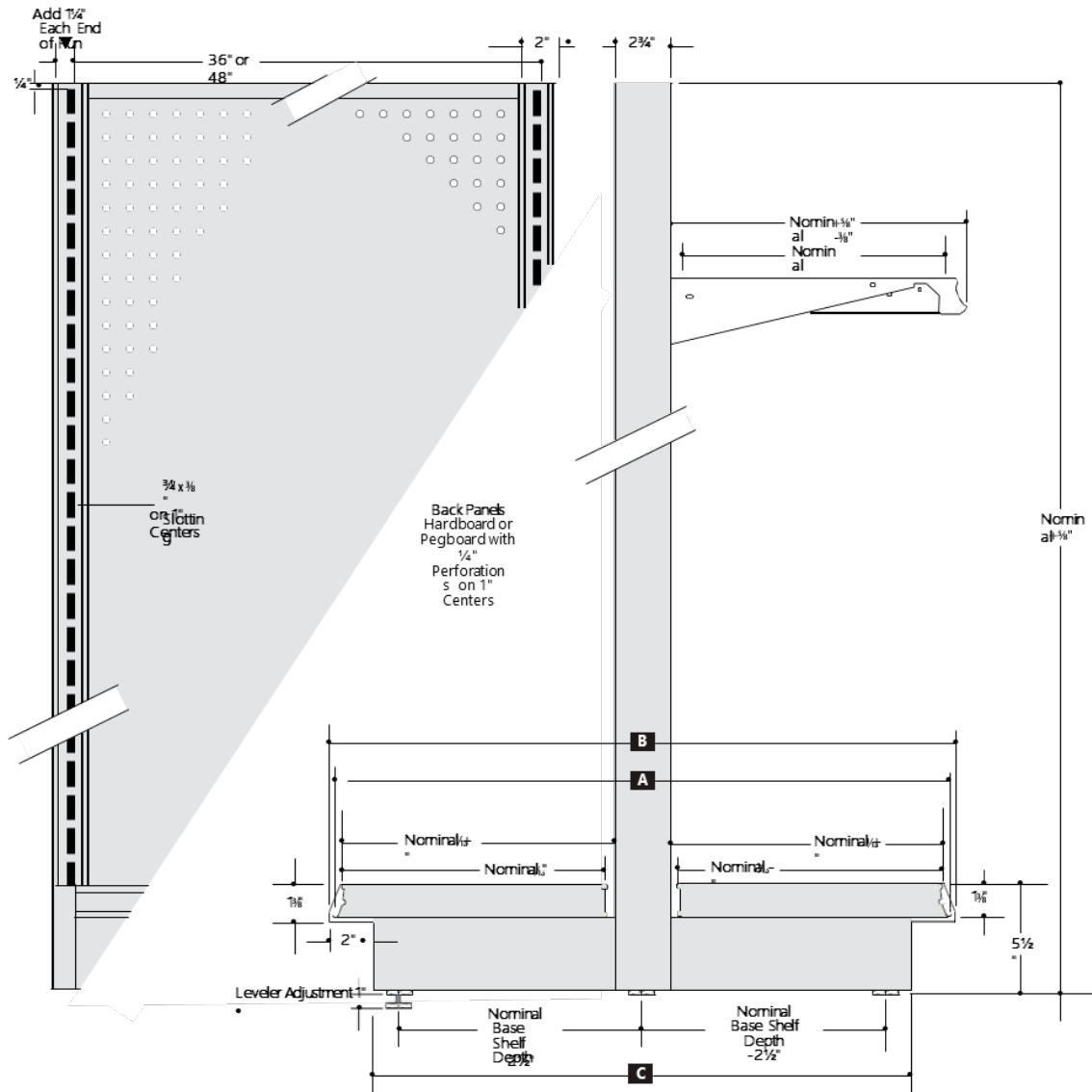
Madix store fixtures are manufactured in a highly automated facility with the most modern technology to create store fixtures that are as cost efficient as they are functional. Uprights are engineered of heavy gauge steel with a one inch slot pattern for adjustability and conformity to many other manufacturer's shelves, as well as vendor racks.

The five inch high foot is designed for ease of installation and structural integrity with levelers for use on all types of floors. The high density hardboard back panels fit flush with the front of the upright and are available in two colors (in stock in Black and Sahara). Madix Gondolas and wall units are stocked in 3-ft and 4-ft lengths, 48-in, 54-in, 60-in, 72-in, 84-in, and 96-in heights, with base decks from 12-in, 14-in, 16-in, 18-in and 22-in depths. Installation and assembly of Madix Gondolas or Wall Shelving in your store is easy.

Black and Sahara (beige) in inventory.

SHOPCO was chosen by Madix to be one of only a select few to be a master distributors of Madix products nationally!

# Madix Gondola Systems



- Nominal Upright Heights  
36" (914 mm) thru 96" (2438 mm)  
in 6" (152 mm) increments
- Nominal Base Shelf Depths  
12" (305 mm) thru 30" (762 mm)  
in 2" (51 mm) increments
- Nominal Upper Shelf Depths  
8" (203 mm) thru 30" (762 mm)  
in 2" (51 mm) increments

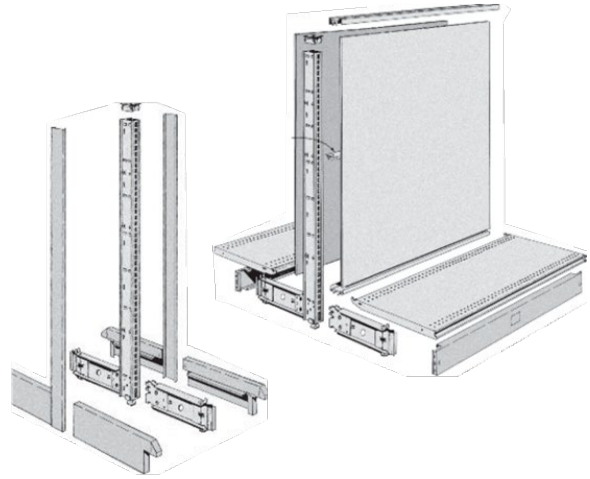
Nominal Base Shelf Depth	plus 3" plus	Nominal Base Shelf Depth	equals	Nominal Base Width
Bottom of TagMold to Bottom of Tag Mold	<b>A</b>	equals	Nominal Base Width	minus 1/4"
Front of Base End Cover to Front of Base End Cover	<b>B</b>	equals	Nominal Base Width	plus 7/8"
	<b>C</b>	equals		minus 3 1/4"

# Madix Gondola Systems

## GONDOLA PEGBOARD - STARTER

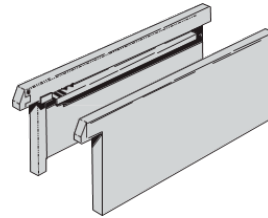
Length	Height	Depth
3'	48"	12", 14", 16", 18" and 22"
4'	48"	12", 14", 16", 18" and 22"
3'	54"	12", 14", 16", 18" and 22"
4'	54"	12", 14", 16", 18" and 22"
3'	60"	12", 14", 16", 18" and 22"
4'	60"	12", 14", 16", 18" and 22"
3'	72"	12", 14", 16", 18" and 22"
4'	72"	12", 14", 16", 18" and 22"

\* SIDE BASE PANELS - ORDERED SEPARATELY



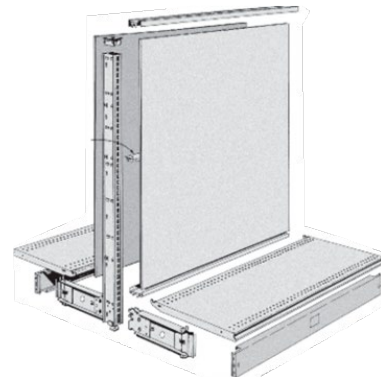
## GONDOLA - SIDE BASE PANELS FOR STARTER

Depth	Height
10"	6"
12"	6"
14"	6"
16"	6"
18"	6"
22"	6"



## GONDOLA PEGBOARD - ADD-ON

Length	Height	Depth
3'	48"	12", 14", 16", 18" and 22"
4'	48"	12", 14", 16", 18" and 22"
3'	54"	12", 14", 16", 18" and 22"
4'	54"	12", 14", 16", 18" and 22"
3'	60"	12", 14", 16", 18" and 22"
4'	60"	12", 14", 16", 18" and 22"
3'	72"	12", 14", 16", 18" and 22"
4'	72"	12", 14", 16", 18" and 22"



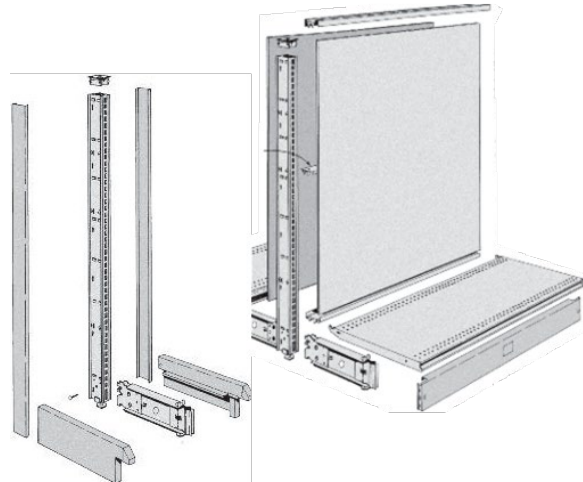
# Madix Gondola Systems

---

## END CAP - PEGBOARD - STARTER

Length	Height	Depth
3'	48"	12", 14" 16" 18" and 22"
3'	54"	12", 14" 16" 18" and 22"
3'	60"	12", 14" 16" 18" and 22"
3'	72"	12", 14" 16" 18" and 22"

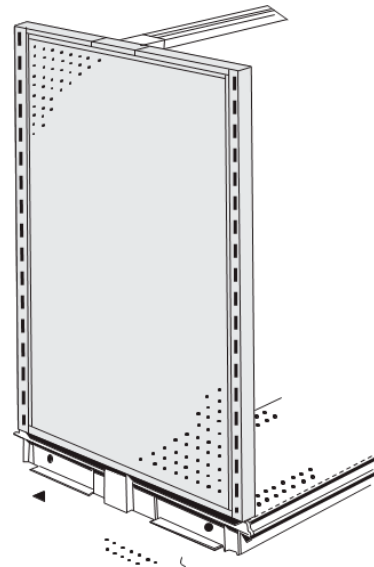
BLACK OR SAHARA (BEIGE)



## END FRAME - PEGBOARD - STARTER

Length	Height	Depth
3'	54"	n/a
3'	72"	n/a

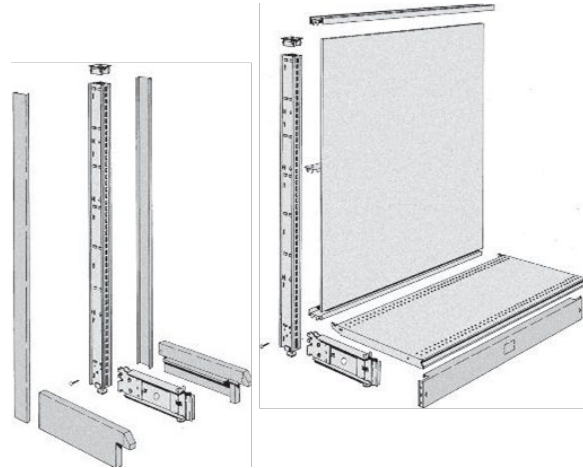
BLACK OR SAHARA (BEIGE)



# Madix Gondola Systems

## WALL UNIT - PEGBOARD - STARTER PEGBOARD FRONT - OPEN BACK

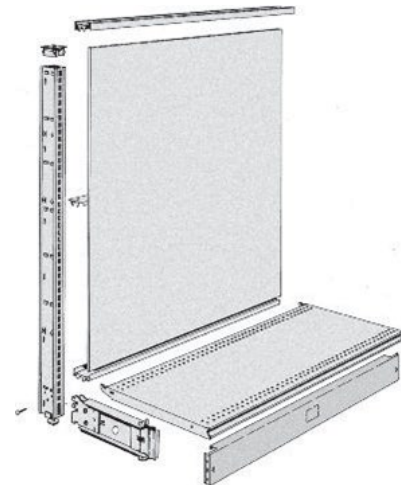
Length	Height	Depth
3'	48"	12", 14", 16", 18" and 22"
4'	48"	12", 14", 16", 18" and 22"
3'	54"	12", 14", 16", 18" and 22"
4'	54"	12", 14", 16", 18" and 22"
3'	60"	12", 14", 16", 18" and 22"
4'	60"	12", 14", 16", 18" and 22"
3'	72"	12", 14", 16", 18" and 22"
4'	72"	12", 14", 16", 18" and 22"
3'	84"	16" 18" and 22"
4'	84"	16" 18" and 22"
3'	96"	16" 18" and 22"
4'	96"	16" 18" and 22"



BLACK OR SAHARA (BEIGE)

## WALL UNIT - PEGBOARD - ADD-ON PEGBOARD FRONT - OPEN BACK

Length	Height	Depth
3'	48"	12", 14", 16", 18" and 22"
4'	48"	12", 14", 16", 18" and 22"
3'	54"	12", 14", 16", 18" and 22"
4'	54"	12", 14", 16", 18" and 22"
3'	60"	12", 14", 16", 18" and 22"
4'	60"	12", 14", 16", 18" and 22"
3'	72"	12", 14", 16", 18" and 22"
4'	72"	12", 14", 16", 18" and 22"
3'	84"	16" 18" and 22"
4'	84"	16" 18" and 22"
3'	96"	16" 18" and 22"
4'	96"	16" 18" and 22"



BLACK OR SAHARA (BEIGE)

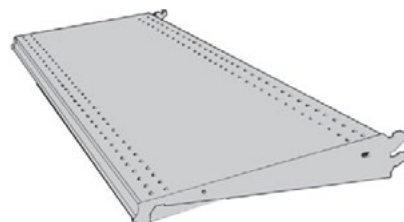
# Madix Gondola Systems

---

## SOLID SHELVES WITH BRACKETS

Length	Depth
3'	8", 10", 12", 14" 16" 18", 20" and 22"
4'	8", 10", 12", 14" 16" 18", 20" and 22"

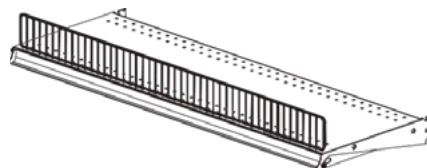
BLACK OR SAHARA (BEIGE)



## WIRE FRONT FENCE

Length	Depth
3'	4"
4'	4"

BLACK OR SAHARA (BEIGE)



## STYRENE FRONT FENCE

Length	Depth
3'	3"
4'	3"

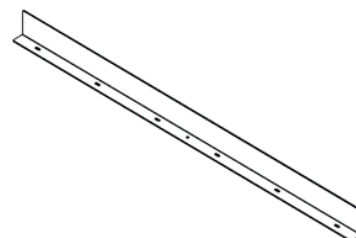
CLEAR



## SHELF RETAINER FOR SOLID SHELF

Length	Depth
3'	1"
4'	1"

BLACK OR SAHARA (BEIGE)

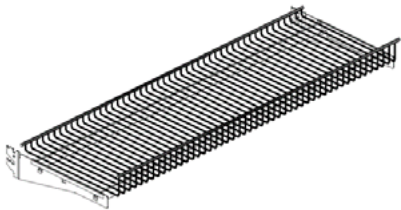


# Madix Gondola Systems

**WIRE SHELVES WITH BRACKETS**

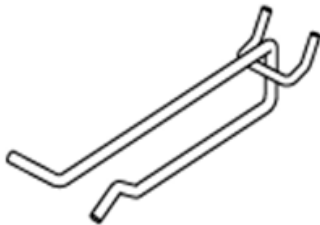
Length	Depth
3'	10", 12", 14" and 16"
4'	12", 14" and 16"

BLACK ONLY



**PEG HOOK - FLIP SCAN**

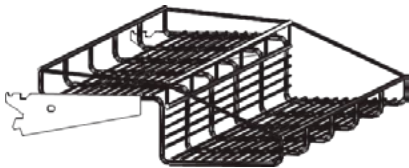
Length	Color
4"	Black or Galvanized
6"	Black or Galvanized
8"	Black or Galvanized
11"	Black or Galvanized



**2-TIER PASTRY SHELF**

Length
3'

BLACK OR SAHARA (BEIGE)

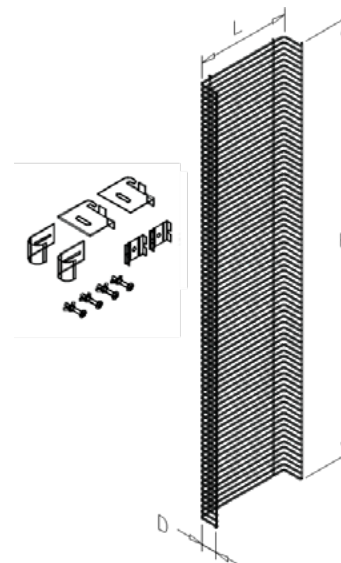




# Madix Gondola Systems

## POWER WING

- Attaches to end cap units
- 14.5"L x 4.5"D x 36"H
- Standard stock colors are Black and Sahara (beige)
- Includes mounting clips and hardware



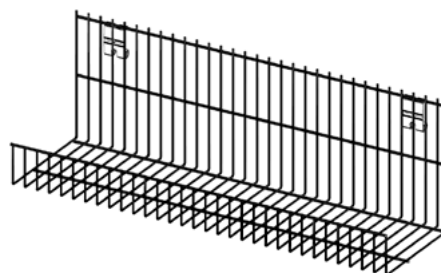
## POWER WING MERCHANDISER (ATTACHES TO END CAP UNIT)

Length	Depth	Height
14.5"	4.5"	36"

## POWER WING SHELF

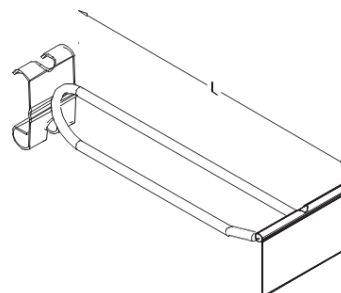
Length	Depth	Height
13"	4"	5"

Standard stock colors are Black and Sahara (beige)



## POWER WING HOOK

- Length 4"
- Standard stock color is galvanized
- Includes label holder



# Madix Gondola Systems

---



# Madix Gondola Systems

---





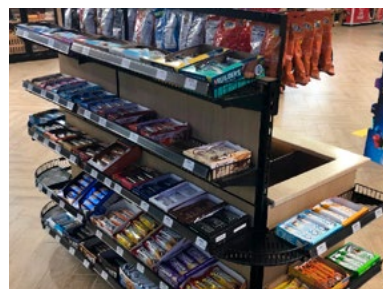


SHOPCO provides a vast assortment of Specialty Fixtures to meet your everyday merchandising needs. Can't find what you're looking for? If not, please contact your SHOPCO Representative to discuss your ideas and let us design a product to fit your specific needs!

## BEER TUBS:



## ORCHARD BINS:



# Specialty Fixtures

## BAKERY CASES:



COUNTER TOP



COUNTER TOP



# Specialty Fixtures

---

## 4-WAY MERCHANDISER:



# Specialty Fixtures

---

## WINE DISPLAYS:



## EATING BARS:





# Specialty Fixtures

---

## WALL COVERINGS:



## CUSTOM SHELVING MERCHANDISERS:



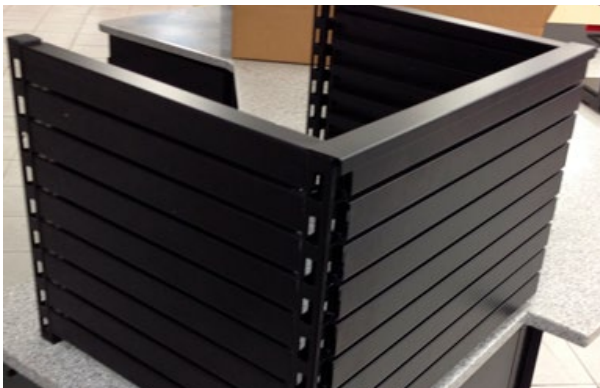
# Specialty Fixtures

---

## CUSTOM WASTE RECEPTACLES:



## REGISTER SHROUDS (LAMINATED OR NON-LAMINATED):





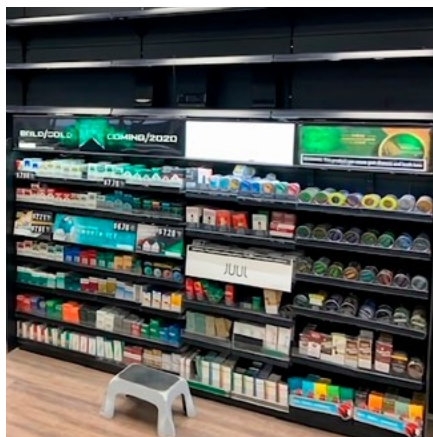
# Specialty Fixtures

---

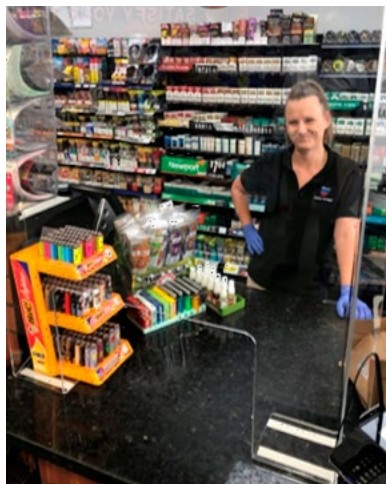
## MULTI-VENDOR DISPLAYS (POWERWINGS):



## CUSTOM SPACE OPTIMIZATION



## POINT OF SALE SHIELDS:



## FUEL VALET:

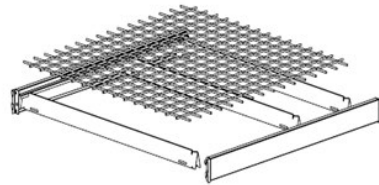


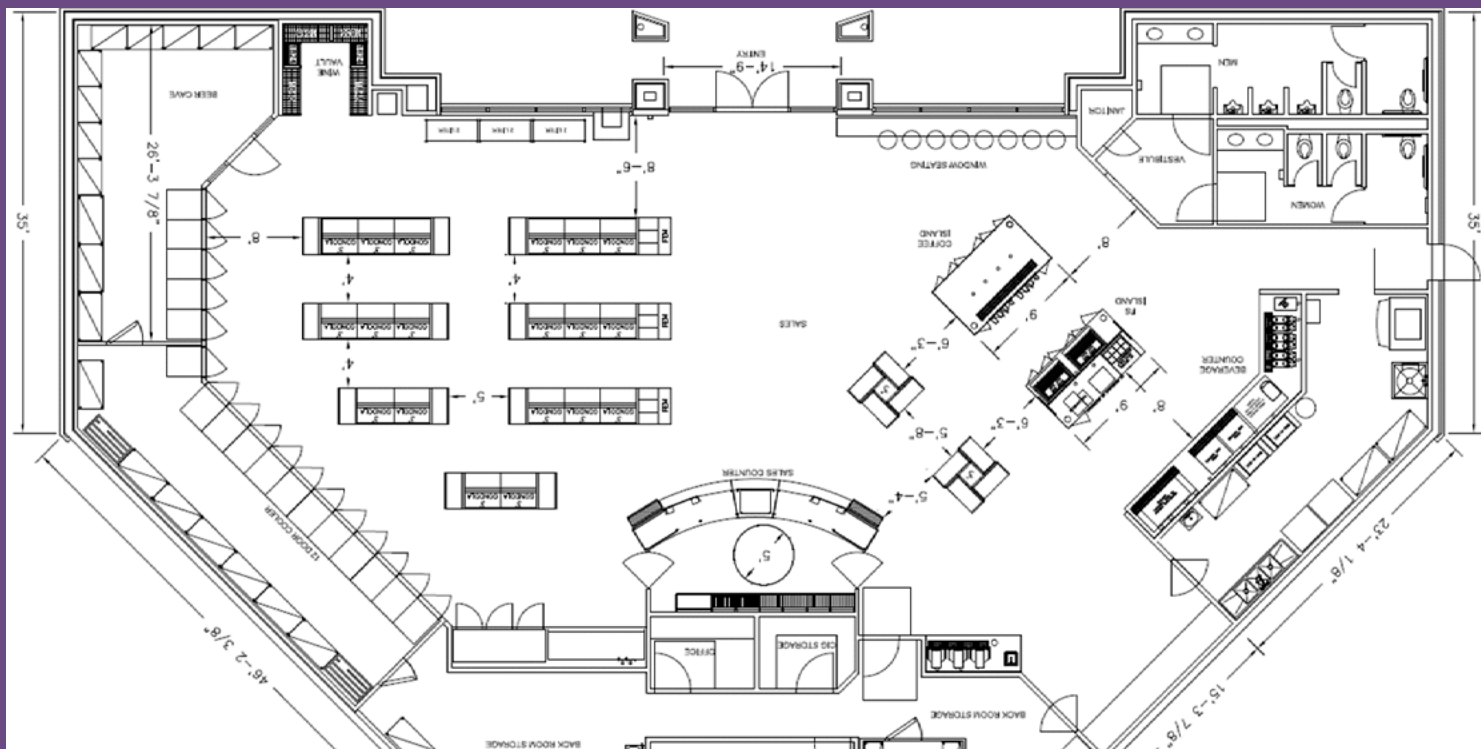
# Specialty Fixtures

---

## COOLER AND BEER CAVE SHELVING:

The Madix Wide-Span system consists of frames, beams, wire grid decks and deck supports fabricated from heavy-gauge steel with a Blue-Gray or Sahara powder coat finish to withstand the cooler environment. The sections are 60" high by 24" deep and come in 48", 72" and 96" lengths. Each shelf is capable of holding up to 1,600 lbs. of product and can be adjusted in 2" vertical increments. All frames have 10,000 lb. load capacity.





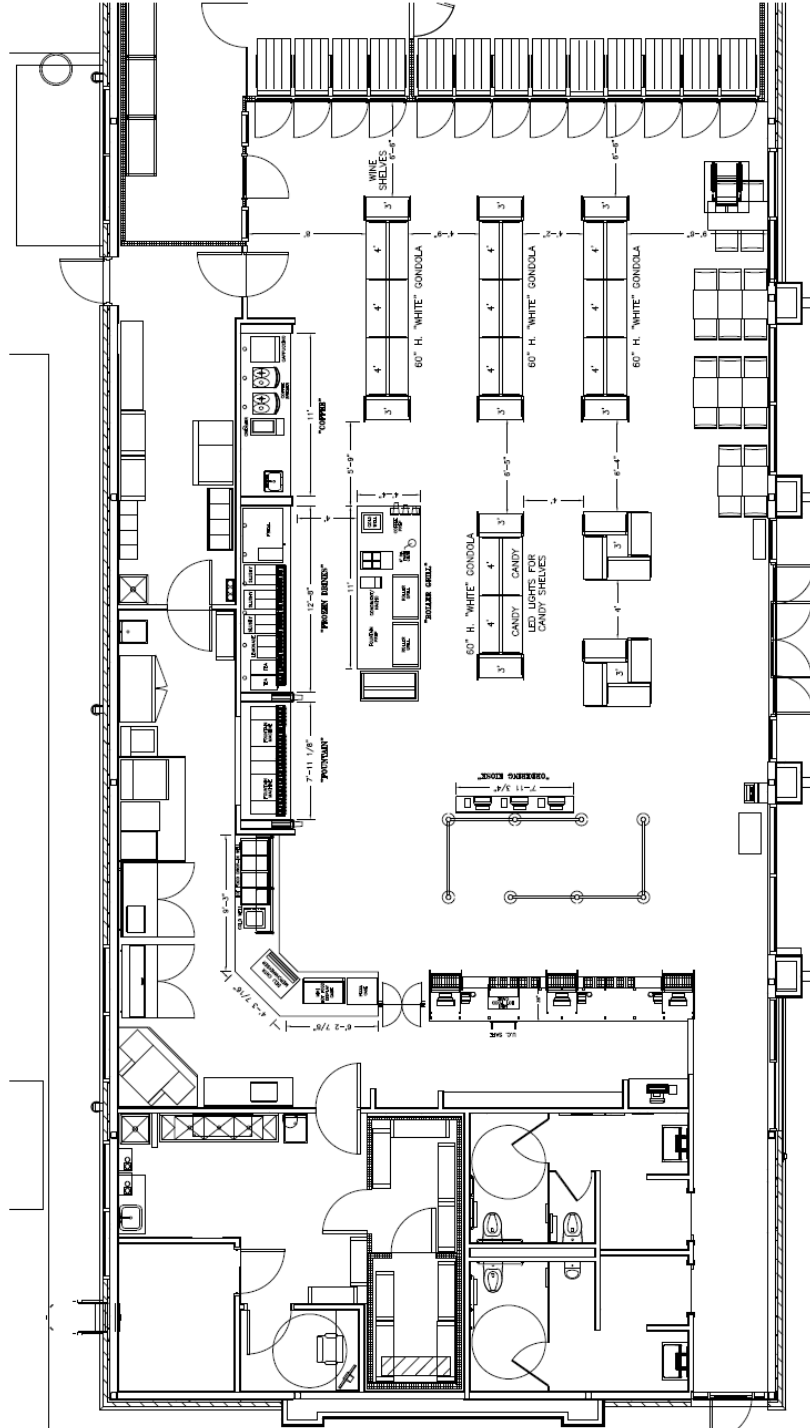
With SHOPCO's AutoCAD design service, our design department can create an exciting new Metal Cabinet layout that is customized to fit your store's specific requirements.

Our design department not only creates entire new store layouts, but can also retrofit your existing store in order to provide a functional design with a contemporary upscale look and feel.

Take advantage of SHOPCO's CAD Design Service today! Call to start creating your customized merchandising solutions with one of our design experts. Send your electronic architectural drawing to [designcenter@shopcousa.com](mailto:designcenter@shopcousa.com).

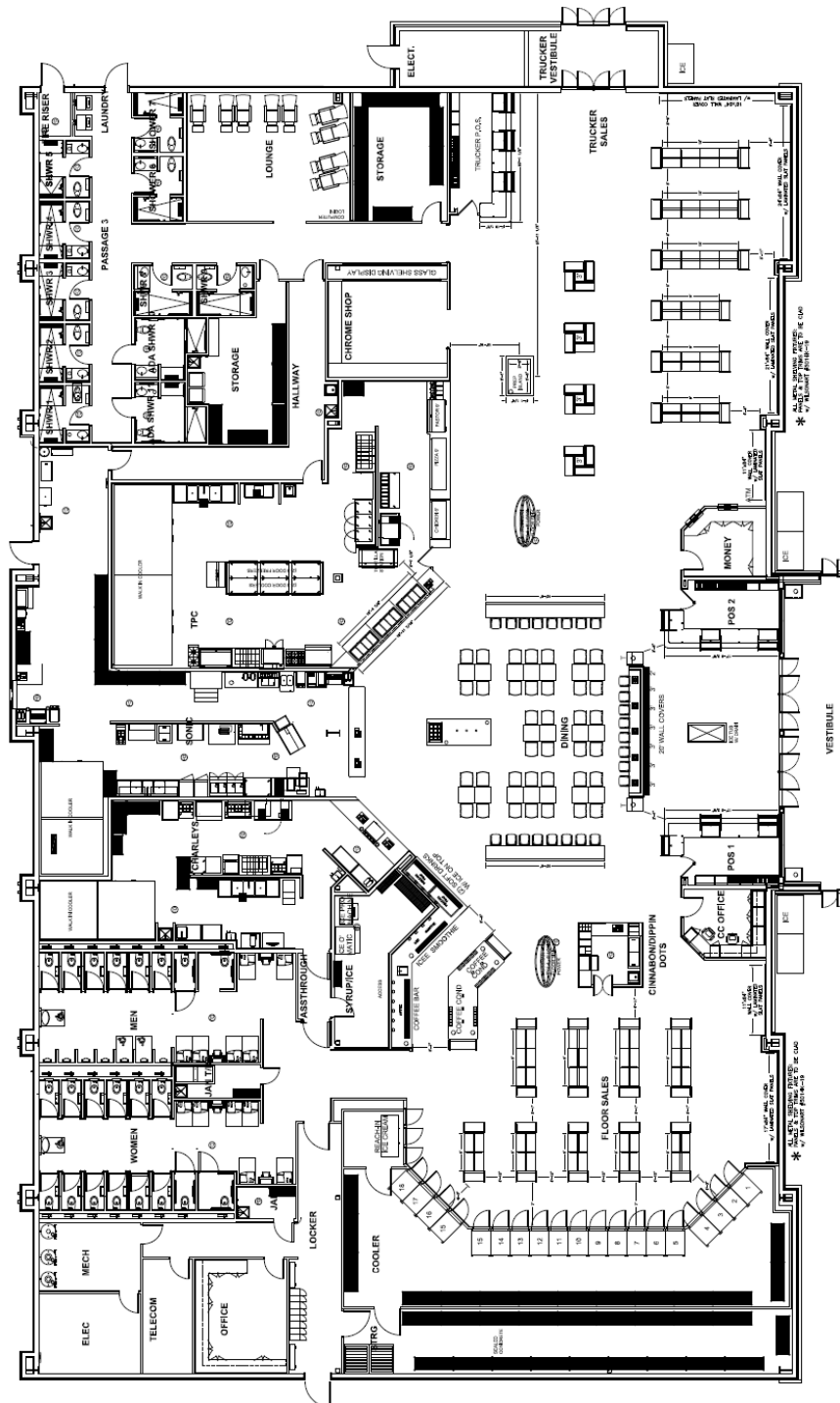


## Design Services

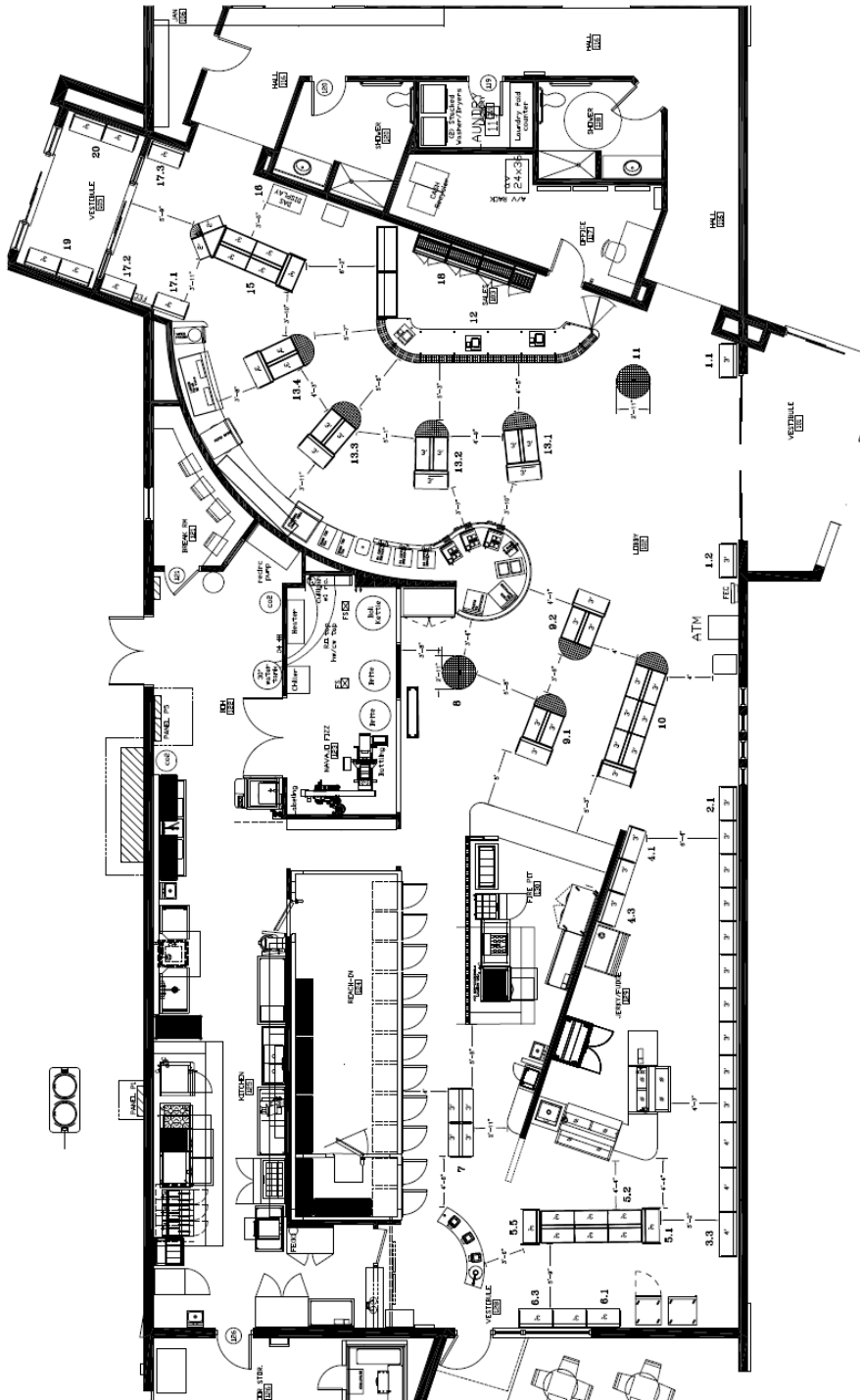




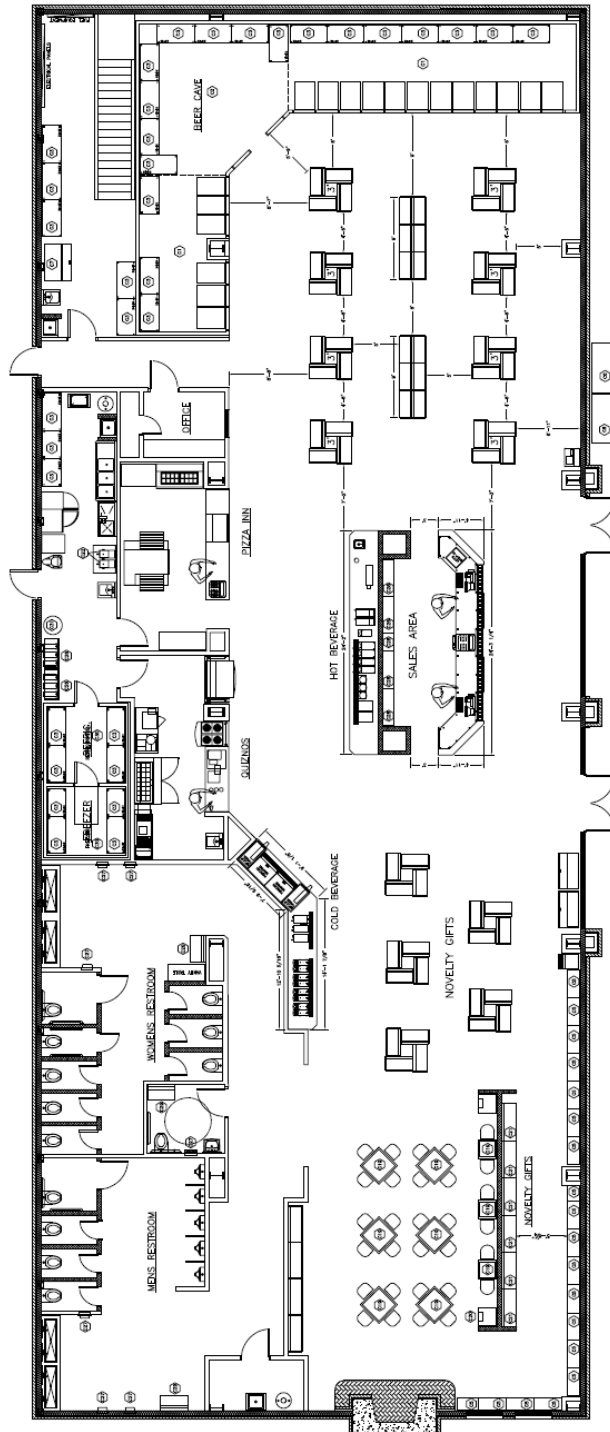
# Design Services



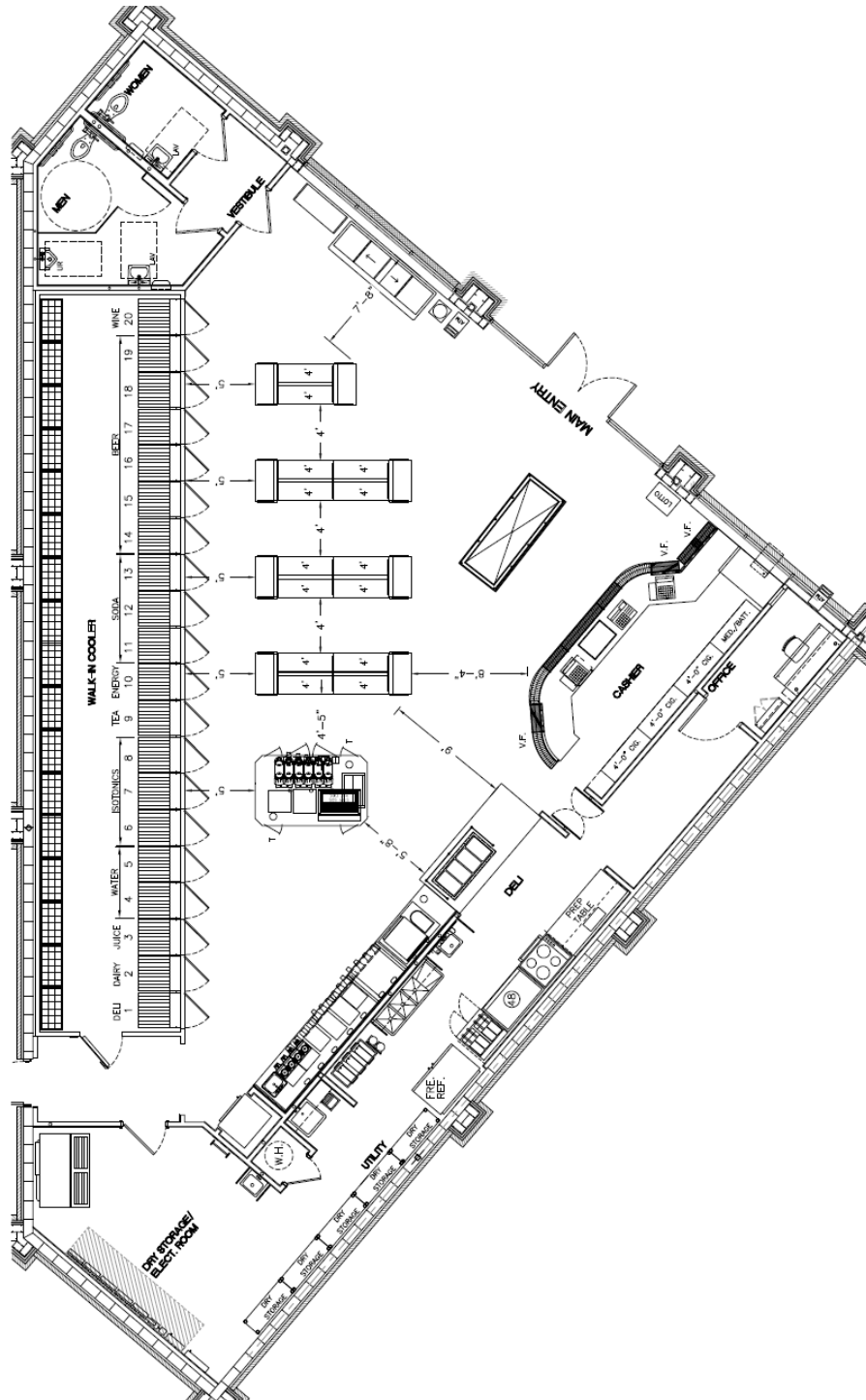
# Design Services



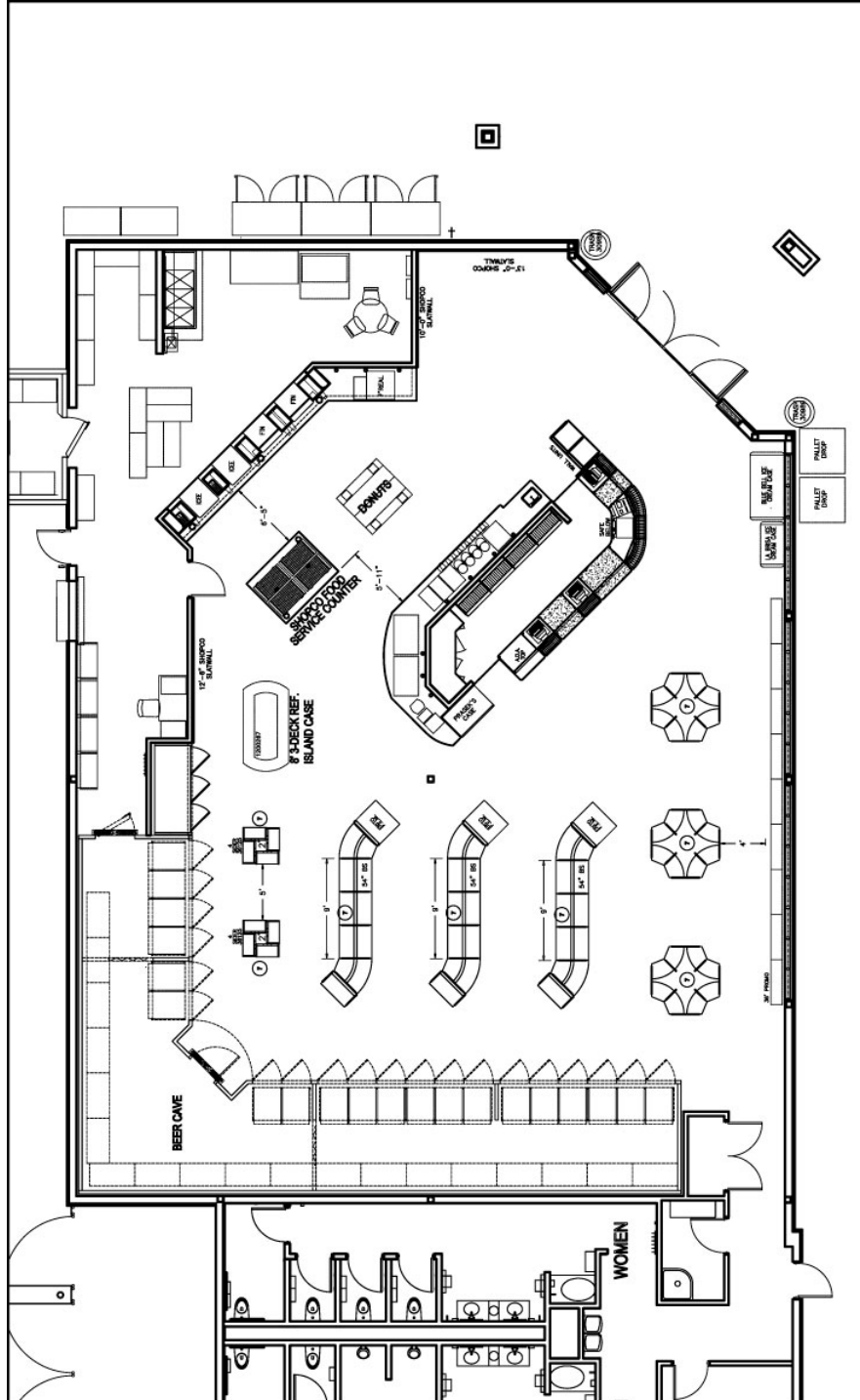
# Design Services



## Design Services



## Design Services



# RAL Color Choices

 RAL 100 49/15200	 RAL 1019 49/13660 • 8	 RAL 200 49/24340	 RAL 304 49/31080	 RAL 400 49/32280	 RAL 504 49/42320
 RAL 1001 49/15190 • 8	 RAL 1020 49/22500 • 300	 RAL 209 49/24360	 RAL 305 49/33670	 RAL 409 49/34740	 RAL 505 49/42330
 RAL 1002 49/22590 • 300	 RAL 101 49/22280	 RAL 200 49/24520	 RAL 306 49/31980	 RAL 400 49/40490	 RAL 5017 49/40760 • 30
 RAL 103 49/22580	 RAL 1023 49/22490 • 300023	 RAL 201 49/24580	 RAL 307 49/31060	 RAL 500 49/42200	 RAL 5018 49/41140 • 30
 RAL 104 49/22570	 RAL 1024 49/22480 • 300024	 RAL 202 49/24690	 RAL 308 49/31050	 RAL 501 49/42210	 RAL 5019 49/42360 • 300
 RAL 105 49/22560	 RAL 107 49/22470	 RAL 300 49/33120	 RAL 300 49/31040	 RAL 502 49/42220	 RAL 5020 49/42270 • 300
 RAL 106 49/22550	 RAL 108 49/22460	 RAL 301 49/31120	 RAL 302 49/33700	 RAL 503 49/42230	 RAL 5021 49/41190 • 30
 RAL 107 49/22540	 RAL 102 49/22450	 RAL 302 49/31110	 RAL 307 49/33660	 RAL 5004 49/42240 • 390004	 RAL 502 49/42390
 RAL 101 49/15180	 RAL 108 49/22240	 RAL 303 49/31100	 RAL 304 49/34730	 RAL 505 49/43190	 RAL 503 49/44650
 RAL 102 49/22530	 RAL 104 49/23910	 RAL 304 49/33900	 RAL 401 49/43160	 RAL 5007 49/42250 • 30	 RAL 504 49/44660
 RAL 1013 49/11280 • 3	 RAL 107 49/20096	 RAL 305 49/31900	 RAL 402 49/31030	 RAL 5008 49/42260 • 3008	 RAL 6000 49/53160 • 3
 RAL 1014 49/15170 • 8	 RAL 200 49/24570	 RAL 307 49/31910	 RAL 403 49/32270	 RAL 509 49/42270	 RAL 6001 49/52900 • 35
 RAL 1015 49/15320 • 8	 RAL 201 49/24560	 RAL 309 49/31920	 RAL 404 49/31020	 RAL 500 49/42280	 RAL 602 49/52890
 RAL 1016 49/22520 • 30	 RAL 202 49/24550	 RAL 301 49/31090	 RAL 405 49/42780	 RAL 5011 49/43180 • 30	 RAL 6003 49/52880 • 30
 RAL 107 49/22510	 RAL 203 49/24540	 RAL 3012 49/31940 • 30	 RAL 406 49/32090	 RAL 502 49/43170	 RAL 6004 49/50980 • 30
 RAL 108 49/21830	 RAL 204 49/24530	 RAL 306 49/31950	 RAL 407 49/32540	 RAL 5013 49/42310 • 30	 RAL 6005 49/50670 • 3



# RAL Color Choices

 RAL 6006 49/52870 • 3	 RAL 6022 49/52890 • 32	 RAL 7006 49/72580 • 3	 RAL 7030 49/72890 • 37	 RAL 7045 49/77890 • 3	 RAL 8019 49/65490 • 3
 RAL 6007 49/52860 • 3	 RAL 6034 49/52680	 RAL 7008 49/72570	 RAL 7031 49/72520 • 3	 RAL 7046 49/72010 • 32	 RAL 8022 49/63080 • 32
 RAL 6008 49/53240 • 300	 RAL 6035 49/52670	 RAL 7009 49/72770 • 3	 RAL 7032 49/72910 • 3	 RAL 7047 49/72020 • 37	 RAL 8023 49/66070 • 3
 RAL 6009 49/52840 • 300	 RAL 6026 49/52680 • 8	 RAL 7010 49/72580 • 3	 RAL 7033 49/72510 • 3	 RAL 8000 49/66170	 RAL 8024 49/66060 • 3
 RAL 6010 49/52830 • 300	 RAL 6027 49/50990 • 37	 RAL 7011 49/72790 • 3	 RAL 7034 49/72500	 RAL 8001 49/66160 • 3	 RAL 8025 49/66050 • 3
 RAL 6011 49/52820 • 3	 RAL 6028 49/52650 • 3	 RAL 7012 49/71180 • 3	 RAL 7035 49/73510 • 3	 RAL 8002 49/66150 • 3	 RAL 8028 49/66500 • 3
 RAL 6012 49/51540 • 3	 RAL 6029 49/52640 • 300	 RAL 7013 49/72550 • 3	 RAL 7036 49/72950 • 3	 RAL 8003 49/66140 • 3	 RAL 9001 49/10016 • 3
 RAL 6013 49/52810 • 3	 RAL 6032 49/52630 • 300	 RAL 7015 49/72820 • 3	 RAL 7037 49/72480 • 37	 RAL 8004 49/66130 • 3	 RAL 9002 49/70520 • 300
 RAL 6014 49/52800	 RAL 6033 49/55010 • 3	 RAL 7016 49/72830 • 3	 RAL 7038 49/72470 • 300	 RAL 8007 49/66120 • 3	 RAL 9003 49/11400 • 300
 RAL 6015 49/52790	 RAL 6034 49/55020 • 300	 RAL 7021 49/72540 • 3	 RAL 7039 49/71020 • 300	 RAL 8008 49/66110 • 3	 RAL 9004 49/81950 • 300
 RAL 6016 49/51020 • 3	 RAL 7000 49/72700 • 300	 RAL 7022 49/72850 • 300	 RAL 7040 49/75470 • 3	 RAL 8011 49/66100 • 3	 RAL 9005 49/82830 • 3000
 RAL 6017 49/52780 • 3	 RAL 7001 49/72710	 RAL 7023 49/72530 • 300	 RAL 7042 49/73250 • 300	 RAL 8012 49/66090 • 3	 RAL 9010 49/11500 • 3
 RAL 6018 49/52720 • 3	 RAL 7002 49/72720 • 37	 RAL 7024 49/72870 • 300	 RAL 7043 49/72460 • 300	 RAL 8014 49/65230 • 3	 RAL 9011 49/80540
 RAL 6019 49/51000 • 3	 RAL 7003 49/72600	 RAL 7026 49/72880 • 300	 RAL 7044 49/75480 • 300	 RAL 805 49/63040	 RAL 9016 49/11340 • 3
 RAL 6020 49/52710 • 3	 RAL 7004 49/73300 • 300			 RAL 8016 49/66080 • 3	 RAL 9017 49/80550 • 37
 RAL 6021 49/52700 • 3	 RAL 7005 49/72590 • 3			 RAL 8017 49/65220 • 3	 RAL 9018 49/72490 • 300

# Solid Surface Choices

---

Here are the group categories for Solid Surface Colors supplied by SHOPCO:

- Group A - Lower Price Level
- Group B - Lower/Mid Price Level
- Group C - Mid Price Level
- Group D - Upper Price Level

The below Solid Surface Colors are maintained in inventory at SHOPCO's warehouse.

Note: Other Manufacturers and Colors can be supplied by SHOPCO, however the above groups are the colors most commonly used and readily available from the Manufacturer.

Benefits of these choices:

- Quality of inventory choices
- Because these are inventoried; product cost is lower, its readily available, and expedites the fabrication process for counter tops

GROUP A



HI-MACS MOONSCAPE QUARTZ

GROUP B



HI-MACS STORM GRANITE

GROUP B



HI-MACS GRAPHITE GRANITE

GROUP C



LIVINGSTONE SEDONA

For more information about the attached colors in the presentation, feel free to utilize the following site: [www.lghausyusa.com/hi-macs/index.do](http://www.lghausyusa.com/hi-macs/index.do).

# Solid Surface Choices

---

## SOLID SURFACE - HI-MACS GROUP A



\* SOME COLORS EXHIBIT INCREASED MOVEMENT AND VARIATION OF COLOR AND PATTERN WHICH CANNOT BE FULLY RECOGNIZED ON SOME SAMPLES.

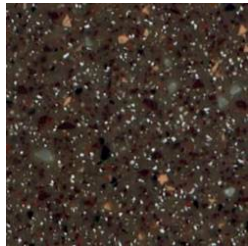
\* SOME COLORS CONTAIN LINEAR PATTERNS THAT CANNOT BE FULLY RECOGNIZED ON SOME SAMPLES. THE LINEAR PATTERN MAY VARY BY EACH PRODUCT.

\* SOME COLORS ARE TRANSLUCENT AND PROVIDES A SENSUOUS LOOK WHEN COMBINED WITH LIGHT SOURCES.

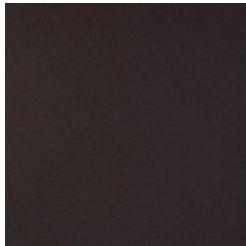
# Solid Surface Choices

---

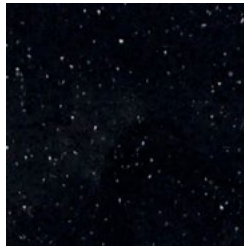
## SOLID SURFACE - HI-MACS GROUP B



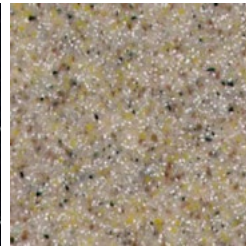
ALLSPICE QUARTZ



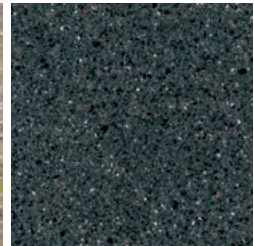
ARMADILLO



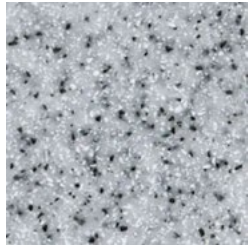
BLACK PEARL



DESERT SAND



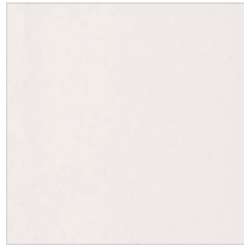
GRAPHITE GRANITE



GRAY SAND



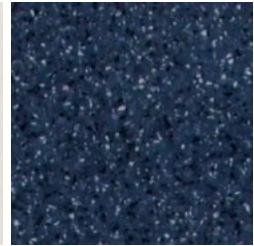
HARVEST



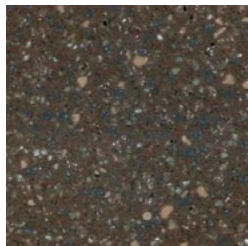
LUNAR SAND



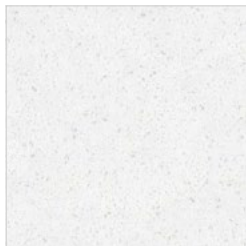
MERINO



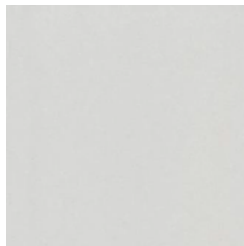
MIDNIGHT PEARL



MOCHA GRANITE



MOONDUST



PEBBLE PEARL



SEA OAT QUARTZ



STORM GRANITE



TAPIOCA PEARL



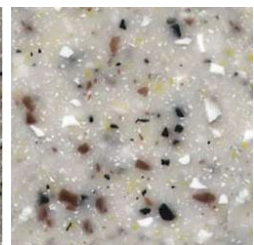
TRAIL GRAY



VANILLA SUGAR



VENETIAN SAND



WHITE GRANITE

\* SOME COLORS EXHIBIT INCREASED MOVEMENT AND VARIATION OF COLOR AND PATTERN WHICH CANNOT BE FULLY RECOGNIZED ON SOME SAMPLES.

\* SOME COLORS CONTAIN LINEAR PATTERNS THAT CANNOT BE FULLY RECOGNIZED ON SOME SAMPLES. THE LINEAR PATTERN MAY VARY BY EACH PRODUCT.

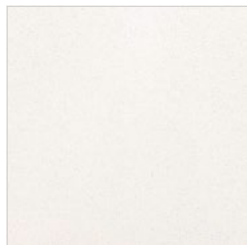
\* SOME COLORS ARE TRANSLUCENT AND PROVIDES A SENSUOUS LOOK WHEN COMBINED WITH LIGHT SOURCES.



# Solid Surface Choices

---

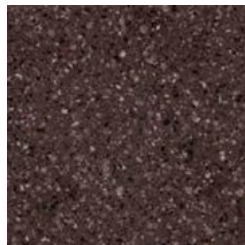
## SOLID SURFACE - HI-MACS GROUP C



ALABASTER



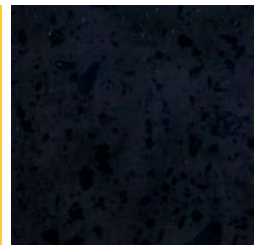
ARCTIC GRANITE



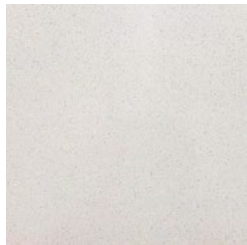
BAMBOO LEAF



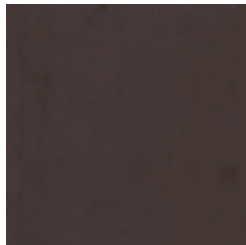
BANANA



BLACK GRANITE



COBBLESTONE



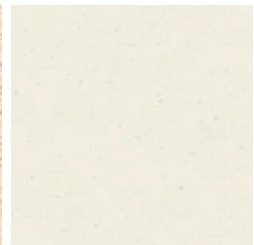
COFFEE BROWN



CONCRETE GREY



COSWAL



CRYSTAL BEIGE



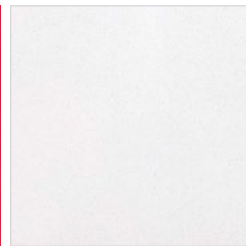
DIAMOND DUST



EGG WHITE



FIERY RED



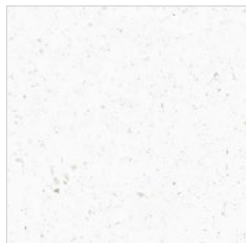
FROSTINE



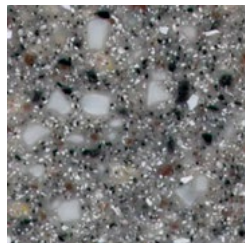
GEYSER



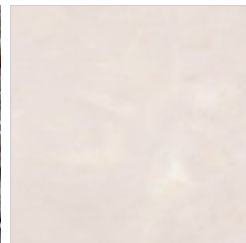
GLACIAL



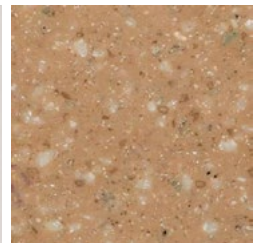
GLITZ



GRAY GRANITE



HAZE



HONEYSUCKLE

\* SOME COLORS EXHIBIT INCREASED MOVEMENT AND VARIATION OF COLOR AND PATTERN WHICH CANNOT BE FULLY RECOGNIZED ON SOME SAMPLES.

\* SOME COLORS CONTAIN LINEAR PATTERNS THAT CANNOT BE FULLY RECOGNIZED ON SOME SAMPLES. THE LINEAR PATTERN MAY VARY BY EACH PRODUCT.

\* SOME COLORS ARE TRANSLUCENT AND PROVIDES A SENSUOUS LOOK WHEN COMBINED WITH LIGHT SOURCES.

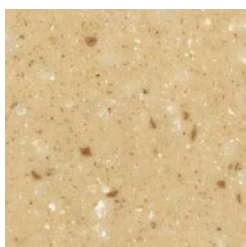
# Solid Surface Choices

---

## SOLID SURFACE - HI-MACS GROUP C



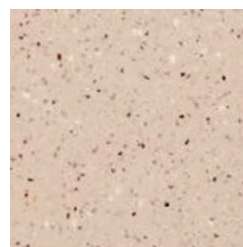
KAMET



LEMONGRASS



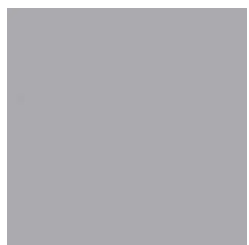
LUSTER



MACCHIATO



MAPLE MEADOW



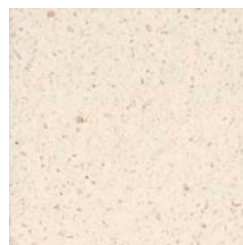
MARTA GRAY



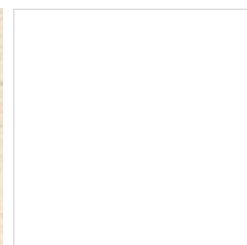
MAUI QUARTZ



MESA GRANITE



MOON HAZE



OPAL



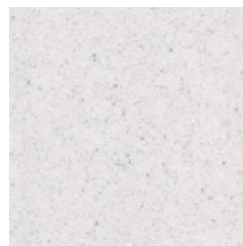
PAUSE



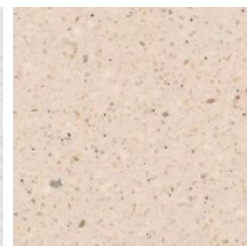
POPULUS



PORTLAND



RIPE COTTON



SIMPLICITY

\* SOME COLORS EXHIBIT INCREASED MOVEMENT AND VARIATION OF COLOR AND PATTERN WHICH CANNOT BE FULLY RECOGNIZED ON SOME SAMPLES.

\* SOME COLORS CONTAIN LINEAR PATTERNS THAT CANNOT BE FULLY RECOGNIZED ON SOME SAMPLES. THE LINEAR PATTERN MAY VARY BY EACH PRODUCT.

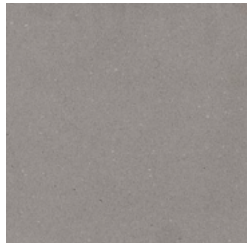
\* SOME COLORS ARE TRANSLUCENT AND PROVIDES A SENSUOUS LOOK WHEN COMBINED WITH LIGHT SOURCES.



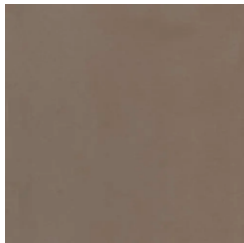
# Solid Surface Choices

---

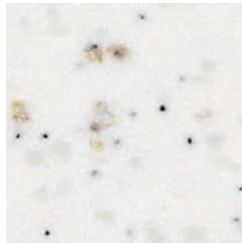
## SOLID SURFACE - HI-MACS GROUP C



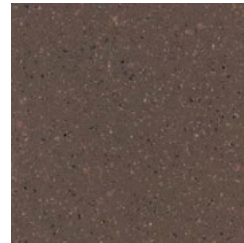
STEEL CONCRETE



TOFFEE BROWN



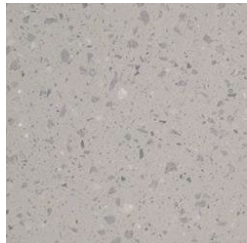
TUNDRA QUARTZ



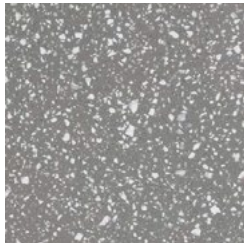
UMBER GRANITE



URBAN CONCRETE



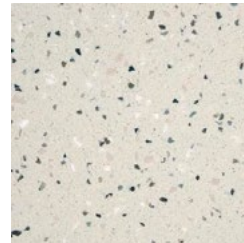
TERRAZZO LUNA



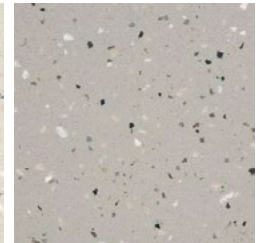
TERRAZZO GRIGIO



TERRAZZO MODERNA



TERRAZZO CLASSICO



TERRAZZO VENATO

\* SOME COLORS EXHIBIT INCREASED MOVEMENT AND VARIATION OF COLOR AND PATTERN WHICH CANNOT BE FULLY RECOGNIZED ON SOME SAMPLES.

\* SOME COLORS CONTAIN LINEAR PATTERNS THAT CANNOT BE FULLY RECOGNIZED ON SOME SAMPLES. THE LINEAR PATTERN MAY VARY BY EACH PRODUCT.

\* SOME COLORS ARE TRANSLUCENT AND PROVIDES A SENSUOUS LOOK WHEN COMBINED WITH LIGHT SOURCES.

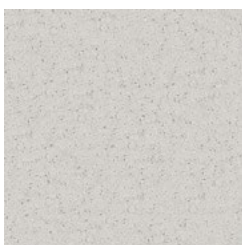
# Solid Surface Choices

---

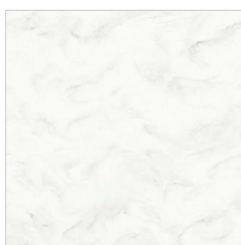
## SOLID SURFACE - HI-MACS GROUP D



ANDROMEDA



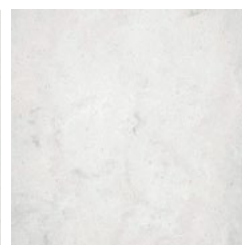
ARCAS



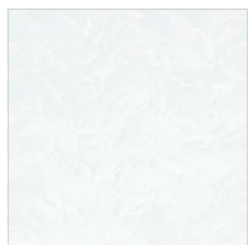
AURORA BLANC



AURORA CREAM



AURORA GRAY



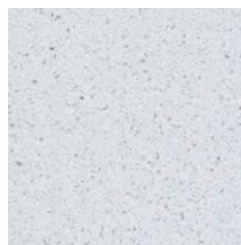
AURORA PAVIA



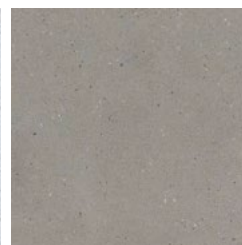
AURORA SANREMO



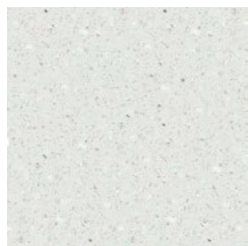
BIRCH BARK NR



CARINA



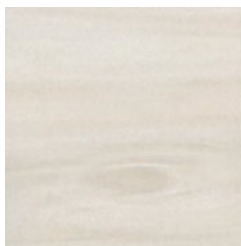
CHIC CONCRETE



CLOUD



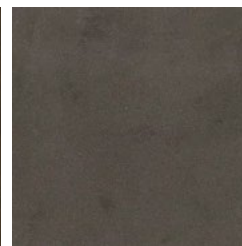
COSMOS



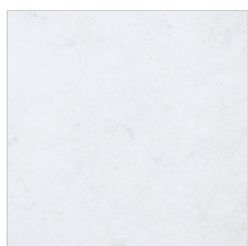
CREAM OAK



DARK WALNUT



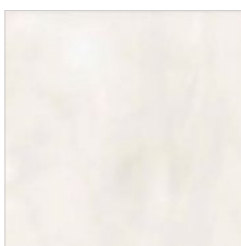
EBONY CONCRETE



EDESSA



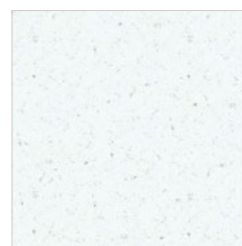
FERRARA



GENOVA



GRAY TEAK



ICE QUEEN

\* SOME COLORS EXHIBIT INCREASED MOVEMENT AND VARIATION OF COLOR AND PATTERN WHICH CANNOT BE FULLY RECOGNIZED ON SOME SAMPLES.

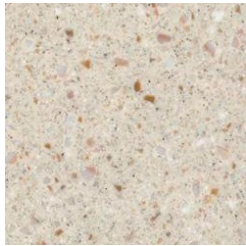
\* SOME COLORS CONTAIN LINEAR PATTERNS THAT CANNOT BE FULLY RECOGNIZED ON SOME SAMPLES. THE LINEAR PATTERN MAY VARY BY EACH PRODUCT.

\* SOME COLORS ARE TRANSLUCENT AND PROVIDES A SENSUOUS LOOK WHEN COMBINED WITH LIGHT SOURCES.

# Solid Surface Choices

---

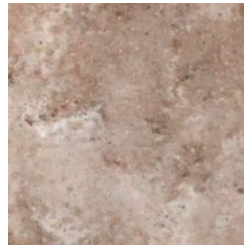
## SOLID SURFACE - HI-MACS GROUP D



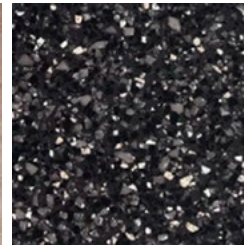
KALA CHANA



LAGO



LUCCA



MERAPI



MILKY WAY



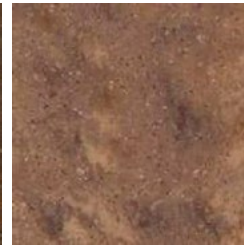
NAPLES



NOBLE CANE



PARMA



PISA



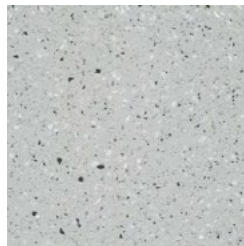
PLUTO



SATURN



SHADOW CONCRETE



SHADOW QUEEN



SHASTA



STRATO CLOUD

\* SOME COLORS EXHIBIT INCREASED MOVEMENT AND VARIATION OF COLOR AND PATTERN WHICH CANNOT BE FULLY RECOGNIZED ON SOME SAMPLES.

\* SOME COLORS CONTAIN LINEAR PATTERNS THAT CANNOT BE FULLY RECOGNIZED ON SOME SAMPLES. THE LINEAR PATTERN MAY VARY BY EACH PRODUCT.

\* SOME COLORS ARE TRANSLUCENT AND PROVIDES A SENSUOUS LOOK WHEN COMBINED WITH LIGHT SOURCES.

# Solid Surface Choices

---

## SOLID SURFACE - HI-MACS GROUP D



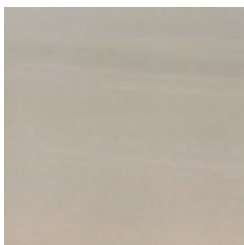
STRATO CREME



STRATO SAND



STRATO SLATE



STRATO TERRA



STRATO WIND



SUGAR MAPLE NR



TAMBORA



TERNI



VATHI



VENUS



VOLCANIC ICE

\* SOME COLORS EXHIBIT INCREASED MOVEMENT AND VARIATION OF COLOR AND PATTERN WHICH CANNOT BE FULLY RECOGNIZED ON SOME SAMPLES.

\* SOME COLORS CONTAIN LINEAR PATTERNS THAT CANNOT BE FULLY RECOGNIZED ON SOME SAMPLES. THE LINEAR PATTERN MAY VARY BY EACH PRODUCT.

\* SOME COLORS ARE TRANSLUCENT AND PROVIDES A SENSUOUS LOOK WHEN COMBINED WITH LIGHT SOURCES.

# Solid Surface Choices

---

## LOOKING FOR SOMETHING ELSE?

Didn't find the Solid Surface choice you were looking for? No problem. SHOPCO is direct with multiple Solid Surface manufacturers with many colors and styles to choose from. Please review the following websites below for the product of your choice!

- LG Hi-Macs: [www.lghausysusa.com/hi-macs/index.do](http://www.lghausysusa.com/hi-macs/index.do)
- Wilsonart: [www.wilsonart.com/solid-surfaces](http://www.wilsonart.com/solid-surfaces)
- Corian: [www.corian.com](http://www.corian.com)
- Samsung/Staron: [www.jvlsss.com/samsung-staron](http://www.jvlsss.com/samsung-staron)
- Basix: [www.basixsurfaces.com/basix-solid-surface](http://www.basixsurfaces.com/basix-solid-surface)
- Livingstone: [www.livingstonesurfaces.com](http://www.livingstonesurfaces.com)
- Meganite: [www.meganite.com/colors](http://www.meganite.com/colors)
- Avonite: [www.aristechsurfaces.com/avonite?lang=en](http://www.aristechsurfaces.com/avonite?lang=en)
- Bellavati: [www.wehausa.com/category-s/2561.htm](http://www.wehausa.com/category-s/2561.htm)
- Durasein: [www.durasein.com/surfaces](http://www.durasein.com/surfaces)



# Laminate Choices

---



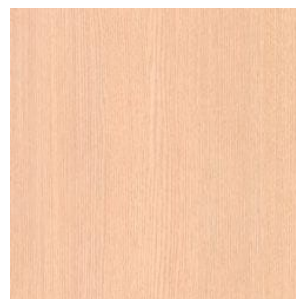
TRANQUILITY



SIMPLICITY



NATURAL BAMBOO



STRAIGHTAWAY OAK



CLEAR MAPLE



VERMONT MAPLE



CHAI



BEIGE RENAISSANCE



FINE SYCAMORE



CALUNA CHERRY



GOLDEN ANIGRE



SCANDIA MAPLE



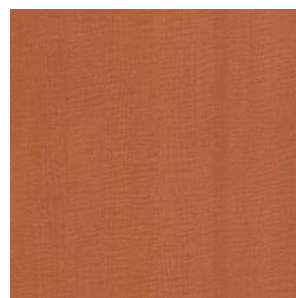
SIREN MAPLE



GOLDEN ASH



GRAND ISLE MAPLE



CARMEL SAGAWOOD

# Laminate Choices

---



GENTRY OAK



ANTOCCINO



WEATHERED STORM



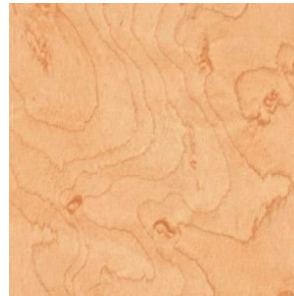
RECON OAK



KINDRED SPIRIT



SUNBEAM



HONEY MAPLE



ILLUSTRIOUS MAPLE



SHIBUI WOODPRINT



MEDITATION ELM



PLANETREE MAPLE



DRAGONFLY



LUMINARY TEAK



LEGENDARY TEAK



ZULU



CARAJILLO

# Laminate Choices

---



ICONIC MAPLE



BAILEY



MODERN EDGE



RUGGED TRAIL



OUTER LIMITS



WHISPERING WIND



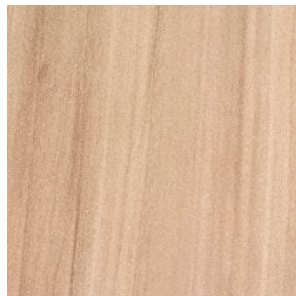
TOPAZ KHAYAWOOD



GIANT GRAY BAMBOO



BREVE



DRY CREEK PLUM TREE



AMBER PEARWOOD



CUTTING EDGE



MAZAGRAN



RUSTIC QUARTERED OAK



MACCHIATO



TANGIER ANIGRE



# Laminate Choices

---



BLOSSOM CHERRY



COGNAC BIRDSEYE



TAWNY SATINWOOD



VANTAGE POINT WALNUT



VENERABLE OLD OAK



SHEFFIELD CHERRY



VALENCIA TEAK



PALAZZO



TENDU



BABBLING BROOK



BOHEMIAN EDGE



GALAO



BRAVE SPIRIT



KOA PEELING



MAROCCHINO



EDENWOOD

# Laminate Choices

---



GLISTENING TRAIL



STOUT WALNUT



UNTOLD JOURNEY



ROARING WIND



SANTA ROSA PLUM TREE



CARMEL MACCHIATO



KONA BLEND



ENDLESS JOURNEY



VALET AVAILABLE



MID-MOD WALNUT



MIESIAN



XANADU BLUE BAMBOO



EXTREME GREEN BAMBOO



KENTUCKY KRAFTWOOD



VALIDATE WE DO



KENDO



# Laminate Choices

---



WASHINGTON APPLE



MIKADO WOODPRINT



SOVEREIGN CHERRY



CROWN CHERRY



ROYAL MAHOGANY



GALLOWAY BURL



CREST MAHOGANY



RED DRAGON BAMBOO



REGENCY MAHOGANY

# Laminate Choices

---

## LOOKING FOR SOMETHING ELSE?

Didn't find the Solid Surface choice you were looking for? No problem. SHOPCO is direct with multiple Solid Surface manufacturers with many colors and styles to choose from. Please review the following websites below for the product of your choice!

Didn't find the Laminate choice you were looking for? No problem. SHOPCO is direct with multiple Laminate manufacturers with many colors and styles to choose from. Please review the following websites below for the product of your choice!

- Wilsonart: [www.wilsonart.com/laminate](http://www.wilsonart.com/laminate)
- Formica: [www.formica.com/en-us/products/lamhome/colors](http://www.formica.com/en-us/products/lamhome/colors)
- Nevamar/Pionite/Panolam: [www.panolam.com/pionite](http://www.panolam.com/pionite)



**With Over 400 Years of Experience,  
Our Team is Ready to Serve You!**





**DISCOVER THE  
SHOPCO DIFFERENCE!**

**SHOPCO USA**

7171 W. Sam Houston Parkway North  
Houston, TX 77040

**PHONE: 713.934.2900 | FAX: 713.934.2929**

Copyright © 2021 SHOPCO USA Inc. All rights reserved.

**SHOPCOUSA.COM**